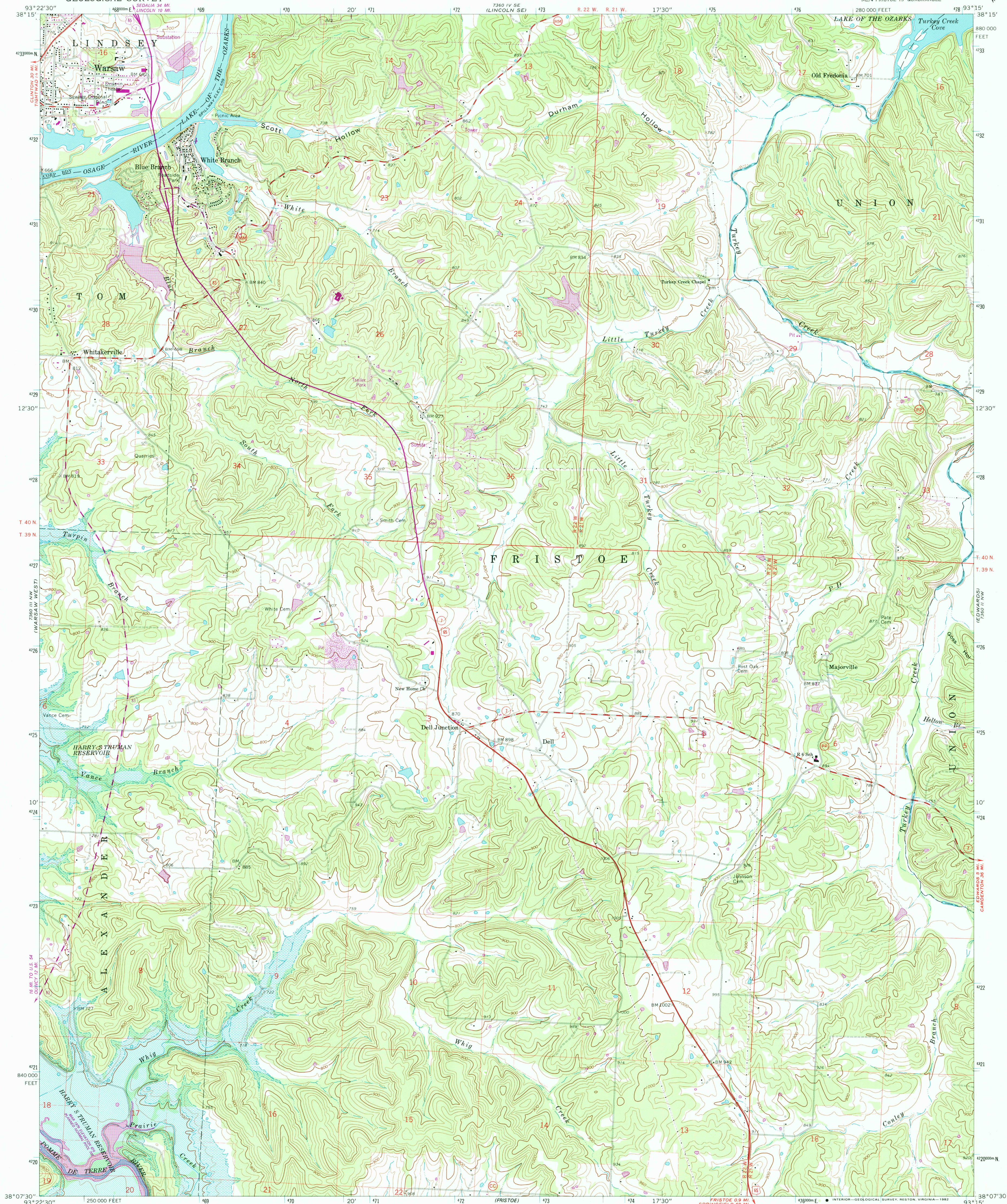


UNITED STATES  
DEPARTMENT OF THE INTERIOR  
GEOLOGICAL SURVEY

WARSAW EAST QUADRANGLE  
MISSOURI-BENTON CO.  
7.5 MINUTE SERIES (TOPOGRAPHIC)  
NE/4 FRISTOE 15' QUADRANGLE



Mapped, edited, and published by the Geological Survey

Control by USGS and USC&GS

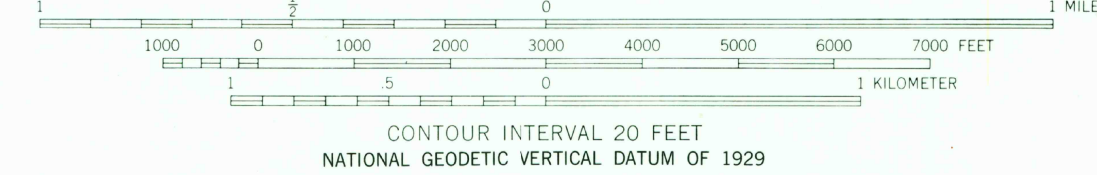
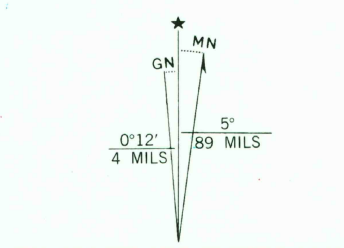
Topography by photogrammetric methods from aerial  
photographs taken 1963. Field checked 1964

Polyconic projection. 1927 North American Datum  
10,000-foot grid based on Missouri coordinate system, central zone  
1000-meter Universal Transverse Mercator grid ticks,  
zone 15, shown in blue

Blue hatching indicates areas to be submerged by Harry S. Truman  
Reservoir. Areas covered by dashed light-blue pattern  
are subject to controlled inundation

To place on the predicted North American Datum 1983  
move the projection lines 1 meter south and  
17 meters east as shown by dashed corner ticks

Revisions shown in purple compiled from aerial photographs taken 1979-80  
and other sources. This information not field checked. Map edited 1982



THIS MAP COMPLIES WITH NATIONAL MAP ACCURACY STANDARDS  
FOR SALE BY U. S. GEOLOGICAL SURVEY, DENVER, COLORADO 80225, OR RESTON, VIRGINIA 22092,  
AND THE DIVISION OF GEOLOGY AND LAND SURVEY,  
MISSOURI DEPARTMENT OF NATURAL RESOURCES, ROLLA, MISSOURI 65401  
A FOLDER DESCRIBING TOPOGRAPHIC MAPS AND SYMBOLS IS AVAILABLE ON REQUEST



QUADRANGLE LOCATION

ROAD CLASSIFICATION	
Heavy-duty	Light-duty
Medium-duty	Unimproved dirt
U. S. Route	State Route

WARSAW EAST, MO.  
NE/4 FRISTOE 15' QUADRANGLE  
N3807.5-W9315.7.5

RETURN TO:  
USGS NMD HISTORICAL MAP ARCHIVES

1964  
PHOTOREVISED 1982  
DMA 7360 III NE-SERIES V879

JUL 30 1982  
(EDWARDS) 7360 III NW