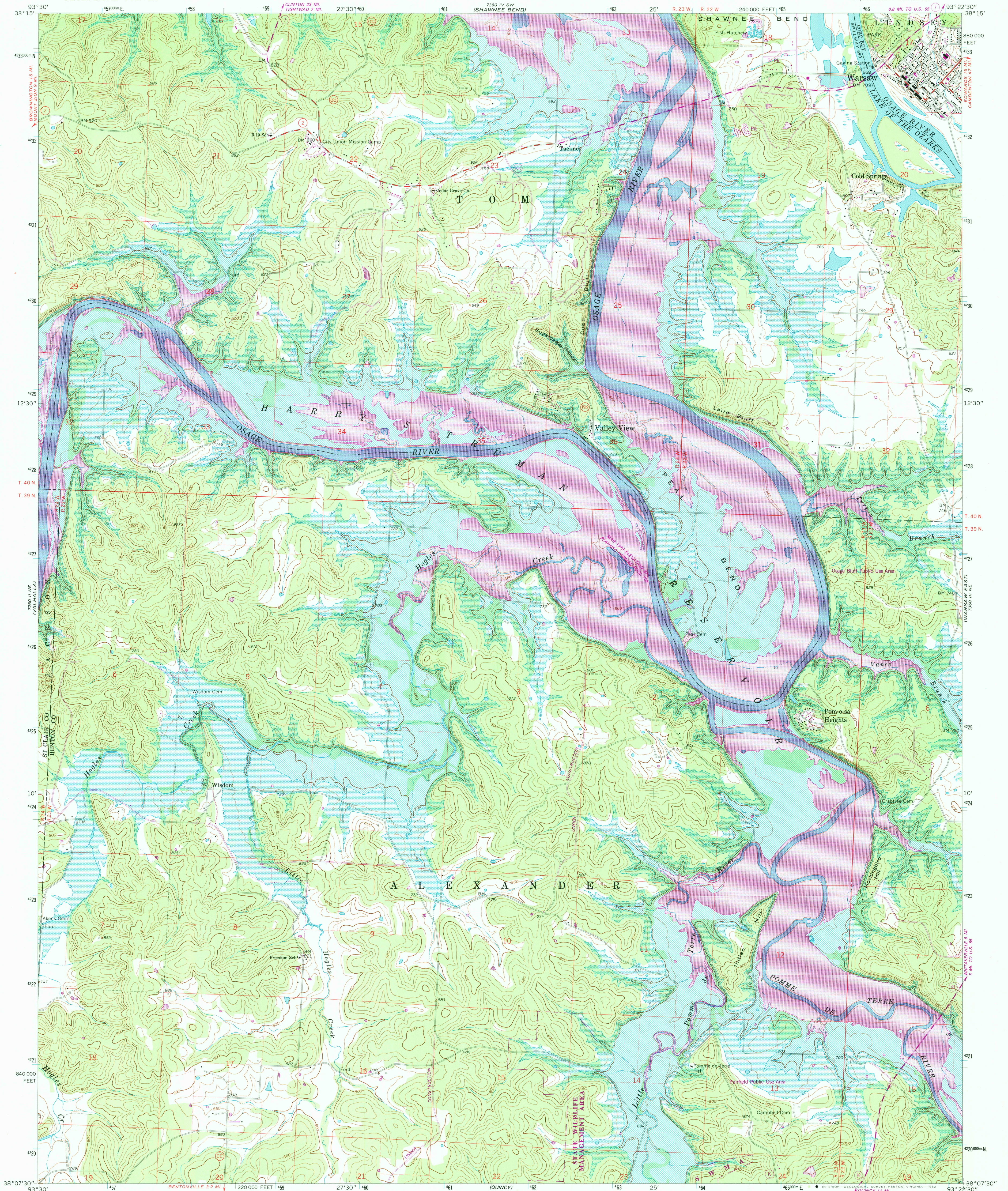


UNITED STATES
DEPARTMENT OF THE INTERIOR
GEOLOGICAL SURVEY

WARSAW WEST QUADRANGLE
MISSOURI
7.5 MINUTE SERIES (TOPOGRAPHIC)
NW/4 FRISTOE 15' QUADRANGLE



Mapped, edited, and published by the Geological Survey

Control by USGS and USC&GS

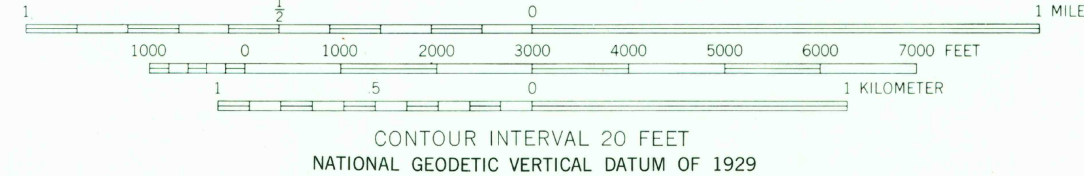
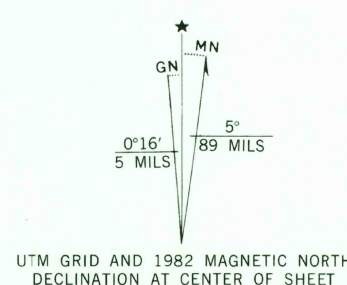
Topography by photogrammetric methods from aerial
photographs taken 1963. Field checked 1965

Polyconic projection. 1927 North American Datum
10,000-foot grid based on Missouri coordinate system, central zone
1000-meter Universal Transverse Mercator grid ticks,
zone 15, shown in blue

Blue hatching indicates areas to be submerged by Harry S. Truman
Reservoir. Areas covered by dashed light-blue pattern
are subject to controlled inundation

To place on the predicted North American Datum 1983
move the projection lines 17 meters east as shown by
dashed corner ticks

There may be private inholdings within the boundaries of
the National or State reservations shown on this map



THIS MAP COMPLIES WITH NATIONAL MAP ACCURACY STANDARDS
FOR SALE BY U.S. GEOLOGICAL SURVEY, DENVER, COLORADO 80225, OR RESTON, VIRGINIA 22092,
AND THE DIVISION OF GEOLOGY AND LAND SURVEY
MISSOURI DEPARTMENT OF NATURAL RESOURCES, ROLLA, MISSOURI 65401
A FOLDER DESCRIBING TOPOGRAPHIC MAPS AND SYMBOLS IS AVAILABLE ON REQUEST



Revisions shown in purple compiled from aerial
photographs taken 1979-80 and other sources
This information not field checked. Map edited 1982

ROAD CLASSIFICATION
Heavy-duty ——— Light-duty ———
Medium-duty ——— Unimproved dirt ———
State Route ———

RETURN TO
USGS AND HISTORICAL MAP ARCHIVES

WARSAW WEST, MO.
NW/4 FRISTOE 15' QUADRANGLE
N3807.5-W9322.5/7.5

1965
PHOTOREVISED 1982
DMA 7360 III NW-SERIES V879

JUL 30 1982

2150