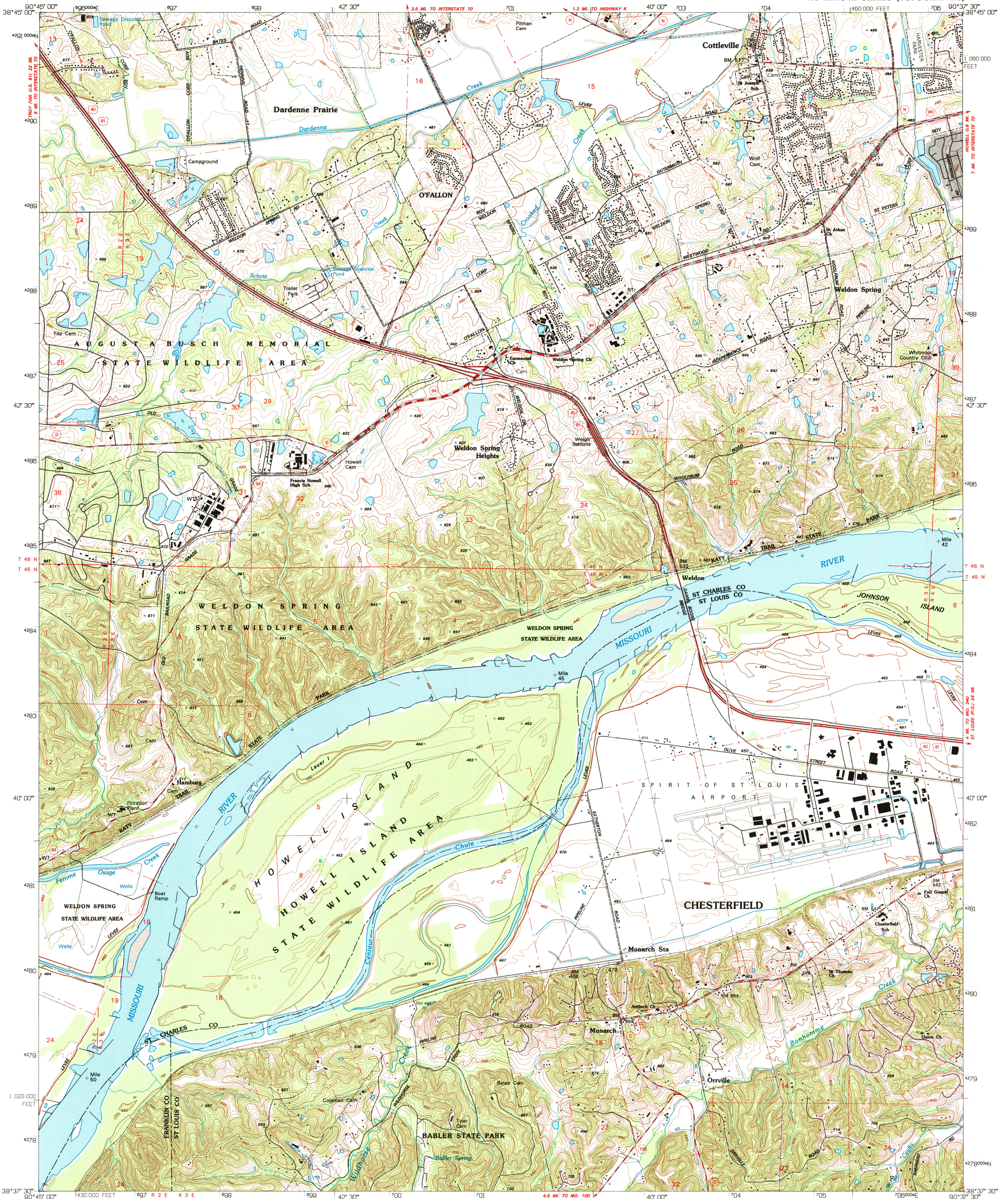


UNITED STATES
DEPARTMENT OF THE INTERIOR
GEOLOGICAL SURVEY

WELDON SPRING QUADRANGLE
MISSOURI
7.5 MINUTE SERIES (TOPOGRAPHIC)



Produced by the United States Geological Survey
Control by USGS, NOS/NOAA
Topography by photogrammetric methods from aerial photographs
taken 1952. Field checked 1954. Revised from aerial photographs
taken 1990. Field checked 1995. Map edited 1994
Universal Transverse Mercator projection
Missouri coordinate system, east zone
1000-meter Universal Transverse Mercator grid ticks, zone 15, shown in blue
1927 North American Datum (NAD 27)
North American Datum of 1983 (NAD 83) is shown by dashed corner ticks
The values of the shift between NAD 27 and NAD 83 for 7.5-minute
intersections are given in USGS Bulletin 1875
There may be private inholdings within the boundaries of the
National or State reservations shown on this map
Gray tint indicates areas in which only landmark buildings are shown

UTM GRID AND 1994 MAGNETIC NORTH
DECLINATION AT CENTER OF SHEET

SCALE 1:24000
CONTOUR INTERVAL 10 FEET
NATIONAL GEODETIC VERTICAL DATUM OF 1929

COMPLIES WITH U.S. GEOLOGICAL SURVEY STANDARDS FOR SPATIAL ACCURACY - CLASS 2
FOR SALE BY U.S. GEOLOGICAL SURVEY DENVER, COLORADO 80225, OR RESTON, VIRGINIA 22092
AND DIVISION OF GEOLOGY AND LAND SURVEY
MISSOURI DEPARTMENT OF NATURAL RESOURCES, ROLLA, MISSOURI 65401
A FOLDER DESCRIBING TOPOGRAPHIC MAPS AND SYMBOLS IS AVAILABLE ON REQUEST

QUADRANGLE LOCATION

1	2	3
4	5	6
7	8	9

ADJOINING 7.5' QUADRANGLE NAMES

ROAD CLASSIFICATION

Primary highway
hard surface
Secondary highway
hard surface
Unimproved road

Light-duty road, hard or
improved surface
Unimproved road

Interstate Route U.S. Route State Route

WELDON SPRING, MO.
38090-F6-TF-024
1994

USGS HISTORICAL
MAP ARCHIVES
JUN 15 1995
REC'D FILE COPY

DMA 7861 II NW - SERIES V879