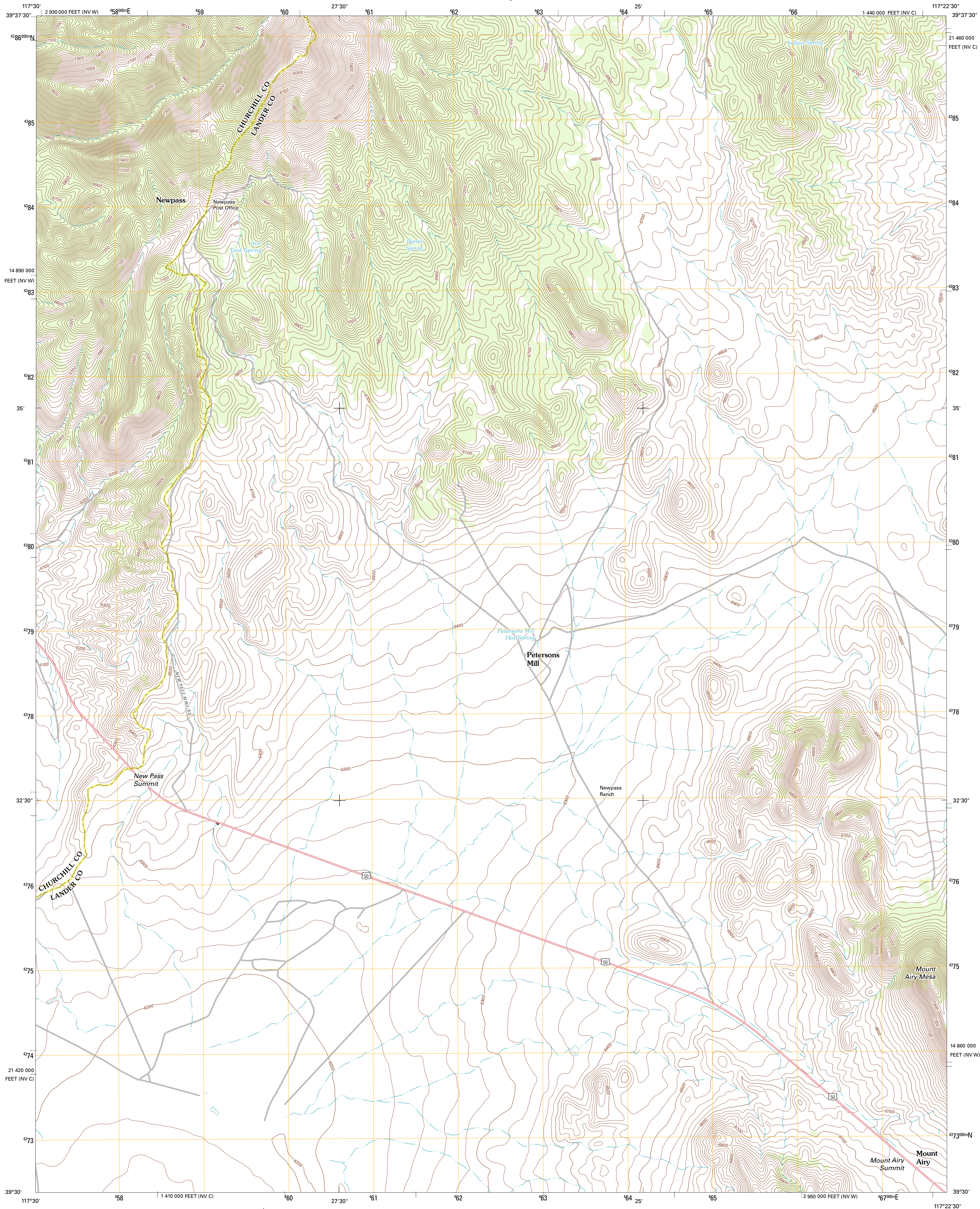




U.S. DEPARTMENT OF THE INTERIOR
U. S. GEOLOGICAL SURVEY



MOUNT AIRY QUADRANGLE
NEVADA
7.5-MINUTE SERIES



Produced by the United States Geological Survey
North American Datum of 1983 (NAD83)
World Geodetic System of 1984 (WGS84) Projection and
1 000-meter grid: Universal Transverse Mercator, Zone 11S
10 000-foot ticks: Nevada Coordinate System of 1983
(central and west zones)

Imagery.....NAIP, June 2010
Roads.....©2006-2011 TomTom
Names.....GNIS, 2011
Hydrography.....National Hydrography Dataset, 2010
Contours.....National Elevation Dataset, 1999
Boundaries.....Census, IBWC, USGS, 1972 - 2010

UTM GRID AND 2011 MAGNETIC NORTH
DECLINATION AT CENTER OF SHEET

U.S. National Grid
100 000m Square ID
MD
Grid Zone Designation
11S

SCALE 1:24 000

1 000 0 500 0 500 1000 2000
KILOMETERS
1 000 0 1000 2000 3000 4000 5000 6000 7000 8000 9000 10000
METERS
1 000 0 1000 2000 3000 4000 5000 6000 7000 8000 9000 10000
FEET

CONTOUR INTERVAL 20 FEET
NORTH AMERICAN VERTICAL DATUM OF 1988

This map was produced to conform with the
National Geospatial Program US Topo Product Standard, 2011.
A metadata file associated with this product is draft version 0.6.1

NEVADA

QUADRANGLE LOCATION

New Pass Well	New Pass Peak	Mount Airy NE
New Pass	Mount Airy	Mount Airy Mesa
Carroll Summit NE	Emigrant Peak	Candolfo Canyon

ADJOINING 7.5' QUADRANGLES

ROAD CLASSIFICATION

Interstate Route
US Route
Ramp

State Route
Local Road
4WD

MOUNT AIRY, NV
2011