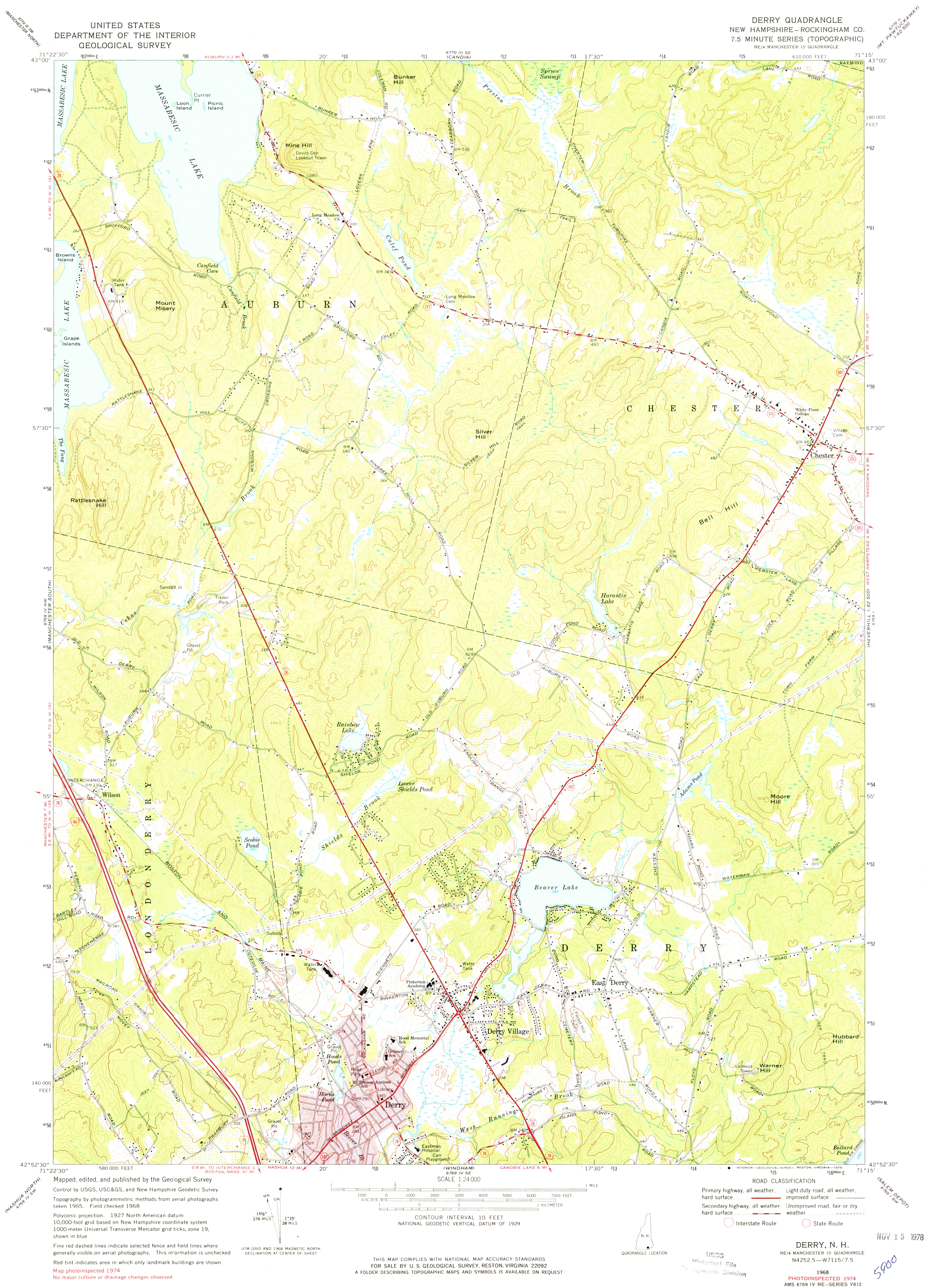
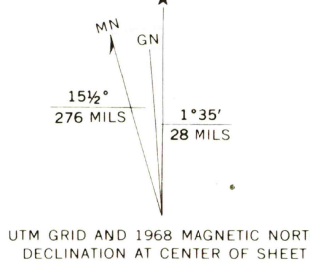


UNITED STATES
DEPARTMENT OF THE INTERIOR
GEOLOGICAL SURVEY

DERRY QUADRANGLE
NEW HAMPSHIRE—ROCKINGHAM CO.
7.5 MINUTE SERIES (TOPOGRAPHIC)
NE/4 MANCHESTER 15' QUADRANGLE



Mapped, edited, and published by the Geological Survey
Control by USGS, USC&GS, and New Hampshire Geodetic Survey
Topography by photogrammetric methods from aerial photographs
taken 1955. Field checked 1968
Polyconic projection. 1927 North American datum
10,000-foot grid based on New Hampshire coordinate system
1000-meter Universal Transverse Mercator grid ticks, zone 19,
shown in blue
Fine red dashed lines indicate selected fence and field lines where
generally visible on aerial photographs. This information is unchecked
Red tint indicates area in which only landmark buildings are shown
Map photoinspected 1974
No major culture or drainage changes observed



THIS MAP COMPLIES WITH NATIONAL MAP ACCURACY STANDARDS
FOR SALE BY U. S. GEOLOGICAL SURVEY, RESTON, VIRGINIA 22092
A FOLDER DESCRIBING TOPOGRAPHIC MAPS AND SYMBOLS IS AVAILABLE ON REQUEST

ROAD CLASSIFICATION
Primary highway, all weather, hard surface
Secondary highway, all weather, hard surface
Light duty road, all weather, improved surface
Unimproved road, fair or dry weather
Interstate Route
State Route

DERRY, N. H.
NE/4 MANCHESTER 15' QUADRANGLE
N4252.5—W7115/7.5
1968
PHOTOINSPECTED 1974
AMS 6769 IV NE—SERIES V812

NOV 15 1978

5900