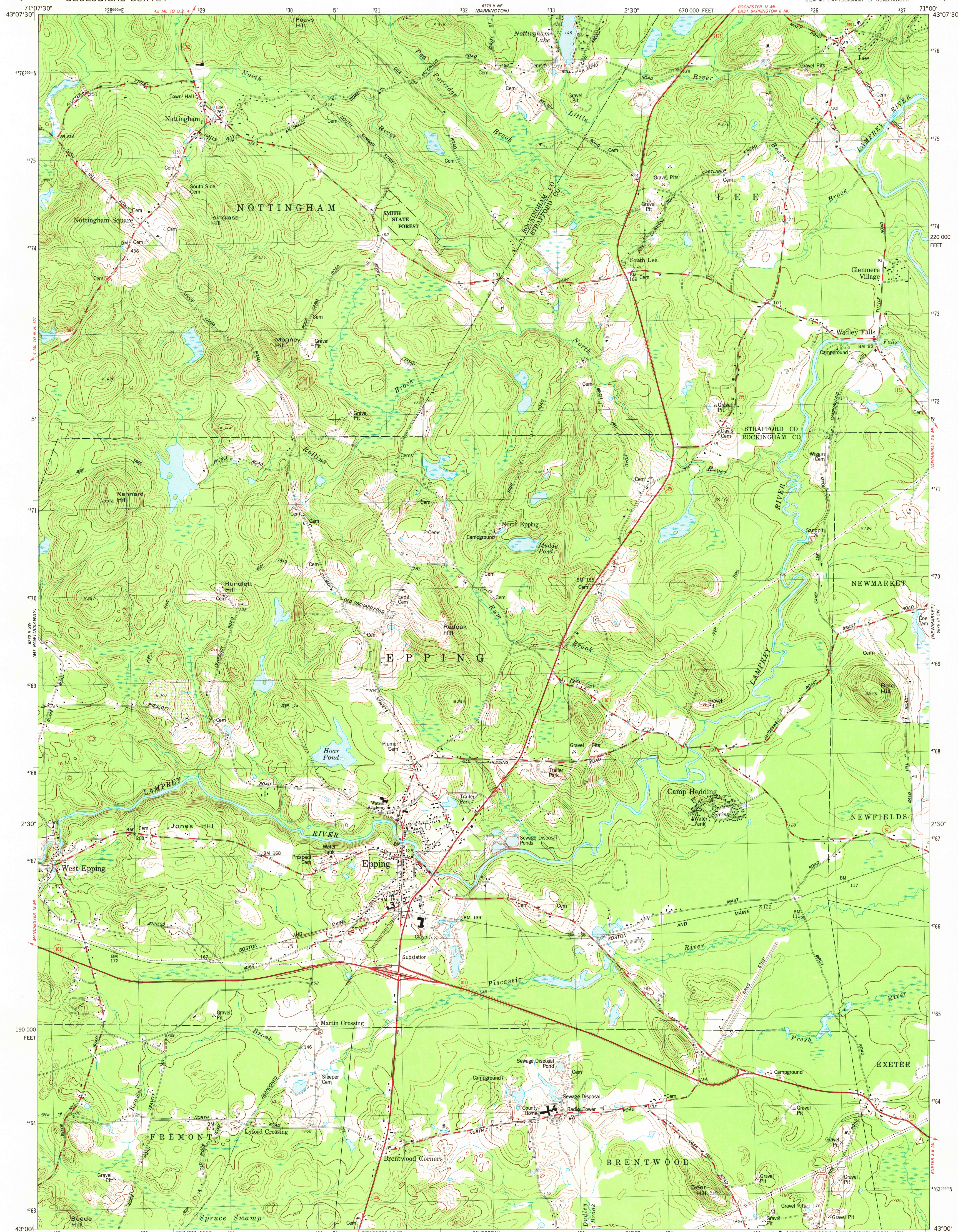
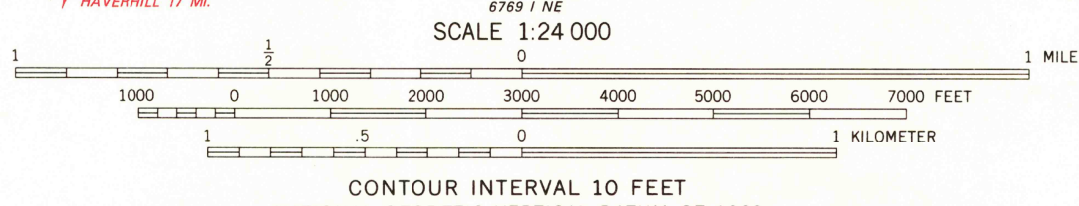
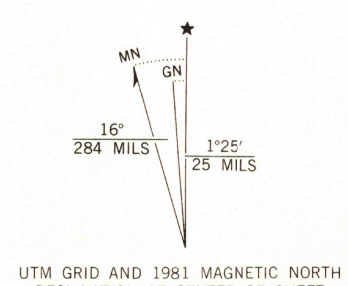


UNITED STATES
DEPARTMENT OF THE INTERIOR
GEOLOGICAL SURVEY

EPPING QUADRANGLE
NEW HAMPSHIRE
7.5 MINUTE SERIES (TOPOGRAPHIC)



Mapped, edited, and published by the Geological Survey
Control by USGS, NOS/NOAA, and New Hampshire Geodetic Survey
Topography by photogrammetric methods from aerial photographs
taken 1975. Field checked 1976. Map edited 1981
Projection and 10,000-foot grid ticks: New Hampshire coordinate
system (transverse Mercator)
1000-meter Universal Transverse Mercator grid, zone 19
1927 North American Datum
To place on the predicted North American Datum 1983
move the projection lines 6 meters south and
41 meters west as shown by dashed corner ticks
Fine red dashed lines indicate selected fence and field lines where
generally visible on aerial photographs. This information is unchecked
There may be private inholdings within the boundaries of
the National or State reservations shown on this map



THIS MAP COMPLIES WITH NATIONAL MAP ACCURACY STANDARDS
FOR SALE BY U. S. GEOLOGICAL SURVEY, RESTON, VIRGINIA 22092
A FOLDER DESCRIBING TOPOGRAPHIC MAPS AND SYMBOLS IS AVAILABLE ON REQUEST

ROAD CLASSIFICATION
Primary highway, hard surface
Secondary highway, hard surface
Light-duty road, hard or improved surface
Unimproved road
Interstate Route
U. S. Route
State Route

EPHING, N. H.
SE 1/4 MT PAWTUCKAWAY 15' QUADRANGLE
N4300-W7100/7.5

1981
DMA 6770 II SE-SERIES V812

DEC 17 1981

RETURN TO:
USGS AND HISTORICAL MAP ARCHIVES
1980