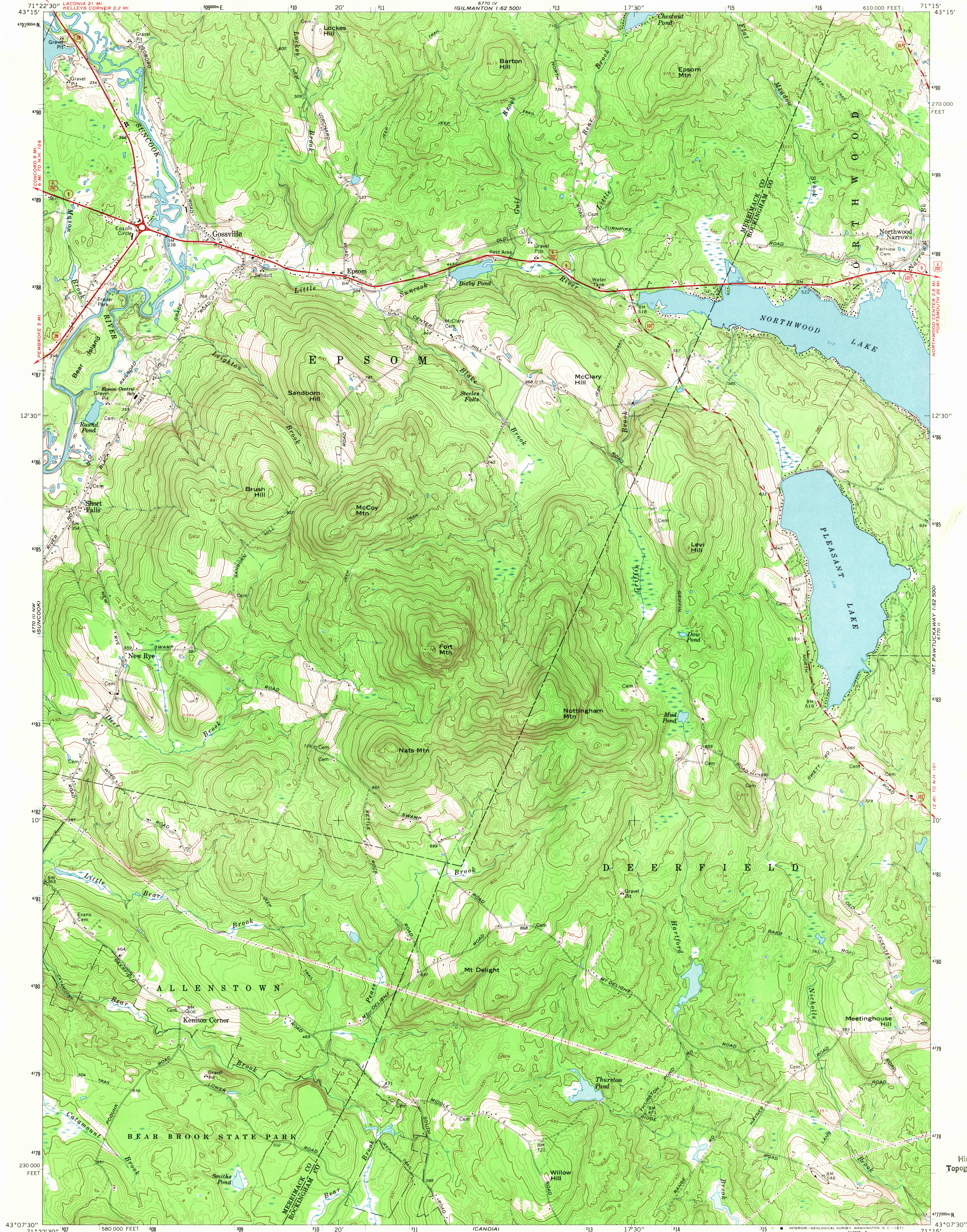
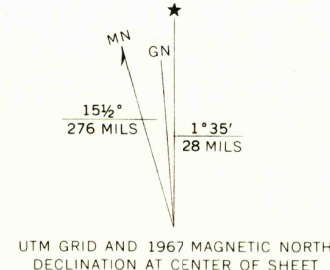


UNITED STATES  
DEPARTMENT OF THE INTERIOR  
GEOLOGICAL SURVEY

GOSSVILLE QUADRANGLE  
NEW HAMPSHIRE  
7.5 MINUTE SERIES (TOPOGRAPHIC)  
NE/4 SUNCOOK 15' QUADRANGLE  
610 000 FEET



Mapped, edited, and published by the Geological Survey  
Control by USGS, USC&GS, and New Hampshire Geodetic Survey  
Topography by photogrammetric methods from aerial  
photographs taken 1967. Field checked 1967  
Polyconic projection. 1927 North American datum  
10,000-foot grid based on New Hampshire coordinate system  
1000-meter Universal Transverse Mercator grid ticks,  
zone 19, shown in blue  
Fine red dashed lines indicate selected fence and field lines where  
generally visible on aerial photographs. This information is unchecked



THIS MAP COMPLIES WITH NATIONAL MAP ACCURACY STANDARDS  
FOR SALE BY U.S. GEOLOGICAL SURVEY, WASHINGTON, D.C. 20242  
A FOLDER DESCRIBING TOPOGRAPHIC MAPS AND SYMBOLS IS AVAILABLE ON REQUEST

ROAD CLASSIFICATION  
Primary highway, all weather, hard surface  
Secondary highway, all weather, hard surface  
Light-duty road, all weather, improved surface  
Unimproved road, fair or dry weather  
U.S. Route  
State Route

GOSSVILLE, N. H.  
NE/4 SUNCOOK 15' QUADRANGLE  
N4307.5-W7115/7.5

1967  
AMS 6770 III NE-SERIES V812

FILE COPY  
TOPOGRAPHIC DIVISION