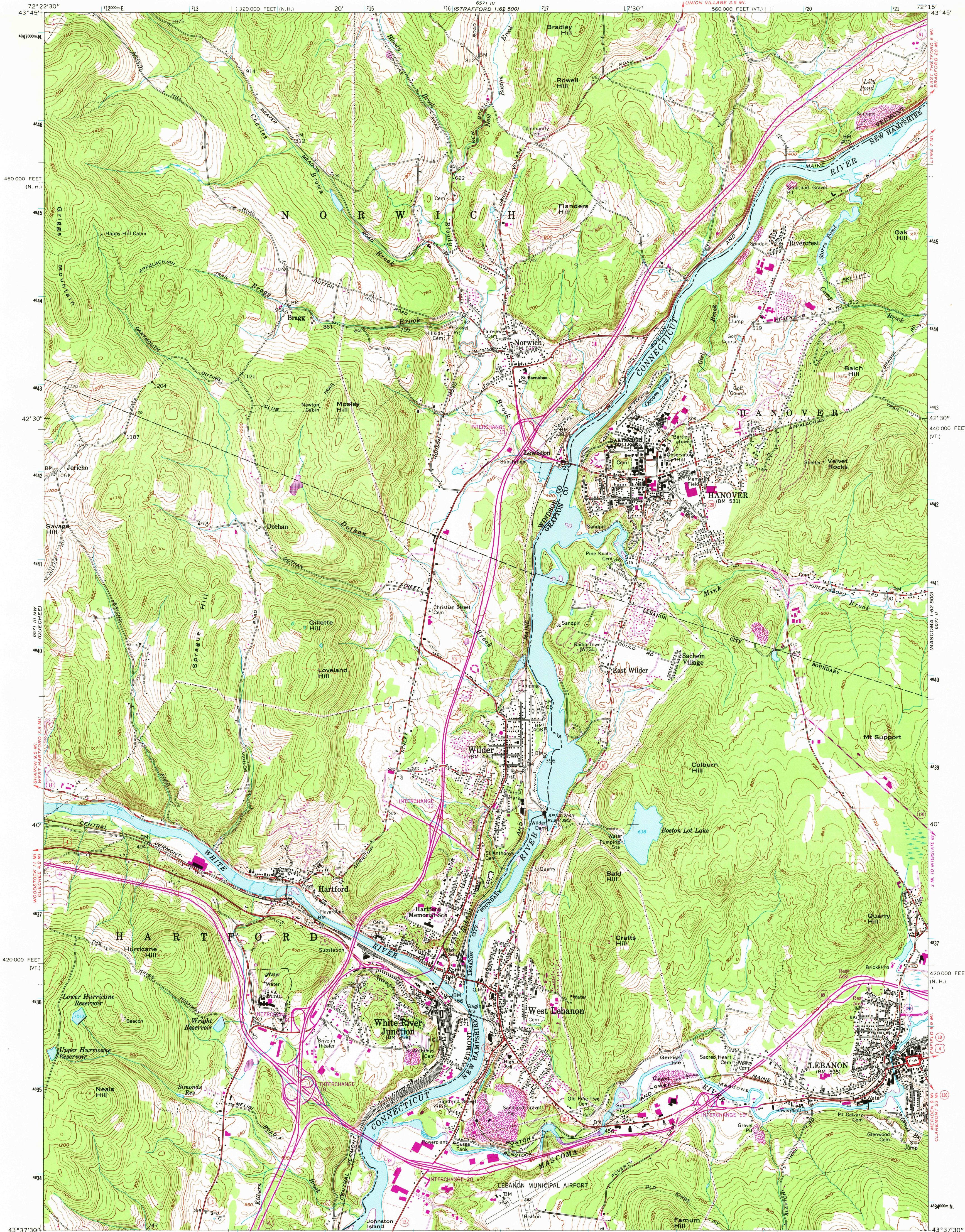
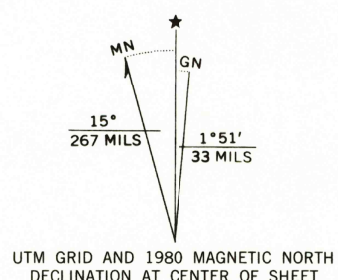


UNITED STATES
DEPARTMENT OF THE INTERIOR
GEOLOGICAL SURVEY

HANOVER QUADRANGLE
NEW HAMPSHIRE-VERMONT
7.5 MINUTE SERIES (TOPOGRAPHIC)



Maped, edited, and published by the Geological Survey
Control by USGS and USC&GS
Topography from aerial photographs by photogrammetric methods
Aerial photographs taken 1956. Field check 1959
Polyconic projection
10,000-foot grid based on Vermont and New Hampshire
coordinate systems
1000-meter Universal Transverse Mercator grid ticks,
zone 18, shown in blue. 1927 North American Datum
To place on the predicted North American Datum 1983
move the projection lines 3 meters south and
37 meters west as shown by dashed corner ticks
Fine red dashed lines indicate selected fence and field lines where
generally visible on aerial photographs. This information is unchecked
There may be private inholdings within the boundaries
of the National or State reservations shown on this map



THIS MAP COMPLIES WITH NATIONAL MAP ACCURACY STANDARDS
FOR SALE BY U. S. GEOLOGICAL SURVEY, RESTON, VIRGINIA 22092
A FOLDER DESCRIBING TOPOGRAPHIC MAPS AND SYMBOLS IS AVAILABLE ON REQUEST

Revisions shown in purple compiled from aerial photographs
taken 1978 and other source data. This information not
field checked. Map edited 1980



ROAD CLASSIFICATION
Heavy-duty ——— Light-duty ———
Medium-duty ——— Unimproved dirt ———
Interstate Route U. S. Route State Route
HANOVER, N. H.-VT.
N4337.5—W7215/7.5
1959
PHOTOREVISED 1980
DMA 6571 III NE-SERIES V813

JUL 20 1981
6400