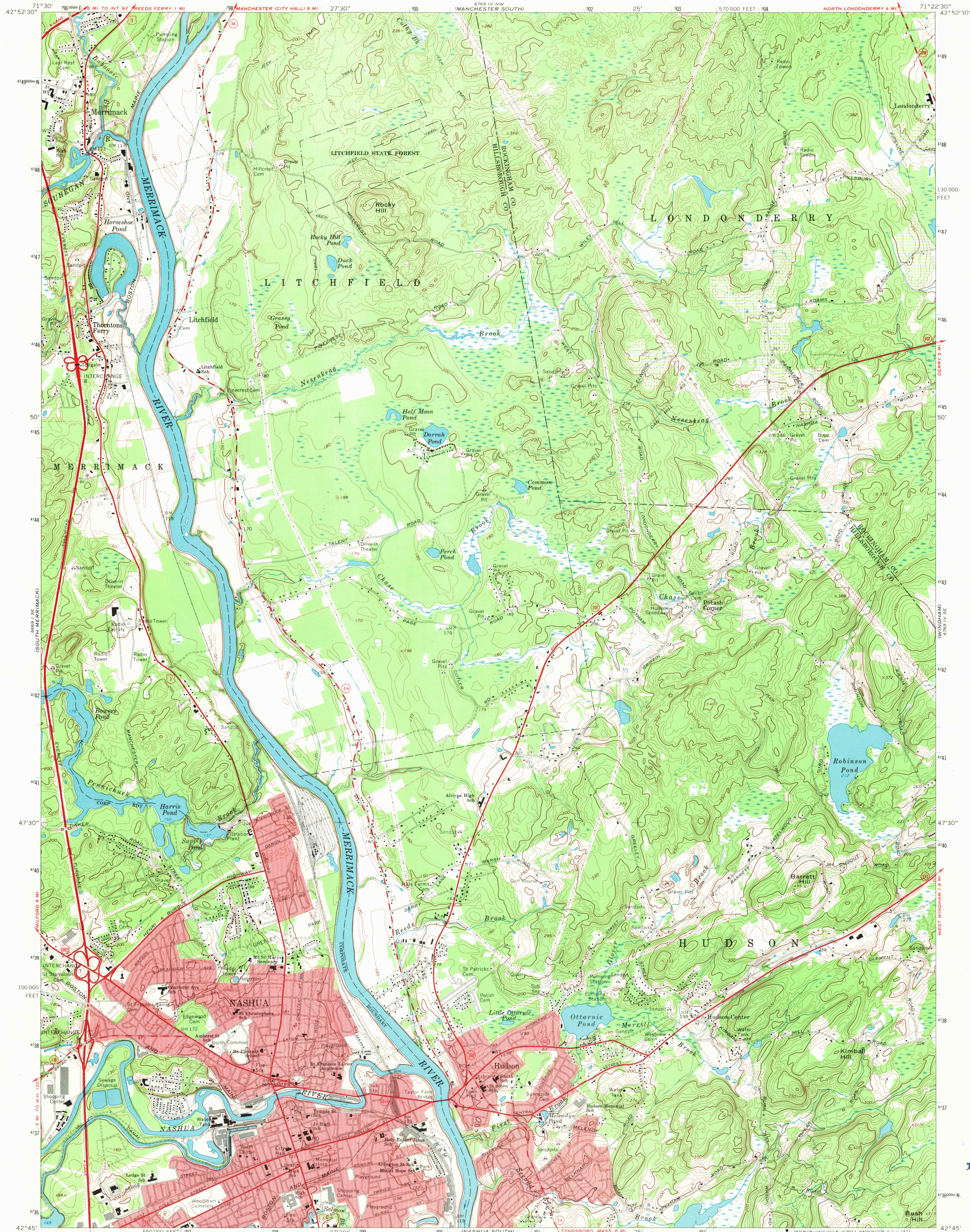
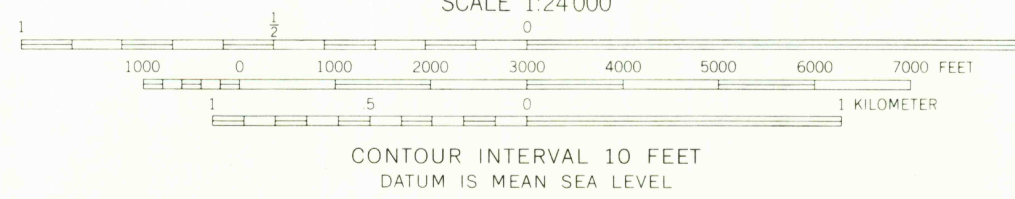
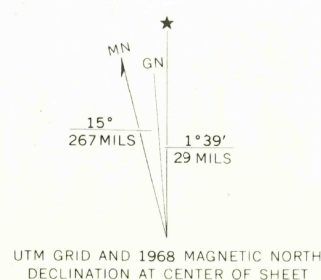


UNITED STATES  
DEPARTMENT OF THE INTERIOR  
GEOLOGICAL SURVEY

NASHUA NORTH QUADRANGLE  
NEW HAMPSHIRE  
7.5 MINUTE SERIES (TOPOGRAPHIC)  
SW/4 MANCHESTER 15' QUADRANGLE



Mapped, edited, and published by the Geological Survey  
Control by USGS, USC&GS, and New Hampshire Geodetic Survey  
Topography by photogrammetric methods from aerial  
photographs taken 1965. Field checked 1968  
Polyconic projection. 1927 North American datum  
10,000-foot grid based on New Hampshire coordinate system,  
1000-meter Universal Transverse Mercator grid ticks,  
zone 19, shown in blue  
Fine red dashed lines indicate selected fence and field lines where  
generally visible on aerial photographs. This information is unchecked  
Red tint indicates areas in which only landmark buildings are shown



ROAD CLASSIFICATION	
Primary highway, all weather, hard surface	Light-duty road, all weather, improved surface
Secondary highway, all weather, hard surface	Unimproved road, fair or dry weather
U. S. Route	State Route



NASHUA NORTH, N. H.  
SW/4 MANCHESTER 15' QUADRANGLE  
N4245-W7122.5/7.5

U.S.G.S.  
FILE COPY  
TOPOGRAPHIC DIVISION

3580  
JUN 18 1971

THIS MAP COMPLIES WITH NATIONAL MAP ACCURACY STANDARDS  
FOR SALE BY U. S. GEOLOGICAL SURVEY, WASHINGTON, D. C. 20242  
A FOLDER DESCRIBING TOPOGRAPHIC MAPS AND SYMBOLS IS AVAILABLE ON REQUEST

AMS 6769 IV SW-SERIES V812