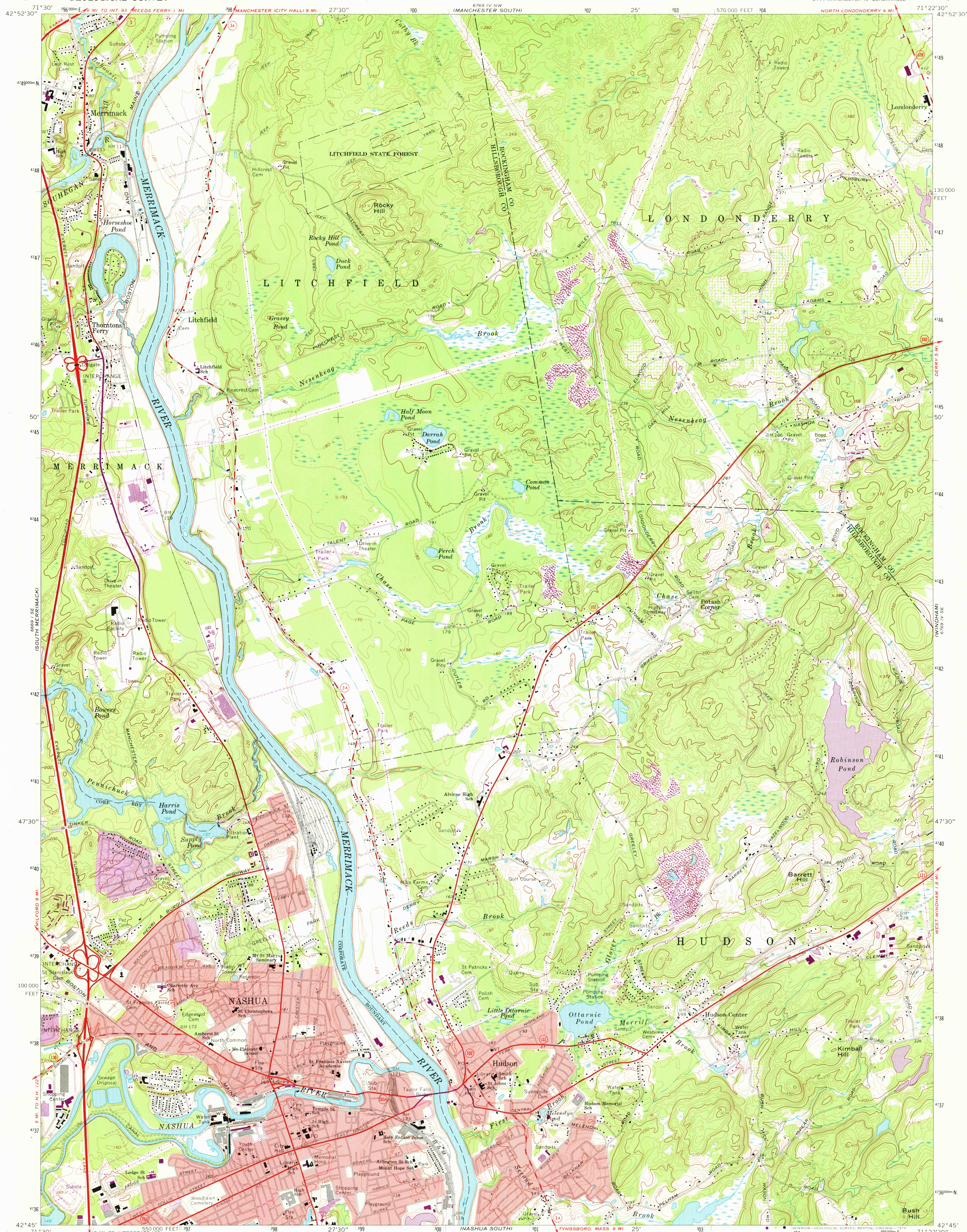


UNITED STATES
DEPARTMENT OF THE INTERIOR
GEOLOGICAL SURVEY

NASHUA NORTH QUADRANGLE
NEW HAMPSHIRE
7.5 MINUTE SERIES (TOPOGRAPHIC)
SW/4 MANCHESTER 15' QUADRANGLE



Mapped, edited, and published by the Geological Survey

Control by USGS, USC&GS, and New Hampshire Geodetic Survey

Topography by photogrammetric methods from aerial photographs taken 1965. Field checked 1968

Polyconic projection. 1927 North American datum

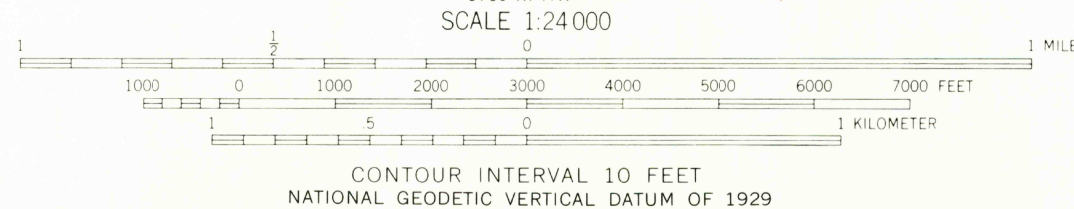
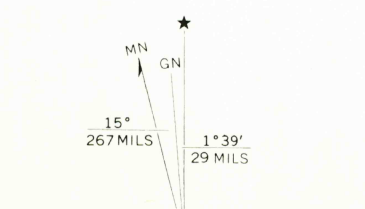
10,000-foot grid based on New Hampshire coordinate system, 1000-meter Universal Transverse Mercator grid ticks, zone 19, shown in blue

Fine red dashed lines indicate selected fence and field lines where generally visible on aerial photographs. This information is unchecked

Red tint indicates areas in which only landmark buildings are shown

Revisions shown in purple compiled from aerial photographs taken 1974. This information not field checked

Purple tint indicates extension of urban areas



THIS MAP COMPLIES WITH NATIONAL MAP ACCURACY STANDARDS
FOR SALE BY U. S. GEOLOGICAL SURVEY, RESTON, VIRGINIA 22092
A FOLDER DESCRIBING TOPOGRAPHIC MAPS AND SYMBOLS IS AVAILABLE ON REQUEST

ROAD CLASSIFICATION	
Primary highway, all weather, hard surface	Light-duty road, all weather, improved surface
Secondary highway, all weather, hard surface	Unimproved road, fair or dry weather
U. S. Route	State Route

NASHUA NORTH, N. H.
SW/4 MANCHESTER 15' QUADRANGLE
N4245-W7122.5/7.5

USGS
Historical File
Topographic Division

1968
PHOTOREVISED 1974
AMS 6769 IV SW-SERIES V812

JUL 12 1976