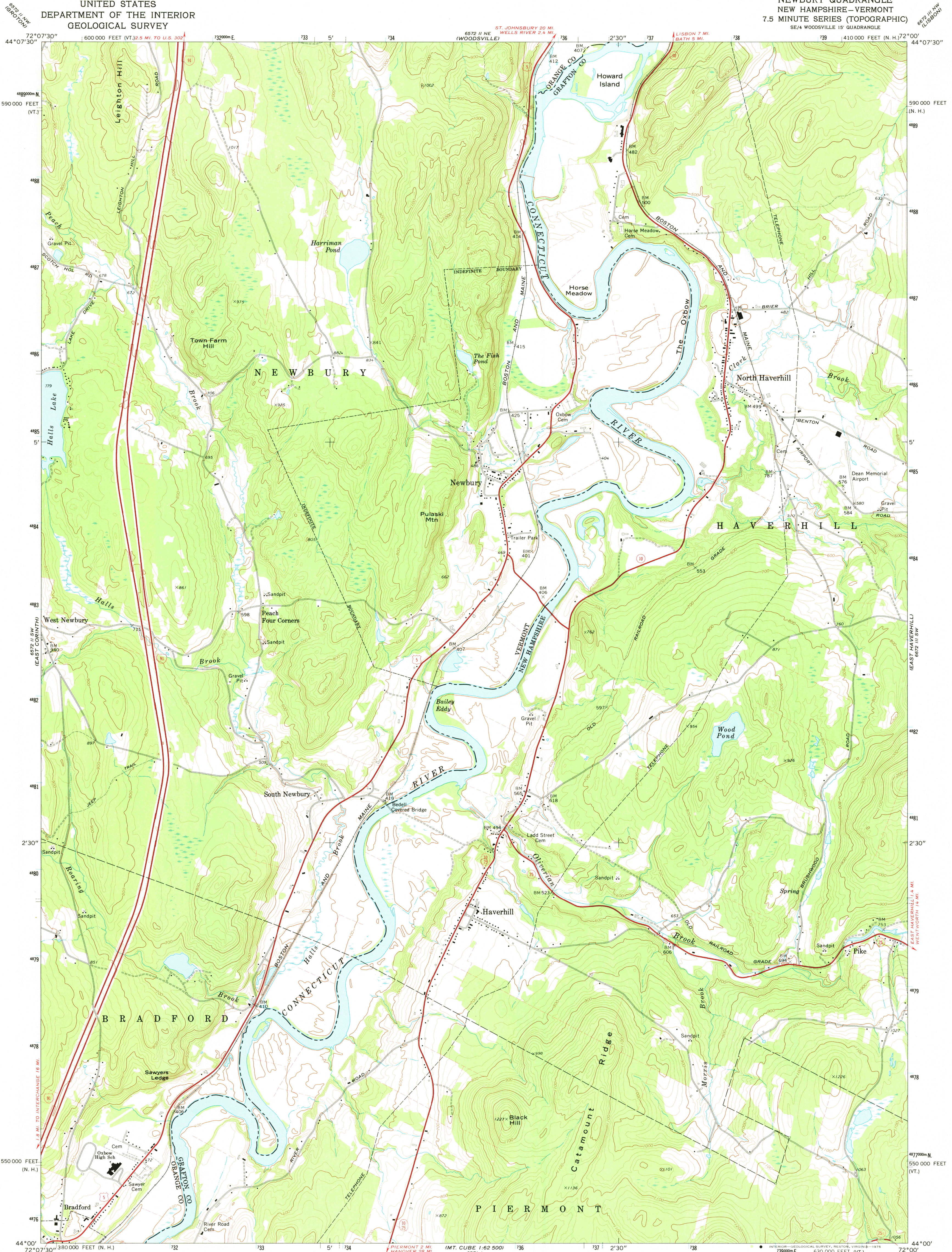


UNITED STATES  
DEPARTMENT OF THE INTERIOR  
GEOLOGICAL SURVEY

NEWBURY QUADRANGLE  
NEW HAMPSHIRE-VERMONT  
7.5 MINUTE SERIES (TOPOGRAPHIC)  
SE/4 WOODSVILLE 15' QUADRANGLE



Maped, edited, and published by the Geological Survey

Control by USGS and NOS/NOAA

Topography by photogrammetric methods from aerial photographs  
taken 1971. Field checked 1973

Projection: New Hampshire coordinate system

(Transverse Mercator)

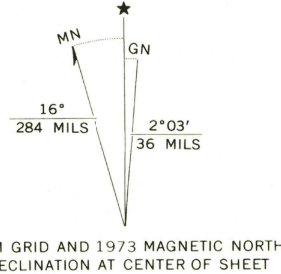
10,000-foot grid ticks based on New Hampshire and

Vermont coordinate systems

1000-metre Universal Transverse Mercator grid ticks,

zone 18, shown in blue. 1927 North American datum

Fine red dashed lines indicate selected fence and field lines where  
generally visible on aerial photographs. This information is unchecked



CONTOUR INTERVAL 20 FEET  
NATIONAL GEODETIC VERTICAL DATUM OF 1929

SCALE 1:24,000

1 MILE

1 KILOMETRE

THIS MAP COMPLIES WITH NATIONAL MAP ACCURACY STANDARDS  
FOR SALE BY U.S. GEOLOGICAL SURVEY, RESTON, VIRGINIA 22092

A FOLDER DESCRIBING TOPOGRAPHIC MAPS AND SYMBOLS IS AVAILABLE ON REQUEST

ROAD CLASSIFICATION  
Primary highway, hard surface  
Secondary highway, hard surface  
Light-duty road, hard or improved surface  
Unimproved road  
Interstate Route  
U.S. Route  
State Route

NEWBURY, N. H.-VT.  
SE/4 WOODSVILLE 15' QUADRANGLE  
N4400-W7200/7.5

1973

AMS 6572 II SE-SERIES V812



USGS  
Historical File  
Topographic Division

MAY 2 1975