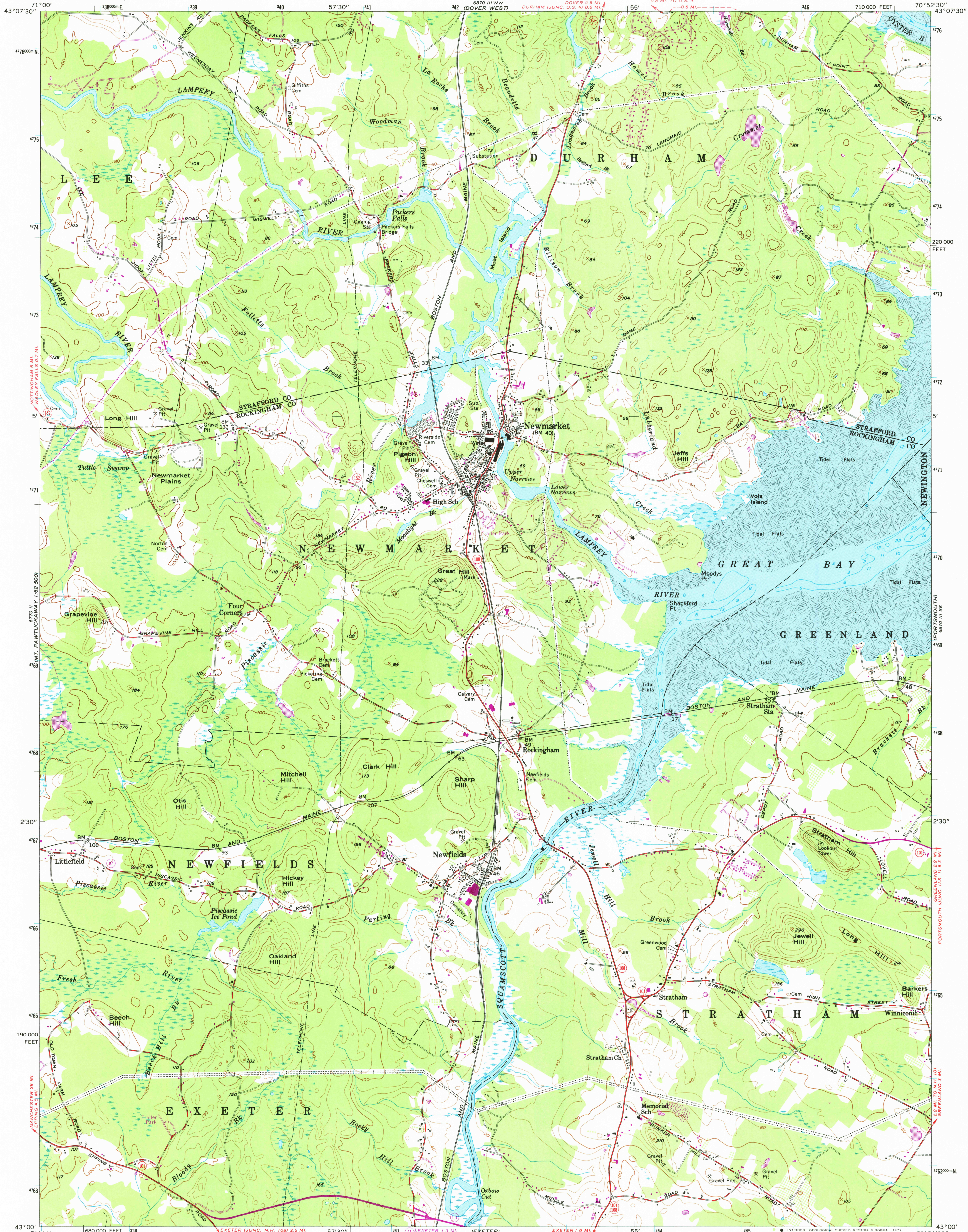


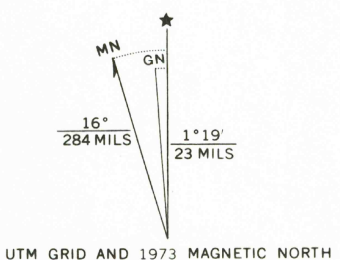
UNITED STATES
DEPARTMENT OF THE INTERIOR
GEOLOGICAL SURVEY

UNITED STATES
DEPARTMENT OF THE ARMY
CORPS OF ENGINEERS

NEWMARKET QUADRANGLE
NEW HAMPSHIRE
7.5 MINUTE SERIES (TOPOGRAPHIC)
SW/4 DOVER 15' QUADRANGLE



Mapped by the Army Map Service
Edited and published by the Geological Survey
Control by USGS, USC&GS, and New Hampshire Geodetic Survey
Culture and drainage in part compiled from aerial photographs
taken 1943. Topography by planetable surveys 1944
Culture revised by the Geological Survey 1956
Hydrography compiled from USC&GS chart 229 (1953)
Polyconic projection. 1927 North American datum
10,000-foot grid based on New Hampshire coordinate system
1000-meter Universal Transverse Mercator grid ticks,
zone 19, shown in blue
Revisions shown in purple compiled by the Geological Survey from
aerial photographs taken 1973. This information not field checked



SCALE 1:24,000
CONTOUR INTERVAL 20 FEET
NATIONAL GEODETIC VERTICAL DATUM OF 1929
DEPTH CURVES AND SOUNDINGS IN FEET—DATUM IS MEAN LOW WATER
SHORELINE SHOWN REPRESENTS THE APPROXIMATE LINE OF MEAN HIGH WATER
THE MEAN RANGE OF TIDE IS APPROXIMATELY 6.8 FEET IN GREAT BAY
THIS MAP COMPLIES WITH NATIONAL MAP ACCURACY STANDARDS
FOR SALE BY U.S. GEOLOGICAL SURVEY, RESTON, VIRGINIA 22092
A FOLDER DESCRIBING TOPOGRAPHIC MAPS AND SYMBOLS IS AVAILABLE ON REQUEST



ROAD CLASSIFICATION
Heavy-duty ——— Light-duty ———
Medium-duty ——— Unimproved dirt ———
Slate Route ———
USGS
Historical File
Topographic Division
NEWMARKET, N. H.
SW/4 DOVER 15' QUADRANGLE
N4300—W7052.5/7.5
1956
PHOTOREVISED 1973
AMS 6870 III SW—SERIES V812

MAY 23 1977
11602