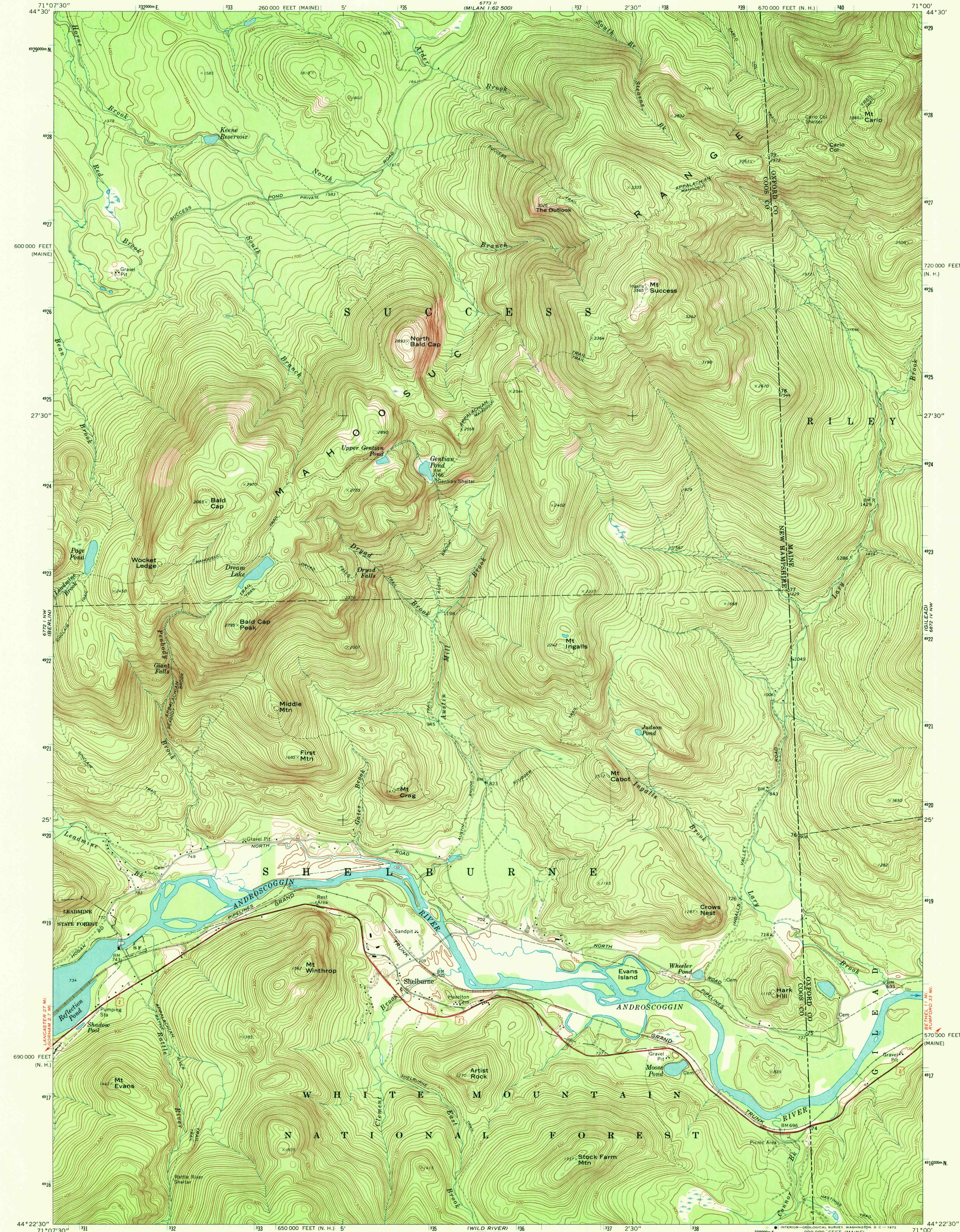
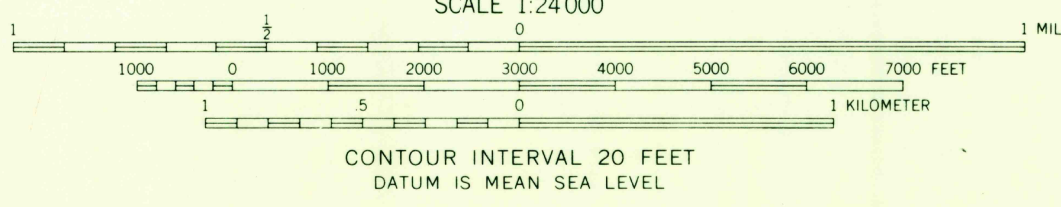
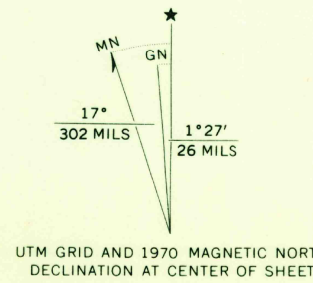


UNITED STATES
DEPARTMENT OF THE INTERIOR
GEOLOGICAL SURVEY

SHELBURNE QUADRANGLE
NEW HAMPSHIRE - MAINE
7.5 MINUTE SERIES (TOPOGRAPHIC)
NE 1/4 GORHAM 15' QUADRANGLE



Mapped, edited, and published by the Geological Survey
Control by USGS and USC&GS
Topography by photogrammetric methods from aerial photographs
taken 1964 and 1965. Field checked 1970
Polyconic projection. 1927 North American datum
10,000-foot grids based on New Hampshire coordinate system
and Maine coordinate system, west zone
1000-meter Universal Transverse Mercator grid ticks,
zone 19, shown in blue



ROAD CLASSIFICATION
Primary highway, hard surface
Secondary highway, hard surface
Light-duty road, hard or improved surface
Unimproved road
Interstate Route
U. S. Route
State Route

SHELBURNE, N. H. - MAINE
NE 1/4 GORHAM 15' QUADRANGLE
N4422.5 - W7100/7.5

1970

AMS 6772 I NE - SERIES V812

THIS MAP COMPLIES WITH NATIONAL MAP ACCURACY STANDARDS
FOR SALE BY U. S. GEOLOGICAL SURVEY, WASHINGTON, D. C. 20242
A FOLDER DESCRIBING TOPOGRAPHIC MAPS AND SYMBOLS IS AVAILABLE ON REQUEST

USGS
HISTORICAL FILE
TOPOGRAPHIC DIVISION