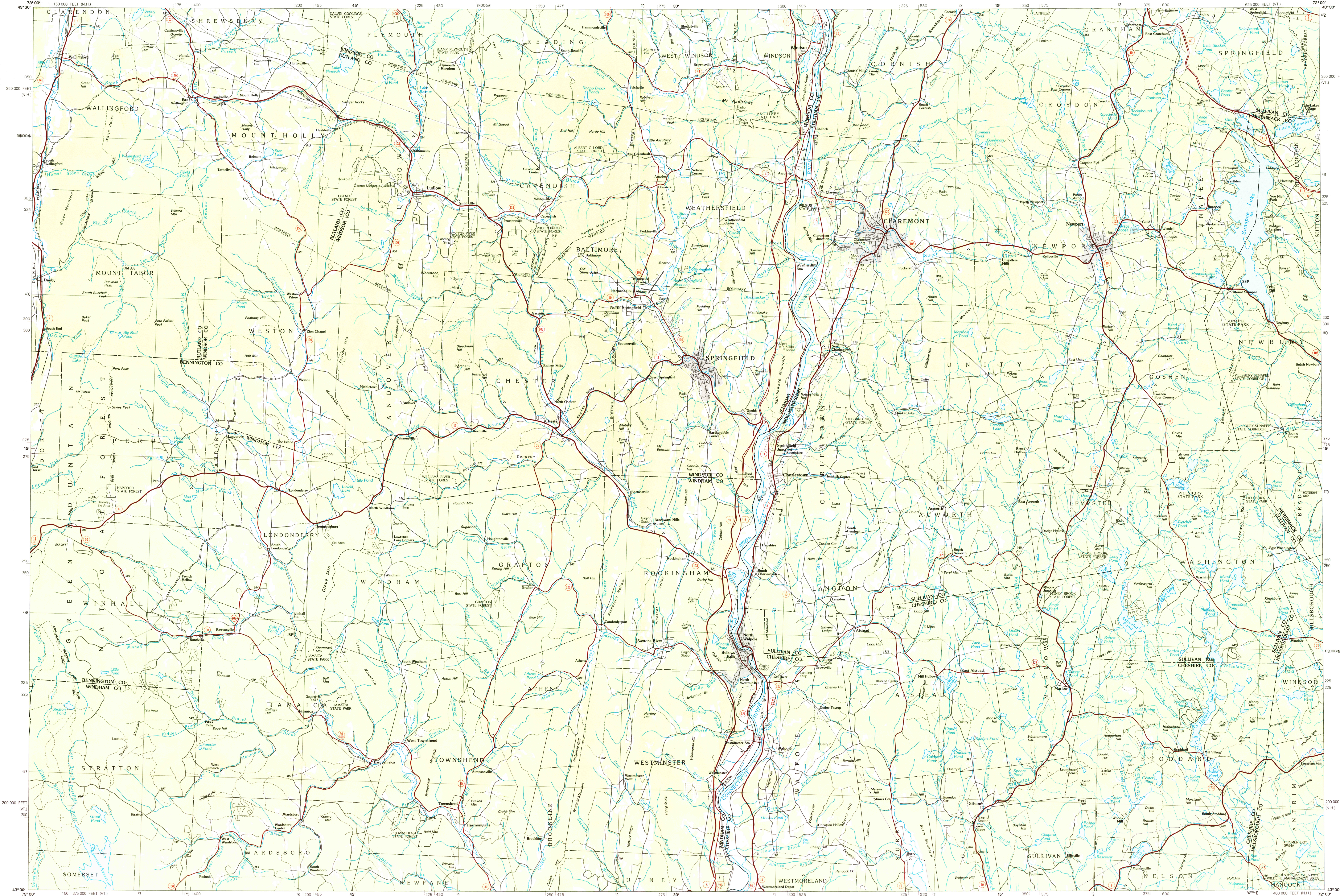


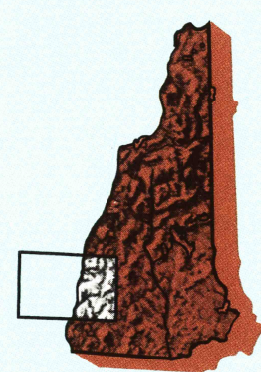
CLAREMONT, NEW HAMPSHIRE-VERMONT



30 X 60 MINUTE SERIES (PLANIMETRIC)

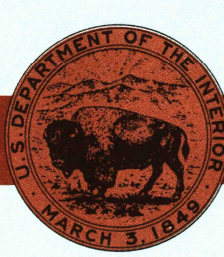
Claremont
NEW HAMPSHIRE-VERMONT

1:100 000-scale
planimetric map



30 X 60 MINUTE QUADRANGLE
SHOWING

- Elevations in meters
- Highways, roads and other manmade structures
- Water features
- Woodland areas
- Geographic names



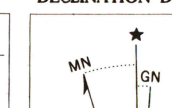
GEOLOGICAL SURVEY

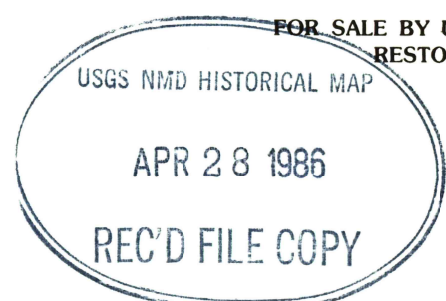
1985

Produced by the United States Geological Survey
Compiled from USGS 1:24 000 and 1:62 500-scale topographic maps dated 1955-1984. Planimetry revised from aerial photographs taken 1983 and other source data. Revised information not field checked. Map edited 1985
Projection and 10 000-meter grid, zone 18.
Universal Transverse Mercator
25 000-foot grid ticks based on Vermont coordinate system and New Hampshire coordinate system
1927 North American Datum
To place on the predicted North American Datum 1983, move the projection lines 4 meters south and 7 meters west
There may be private inholdings within the boundaries of the National or State reservations shown on this map

NATIONAL GEODETIC VERTICAL DATUM OF 1929
ELEVATIONS SHOWN TO THE NEAREST METER

THIS MAP COMPLIES WITH NATIONAL MAP ACCURACY STANDARDS

CONVERSION TABLE		DECLINATION DIAGRAM	ADJOINING MAPS			
Meters	Feet		1	2	3	4
1	3.2808		1	2	3	4
2	6.5617		5	6	7	8
3	9.8425					
4	13.1234					
5	16.4042					
6	19.6850					
7	22.9658					
8	26.2467					
9	29.5275					
10	32.8084					
To convert meters to feet multiply by 3.2808		UTM grid convergence (GN) and 1983 magnetic declination (MN) at center of map Diagram is approximate	1 Ticonderoga 2 Rutland 3 Lake Umbagog 4 Glen Falls 5 Concord 6 Albany 7 Keese 8 Lowell			
To convert feet to meters multiply by 0.3048						



Topographic Map Symbols

- Primary highway, hard surface.
- Secondary highway, hard surface.
- Light duty road, principal street, hard or improved surface.
- Other road or street, trail.
- Route marker: Interstate, U.S. State.
- Railroad: standard gage; narrow gage.
- Bridge: overpass; underpass.
- Tunnel: road; railroad.
- Built up area, locally: elevation.
- Stream, lake, pond, marsh, swamp.
- Area to be submerged; marsh, swamp.
- Area subject to controlled inundation; woodland.
- Scrub; mangrove.
- Orchard; vineyard.
- National boundary.
- State boundary.
- County boundary.
- National or State reservation boundary.
- Land grant boundary.
- U.S. public lands survey: range, township, section.
- Range, township, section line: protected.
- Power transmission line; pipeline.
- Dam; dam with lock.
- Cemetery: building.
- Windmill; water well; spring.
- Mine shaft; adit or cave; mine, quarry; gravel pit.
- Campground; picnic area; U.S. location monument.
- Ruins; cliff dwelling.
- Distorted surface: strip mine, lava, sand.
- Contours: index; intermediate; supplementary.
- Bathymetric contours: index; intermediate.
- Stream, lake, pond; intermittent.
- Rapids, large and small; falls, large and small.
- Area to be submerged; marsh, swamp.
- Area subject to controlled inundation; woodland.
- Scrub; mangrove.
- Orchard; vineyard.

A pamphlet describing topographic maps is available on request