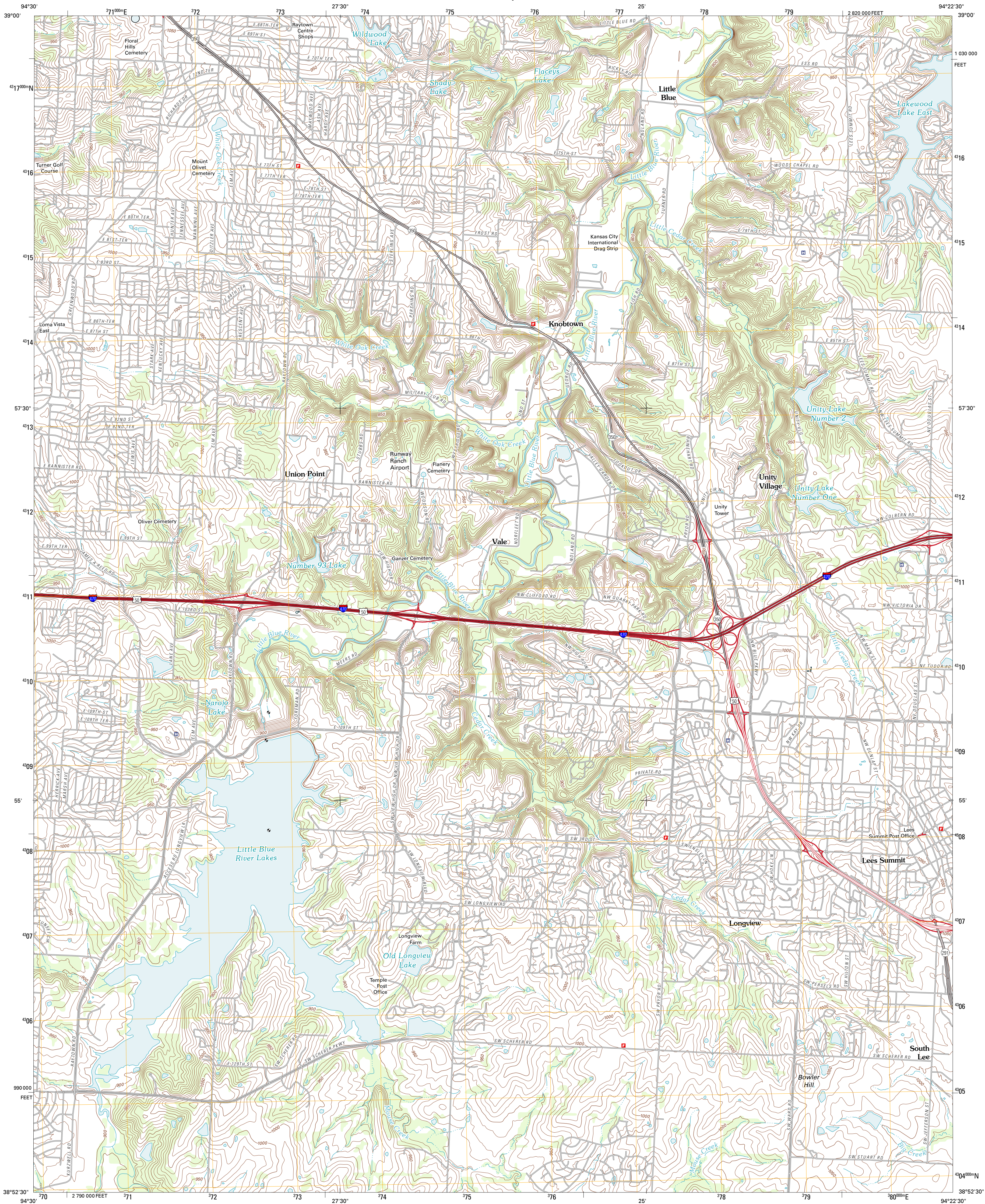




U.S. DEPARTMENT OF THE INTERIOR  
U. S. GEOLOGICAL SURVEY

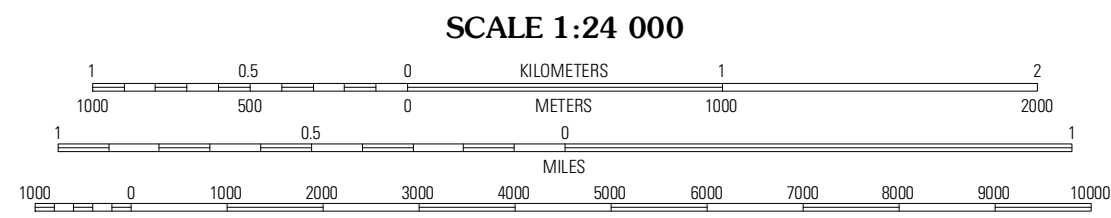
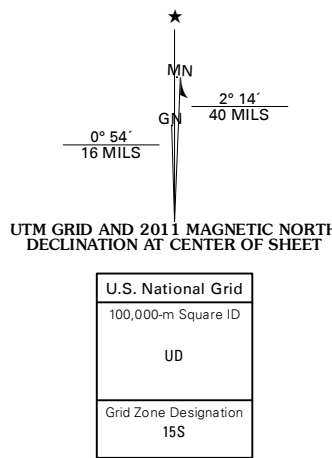


LEES SUMMIT QUADRANGLE  
MISSOURI-JACKSON CO.  
7.5-MINUTE SERIES



Produced by the United States Geological Survey  
North American Datum of 1983 (NAD83)  
World Geodetic System of 1984 (WGS84), Projection and  
1 000-meter grid; Universal Transverse Mercator, Zone 15S  
10 000-foot ticks; Missouri Coordinate System of 1983 (west  
zone)

Imagery.....NAIP, July 2010  
Roads.....©2006-2011 TomTom  
Names.....GNIS, 2011  
Hydrography.....National Hydrography Dataset, 2010  
Contours.....National Elevation Dataset, 2008  
Boundaries.....Census, IBWC, IBC, USGS, 1972 - 2010



CONTOUR INTERVAL 10 FEET  
NORTH AMERICAN VERTICAL DATUM OF 1988  
This map was produced to conform with the  
National Geospatial Program US Topo Product Standard, 2011.  
A metadata file associated with this product is draft version 0.6.1



| QUADRANGLE LOCATION |              |               |  |
|---------------------|--------------|---------------|--|
| Kansas City         | Independence | Blue Springs  |  |
| Grandview           | Lees Summit  | Lake Jacomo   |  |
| Belton              | Raymore      | Pleasant Hill |  |

| ROAD CLASSIFICATION |                  |            |             |
|---------------------|------------------|------------|-------------|
| Interstate Route    | State Route      | Local Road | 4WD         |
| US Route            | State Route      | Local Road | 4WD         |
| Ramp                | Interstate Route | US Route   | State Route |

LEES SUMMIT, MO  
2011