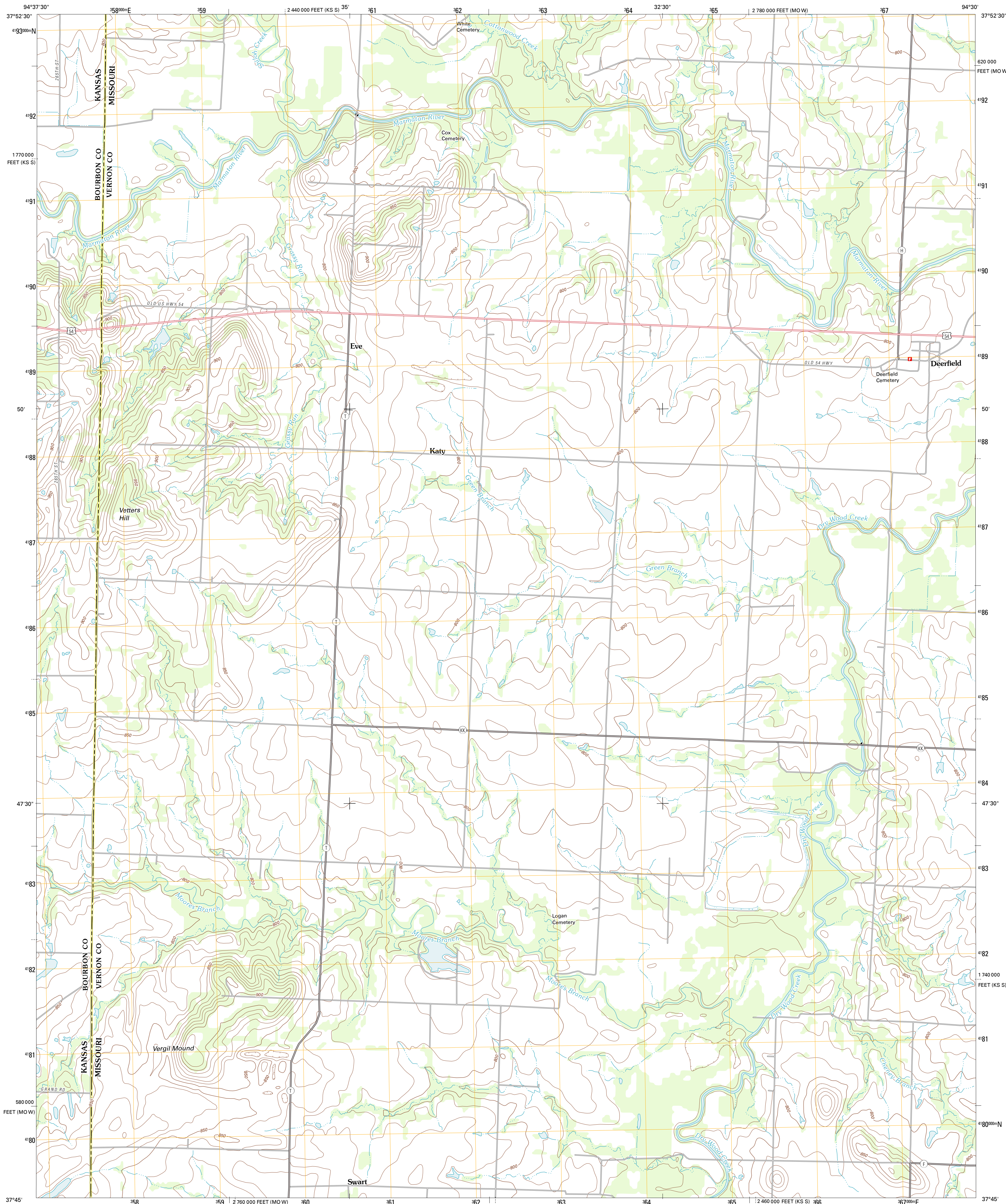




U.S. DEPARTMENT OF THE INTERIOR  
U. S. GEOLOGICAL SURVEY



DEERFIELD QUADRANGLE  
MISSOURI-KANSAS  
7.5-MINUTE SERIES

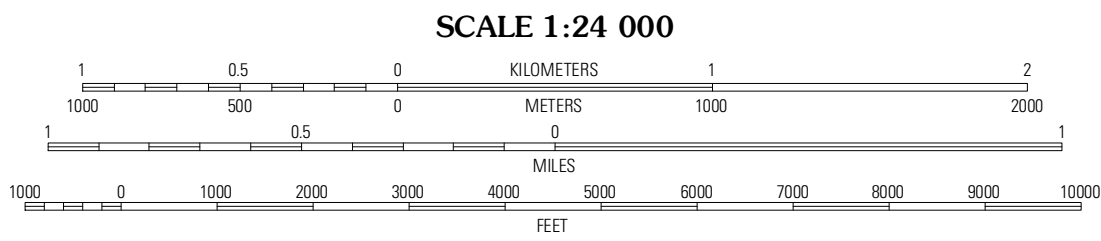


Produced by the United States Geological Survey  
North American Datum of 1983 (NAD83)  
World Geodetic System of 1984 (WGS84). Projection and  
1 000-meter grid: Universal Transverse Mercator, Zone 15S  
10 000-foot ticks: Missouri Coordinate System of 1983 (west  
zone), Kansas Coordinate System of 1983 (south zone)

Imagery.....NAIP, June 2010 - July 2010  
Roads.....©2006-2011 TomTom  
Names.....GNIS, 2011  
Hydrography.....National Hydrography Dataset, 2010  
Contours.....National Elevation Dataset, 2005  
Boundaries.....Census, IBWC, IBC, USGS, 1972 - 2010

UTM GRID AND 2011 MAGNETIC NORTH  
DECLINATION AT CENTER OF SHEET

U.S. National Grid  
100,000-m Square ID  
UB  
Grid Zone Designation  
15S



CONTOUR INTERVAL 10 FEET  
NORTH AMERICAN VERTICAL DATUM OF 1988

This map was produced to conform with the  
National Geospatial Program US Topo Product Standard, 2011.  
A metadata file associated with this product is draft version 0.6.1



QUADRANGLE LOCATION		
Hammond	Richards	Metz
Fort Scott	Deerfield	Moundville
Cato	Garland	Bronaugh

ADJOINING 7.5' QUADRANGLES

ROAD CLASSIFICATION

Interstate Route  
US Route  
Ramp

State Route  
Local Road  
4WD

DEERFIELD, MO-KS  
2011