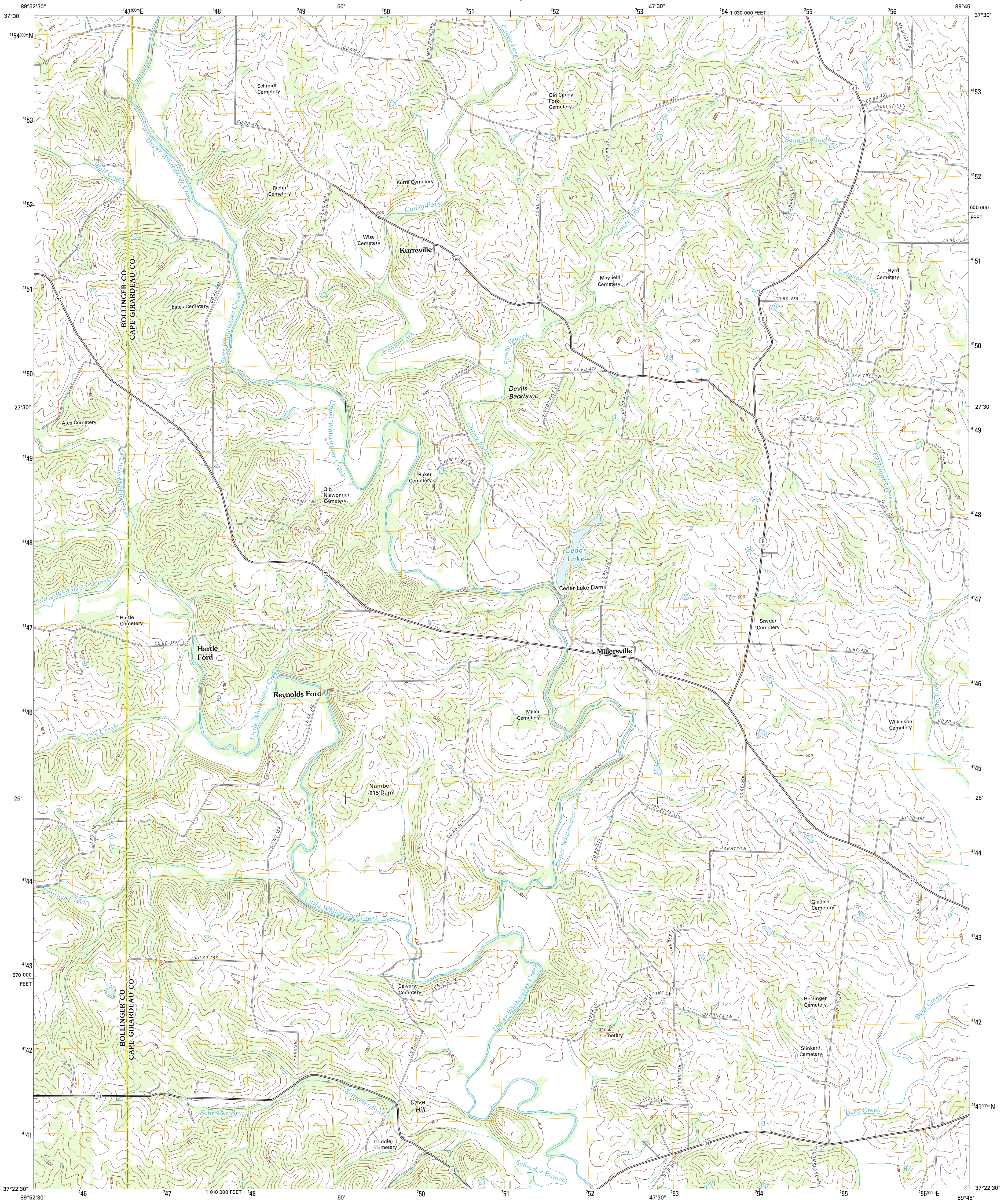




U.S. DEPARTMENT OF THE INTERIOR  
U. S. GEOLOGICAL SURVEY

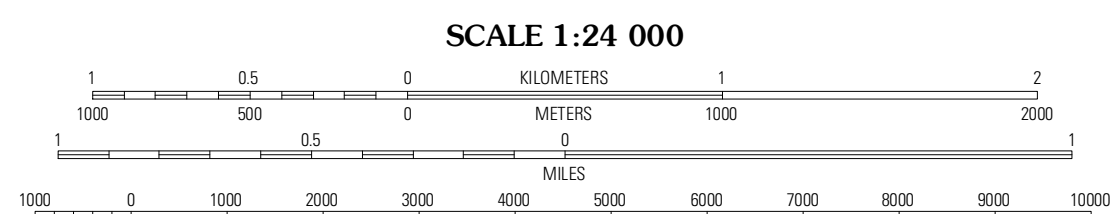
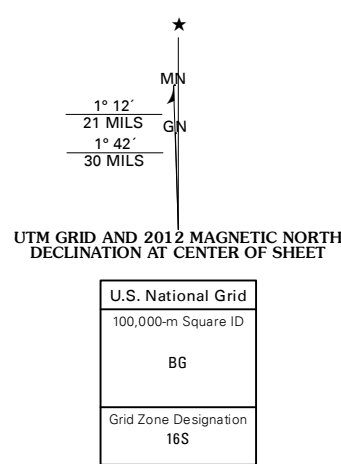


MILLERSVILLE QUADRANGLE  
MISSOURI  
7.5-MINUTE SERIES



Produced by the United States Geological Survey  
North American Datum of 1983 (NAD83)  
World Geodetic System of 1984 (WGS84). Projection and  
1000-meter grid: Universal Transverse Mercator, Zone 16S  
10 000-foot ticks: Missouri Coordinate System of 1983 (east  
zone)

Imagery.....©2006-2011, TomTom  
Roads.....©2006-2011, TomTom  
Names.....©2006-2011, TomTom  
Hydrography.....National Hydrography Dataset, 2010  
Contours.....National Elevation Dataset, 2007  
Boundaries.....Census, IBWC, IBC, USGS, 1972 - 2010



CONTOUR INTERVAL 20 FEET  
NORTH AMERICAN VERTICAL DATUM OF 1988

This map was produced to conform with the  
National Geospatial Program US Topo Product Standard, 2011.  
A metadata file associated with this product is draft version 0.6.1



| QUADRANGLE LOCATION |              |             |
|---------------------|--------------|-------------|
| Selwicksville       | Friedheim    | Oak Ridge   |
| Scopus              | Millersville | Jackson     |
| Marble Hill         | Burfordville | Gordonville |

| ROAD CLASSIFICATION |             |             |
|---------------------|-------------|-------------|
| Interstate Route    | State Route | Local Road  |
| US Route            | 4WD         |             |
| Ramp                |             |             |
| Interstate Route    | US Route    | State Route |

MILLERSVILLE, MO  
2012