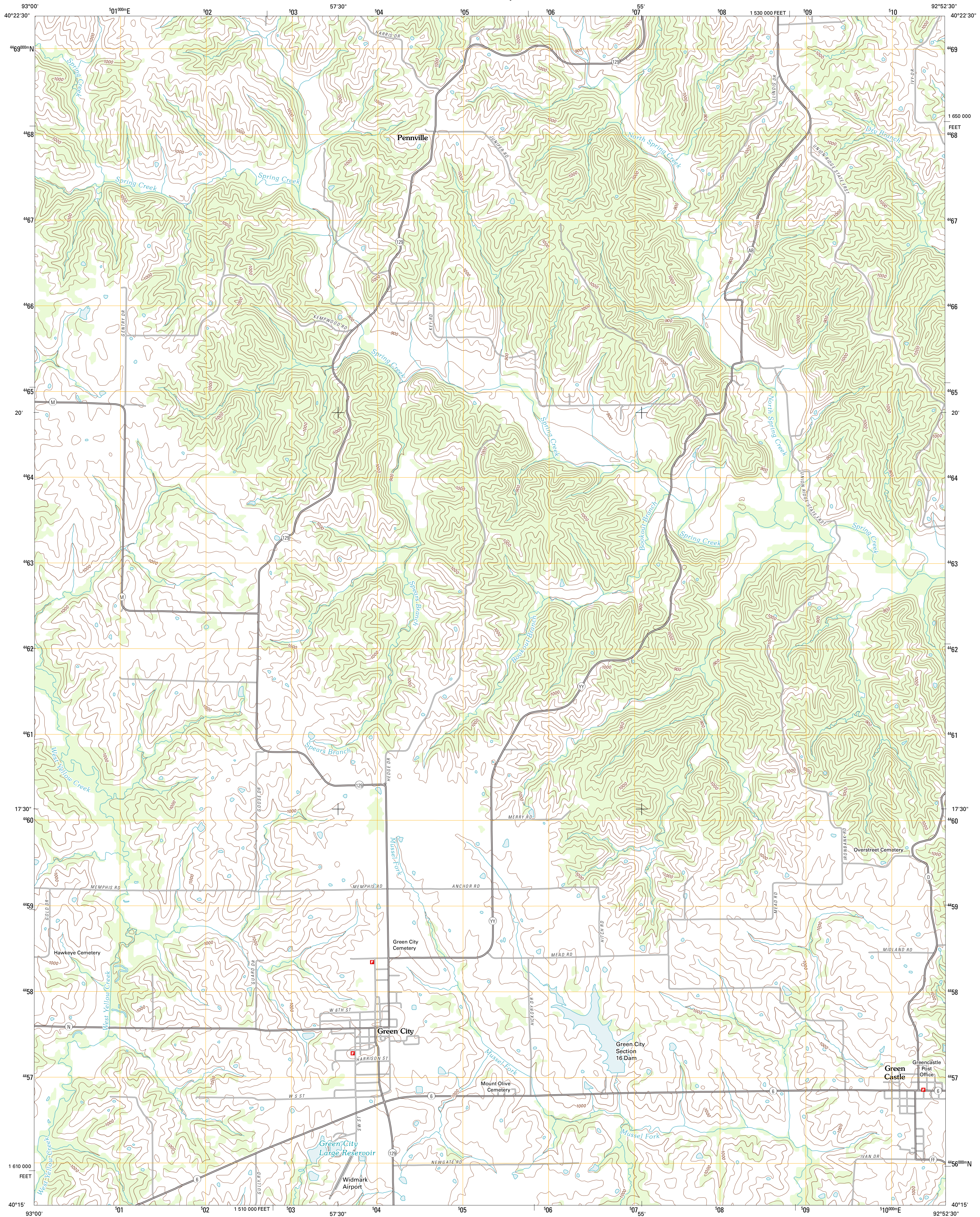




U.S. DEPARTMENT OF THE INTERIOR
U. S. GEOLOGICAL SURVEY



GREEN CITY QUADRANGLE
MISSOURI-SULLIVAN CO.
7.5-MINUTE SERIES

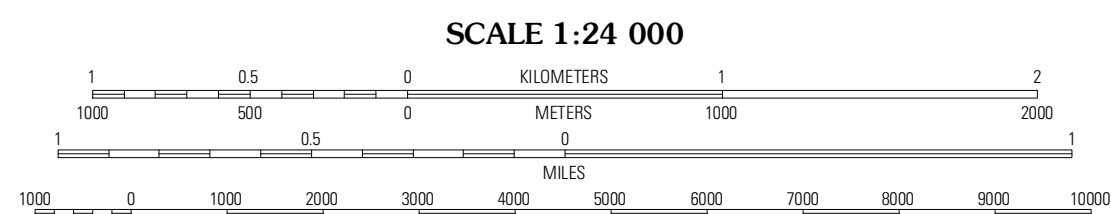


Produced by the United States Geological Survey
North American Datum of 1983 (NAD83)
World Geodetic System of 1984 (WGS84). Projection and
1 000-meter grid: Universal Transverse Mercator, Zone 15T
10 000-foot ticks: Missouri Coordinate System of 1983
(central zone)

Imagery.....NAIP, June 2010
Roads.....©2006-2011 TomTom
Names.....GNIS, 2011
Hydrography.....National Hydrography Dataset, 2010
Contours.....National Elevation Dataset, 2004
Boundaries.....Census, IBWC, IBC, USGS, 1972 - 2010

UTM GRID AND 2012 MAGNETIC NORTH
DECLINATION AT CENTER OF SHEET

U.S. National Grid
100,000-m Square ID
WE
Grid Zone Designation
15T



CONTOUR INTERVAL 20 FEET
NORTH AMERICAN VERTICAL DATUM OF 1988

This map was produced to conform with the
National Geospatial Program US Topo Product Standard, 2011.
A metadata file associated with this product is draft version 0.6.1



QUADRANGLE LOCATION		
Unionville West	Unionville East	Grayville
Pollock	Green City	Stahl
Milan East	Myrtle	Pure Air

ADJOINING 7.5' QUADRANGLES

ROAD CLASSIFICATION

Interstate Route
US Route
Ramp

State Route
Local Road
4WD

Interstate Route
US Route
State Route

GREEN CITY, MO
2012