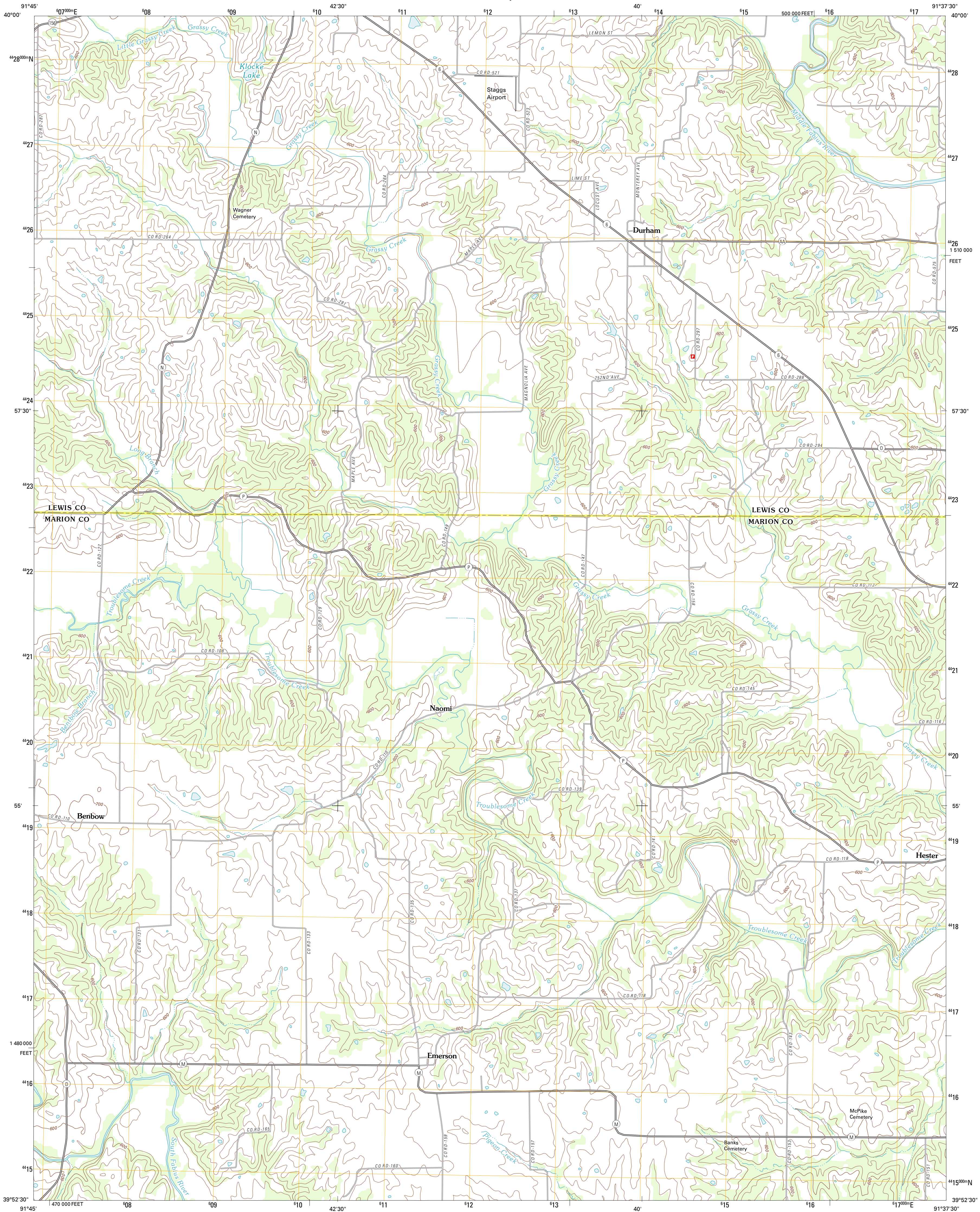




U.S. DEPARTMENT OF THE INTERIOR  
U. S. GEOLOGICAL SURVEY



DURHAM QUADRANGLE  
MISSOURI  
7.5-MINUTE SERIES

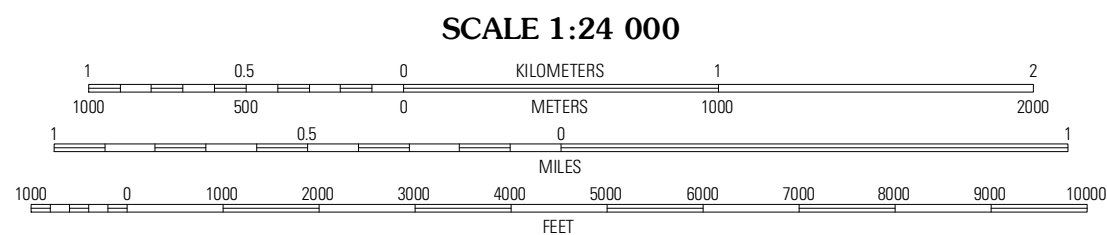


Produced by the United States Geological Survey  
North American Datum of 1983 (NAD83)  
World Geodetic System of 1984 (WGS84). Projection and  
1 000-meter grid: Universal Transverse Mercator, Zone 15S  
10 000-foot ticks: Missouri Coordinate System of 1983 (east  
zone)

Imagery.....NAIP, June 2010  
Roads.....©2006-2011 TomTom  
Names.....GNIS, 2011  
Hydrography.....National Hydrography Dataset, 2010  
Contours.....National Elevation Dataset, 2004  
Boundaries.....Census, IBWC, IBC, USGS, 1972 - 2010

UTM GRID AND 2012 MAGNETIC NORTH  
DECLINATION AT CENTER OF SHEET

U.S. National Grid  
100,000-m Square ID  
XE  
Grid Zone Designation  
15S



CONTOUR INTERVAL 20 FEET  
NORTH AMERICAN VERTICAL DATUM OF 1988  
This map was produced to conform with the  
National Geospatial Program US Topo Product Standard, 2011.  
A metadata file associated with this product is draft version 0.6.1



QUADRANGLE LOCATION

Lewistown	Monticello	La Grange
Nelsonville	Durham	Maywood
Emden	Philadelphus	Palmyra

ADJOINING 7.5 QUADRANGLES

ROAD CLASSIFICATION

Interstate Route	State Route
US Route	Local Road
Ramp	4WD

Legend symbols for road types: Interstate Route (thick red line), US Route (thin red line), Ramp (red line with blue arrow), State Route (thin black line), Local Road (thick black line), 4WD (dashed black line).

DURHAM, MO  
2012