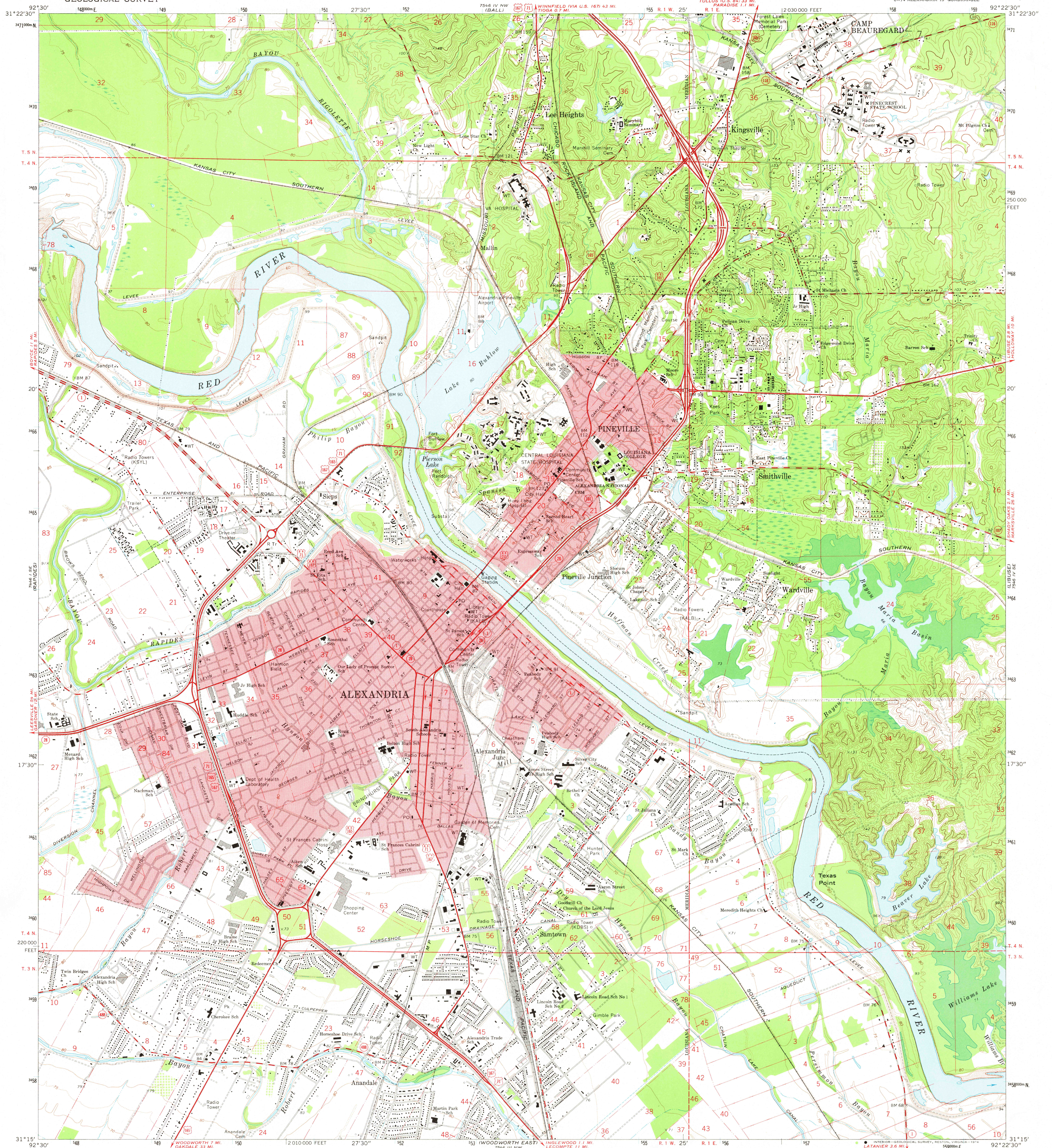
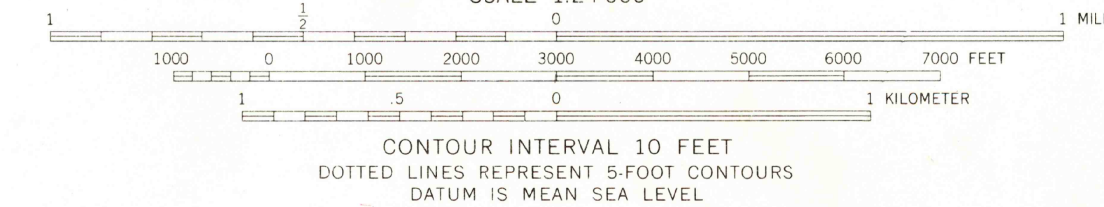
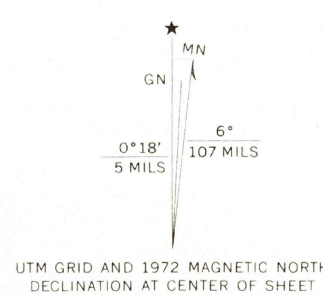


UNITED STATES
DEPARTMENT OF THE INTERIOR
GEOLOGICAL SURVEY

ALEXANDRIA QUADRANGLE
LOUISIANA—RAPIDES PARISH
7.5 MINUTE SERIES (TOPOGRAPHIC)
SW/4 ALEXANDRIA 15' QUADRANGLE



Mapped, edited, and published by the Geological Survey
Control by USGS, USC&GS, and Louisiana Geodetic Survey
Topography by photogrammetric methods from aerial photographs
taken 1955 and planimetric surveys 1957. Revised from aerial
photographs taken 1971. Field checked 1972
Polyconic projection. 1927 North American datum
10,000-foot grid based on Louisiana coordinate system, north zone
1000-meter Universal Transverse Mercator grid ticks,
zone 15, shown in blue
Red tint indicates areas in which only landmark buildings are shown
Fine red dashed lines indicate selected fence and field lines where
generally visible on aerial photographs. This information is unchecked



ROAD CLASSIFICATION
Primary highway, hard surface
Secondary highway, hard surface
Unimproved road
Interstate Route
U. S. Route
State Route
Light-duty road, hard or improved surface
Unimproved road
Interstate Route
U. S. Route
State Route
ALEXANDRIA, LA.
SW/4 ALEXANDRIA 15' QUADRANGLE
N3115—W9222.5/7.5
1972
AMS 7546 IV SW—SERIES V885

FEB 12 1975