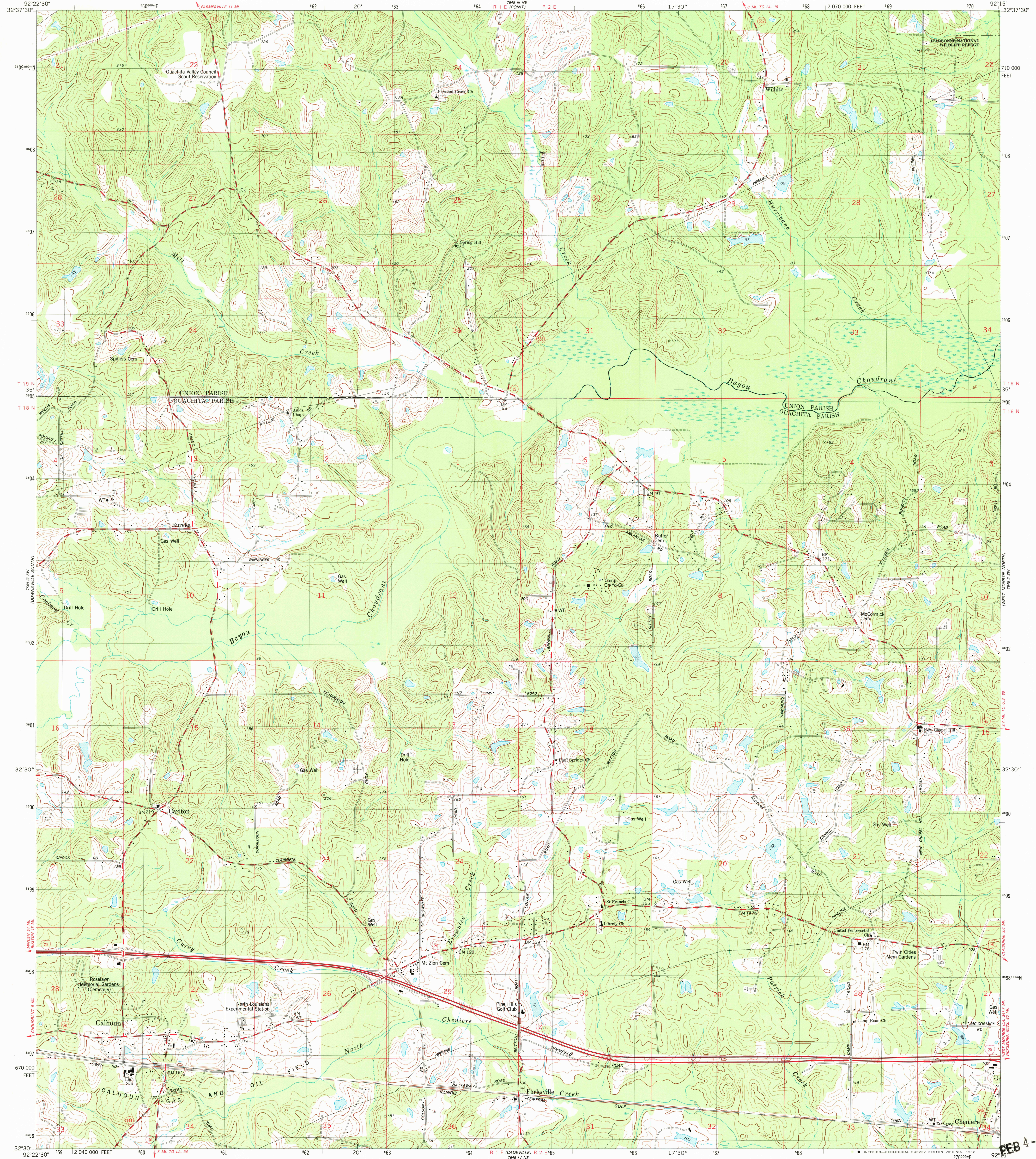


2049 11 NW  
DOWNVILLE  
NORTH

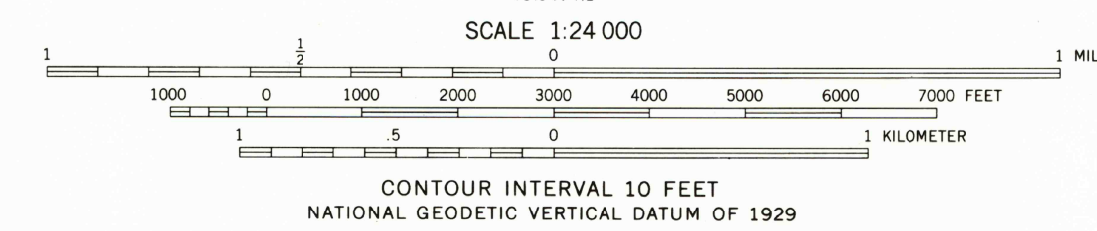
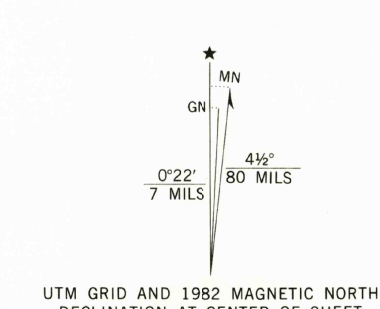
UNITED STATES  
DEPARTMENT OF THE INTERIOR  
GEOLOGICAL SURVEY

CALHOUN QUADRANGLE  
LOUISIANA  
7.5 MINUTE SERIES (TOPOGRAPHIC)  
SE/4 CALHOUN 15' QUADRANGLE

7549 11 NW  
ROCKY BRANCH



Mapped, edited, and published by the Geological Survey  
Control by USGS, NOS/NOAA, and Louisiana Department of Highways  
Topography by photogrammetric methods from aerial photographs  
taken 1976. Field checked 1978. Map edited 1982  
Projection and 10,000-foot grid ticks: Louisiana coordinate  
system, north zone (Lambert conformal conic)  
1000-meter Universal Transverse Mercator grid, zone 15  
1927 North American Datum  
To place on the predicted North American Datum 1983  
move the projection lines 12 meters south and  
14 meters east as shown by dashed corner ticks  
There may be private inholdings within the boundaries of  
the National or State reservations shown on this map  
Fine red dashed lines indicate selected fence and field lines where  
generally visible on aerial photographs. This information is unchecked



THIS MAP COMPLIES WITH NATIONAL MAP ACCURACY STANDARDS  
FOR SALE BY U. S. GEOLOGICAL SURVEY, DENVER, COLORADO 80225, OR RESTON, VIRGINIA 22092  
AND STATE OF LOUISIANA, DEPARTMENT OF PUBLIC WORKS, BATON ROUGE, LOUISIANA 70804  
A FOLDER DESCRIBING TOPOGRAPHIC MAPS AND SYMBOLS IS AVAILABLE ON REQUEST



ROAD CLASSIFICATION  
Primary highway, hard surface ———— Light-duty road, hard or improved surface ————  
Secondary highway, hard surface ———— Unimproved road ————  
○ Interstate Route ○ U. S. Route ○ State Route

CALHOUN, LA.  
SE/4 CALHOUN 15' QUADRANGLE  
N3230-W9215/7.5

1982  
DMA 7549 III SE-SERIES V885

FEB 4 - 1983