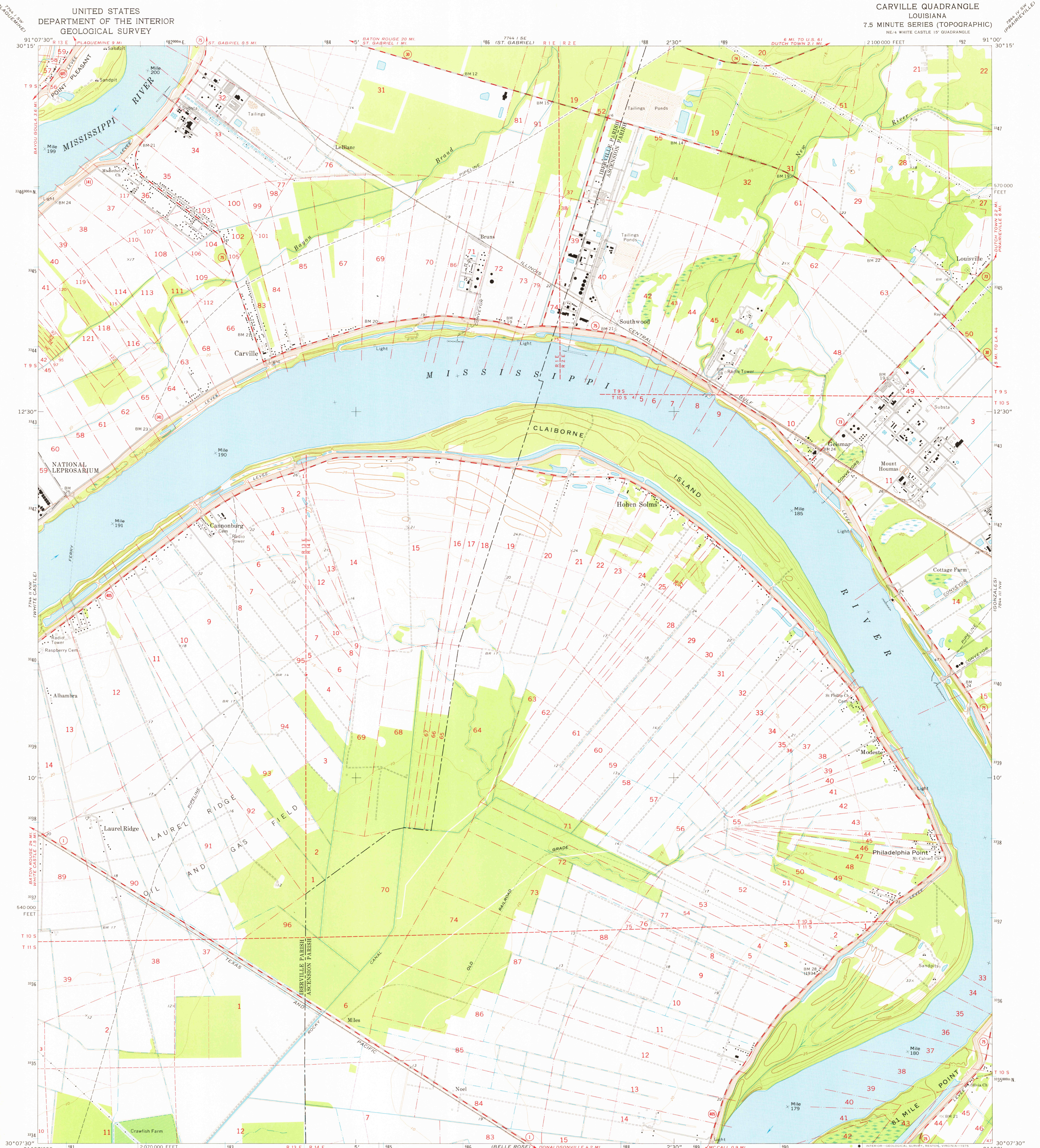
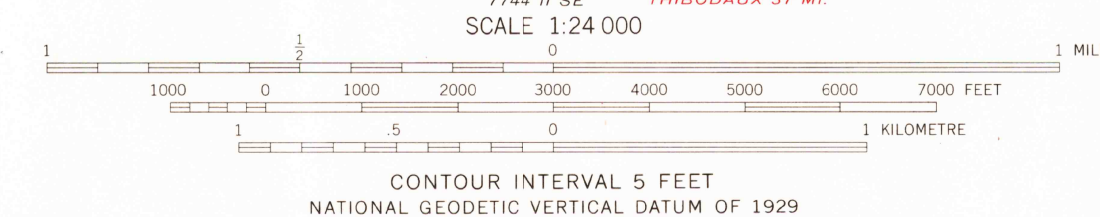
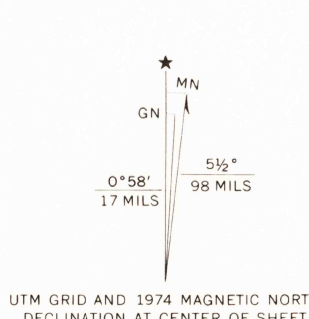


UNITED STATES
DEPARTMENT OF THE INTERIOR
GEOLOGICAL SURVEY

CARVILLE QUADRANGLE
LOUISIANA
7.5 MINUTE SERIES (TOPOGRAPHIC)
NE/4 WHITE CASTLE 15' QUADRANGLE



Mapped, edited, and published by the Geological Survey
Control by USGS and NOS/NOAA
Planimetry by photogrammetric methods from aerial photographs
taken 1951. Topography by planetable surveys 1953. Revised
from aerial photographs taken 1973. Field checked 1974
Polyconic projection. 1927 North American datum
10,000-foot grid based on Louisiana coordinate system, south zone
1000-metre Universal Transverse Mercator grid ticks,
zone 15, shown in blue
All or part of this quadrangle lies within a subsidence area
Benchmarks have been adjusted to 1964 and 1969 leveling
unless otherwise indicated by parenthetical dates
Fine red dashed lines indicate selected fence and field lines where
generally visible on aerial photographs. This information is unchecked



ROAD CLASSIFICATION
Primary highway, hard surface
Secondary highway, hard surface
Unimproved road
Interstate Route
U. S. Route
State Route
Light-duty road, hard or improved surface

USGS
HISTORICAL FILE
TOPOGRAPHIC DIVISION
CARVILLE, LA.
NE/4 WHITE CASTLE 15' QUADRANGLE
N3007.5-W9100/7.5
1974
AMS 7744 II NE-SERIES V885

THIS MAP COMPLIES WITH NATIONAL MAP ACCURACY STANDARDS
FOR SALE BY U. S. GEOLOGICAL SURVEY, DENVER, COLORADO 80225, OR RESTON, VIRGINIA 22092
AND BY THE STATE OF LOUISIANA, DEPARTMENT OF PUBLIC WORKS, BATON ROUGE, LOUISIANA 70804
A FOLDER DESCRIBING TOPOGRAPHIC MAPS AND SYMBOLS IS AVAILABLE ON REQUEST

DEC 18 1975