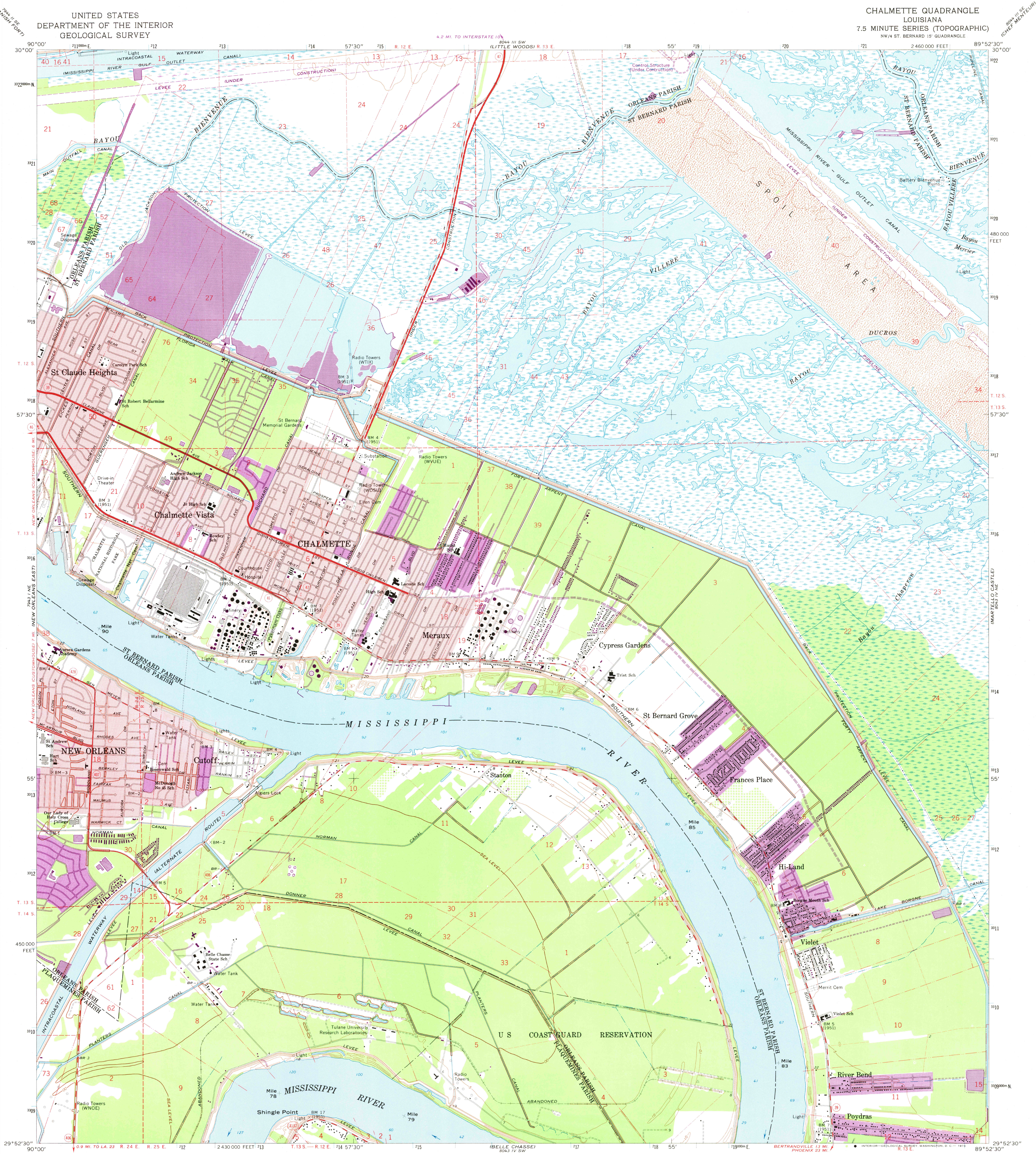
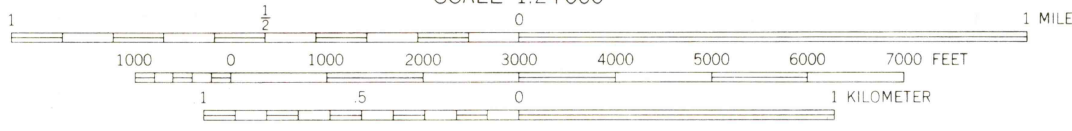
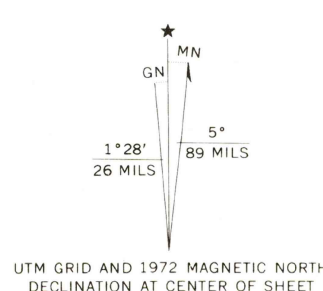


UNITED STATES  
DEPARTMENT OF THE INTERIOR  
GEOLOGICAL SURVEY

CHALMETTE QUADRANGLE  
LOUISIANA  
7.5 MINUTE SERIES (TOPOGRAPHIC)  
NW/4 ST. BERNARD 15' QUADRANGLE



Maped, printed, and published by the Geological Survey  
Control by USGS, USC&GS, and Louisiana Geodetic Survey  
Planimetry by photogrammetric methods from aerial photographs taken 1964  
Topography by planimetric surveys 1967. Supersedes map dated 1936-51  
Selected hydrographic data compiled from USC&GS Chart 1271 (1966)  
This information is not intended for navigational purposes  
Polyconic projection. 1927 North American datum  
10,000-foot grid based on Louisiana coordinate system, south zone  
1000-meter Universal Transverse Mercator grid ticks,  
zone 16, shown in blue  
Red tint indicates areas in which only landmark buildings are shown  
City of New Orleans and Orleans Parish are coextensive  
All or part of this quadrangle lies within a subsidence area  
Bench marks have been adjusted to 1964 leveling unless otherwise  
indicated by parenthetical dates  
Fine red dashed lines indicate selected fence and field lines where  
generally visible on aerial photographs. This information is unchecked



CONTOUR INTERVAL 5 FEET  
DATUM IS MEAN SEA LEVEL  
SOUNDINGS IN FEET—DATUM IS MEAN LOW WATER  
SHORELINE SHOWN REPRESENTS THE APPROXIMATE LINE OF MEAN HIGH WATER  
THE MEAN RANGE OF TIDE IS APPROXIMATELY 1/2 FOOT

THIS MAP COMPLIES WITH NATIONAL MAP ACCURACY STANDARDS  
FOR SALE BY U.S. GEOLOGICAL SURVEY, DENVER, COLORADO 80225, OR WASHINGTON, D.C. 20242  
AND BY THE STATE OF LOUISIANA, DEPARTMENT OF PUBLIC WORKS, BATON ROUGE, LOUISIANA 70804  
A FOLDER DESCRIBING TOPOGRAPHIC MAPS AND SYMBOLS IS AVAILABLE ON REQUEST



ROAD CLASSIFICATION  
Heavy-duty ——— Light-duty ———  
Medium-duty ——— Unimproved dirt ———  
State Route

USGS  
Historical File  
Topographic Division

NOV 13 1973  
CHALMETTE, LA.  
NW/4 ST. BERNARD 15' QUADRANGLE  
N2952.5—W8952.5/7.5  
1967  
PHOTOREVISED 1972  
AMS 8043 IV NW—SERIES V885

Revisions shown in purple compiled from aerial photographs  
taken 1972. This information not field checked  
Purple tint indicates extension of urban areas