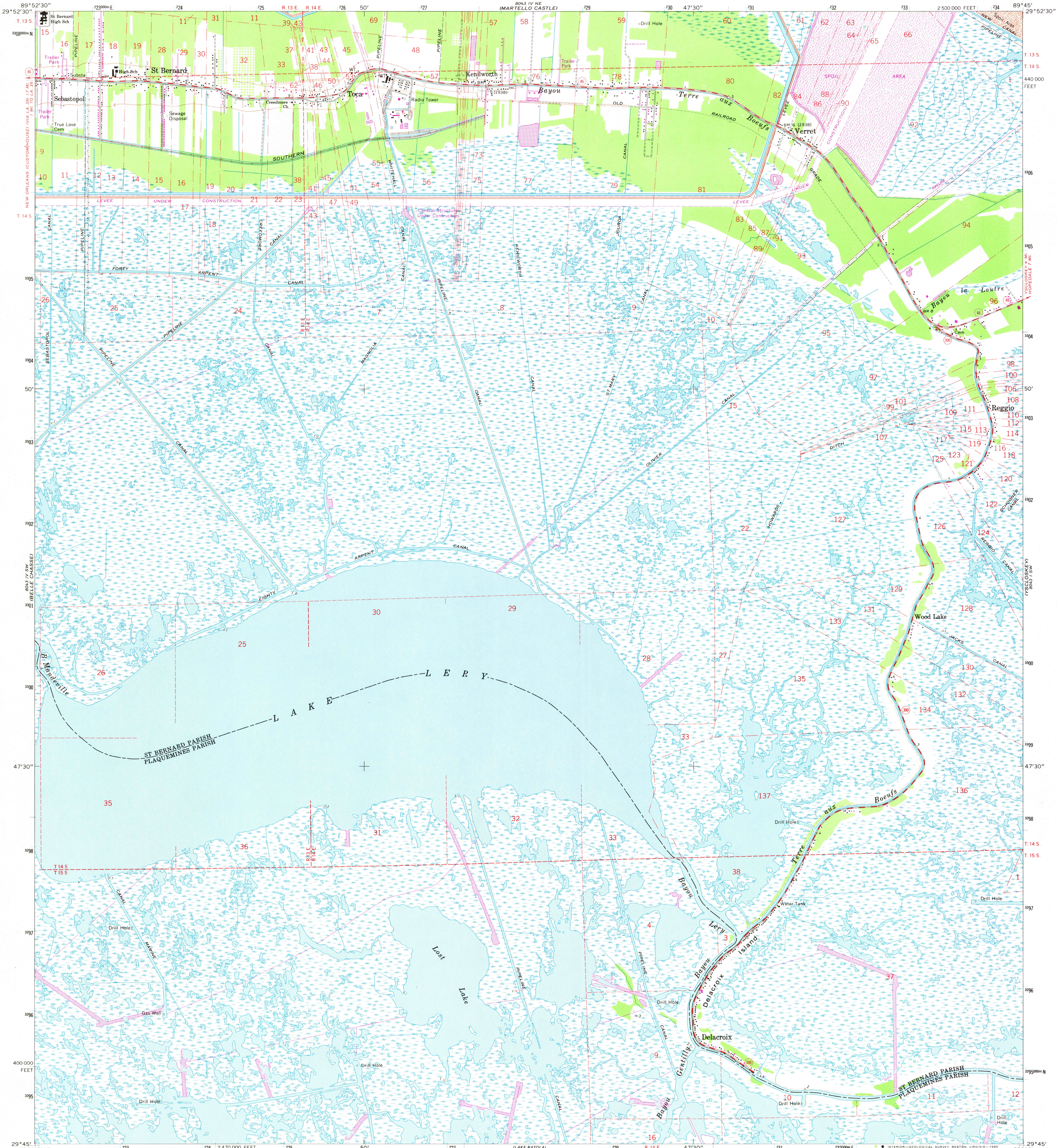


UNITED STATES
DEPARTMENT OF THE INTERIOR
GEOLOGICAL SURVEY

DELACROIX QUADRANGLE
LOUISIANA
7.5 MINUTE SERIES (TOPOGRAPHIC)
SE/4 ST. BERNARD 15' QUADRANGLE



Mapped, edited, and published by the Geological Survey
Control by USGS, USC&GS, and Louisiana Geodetic Survey
Planimetry by photogrammetric methods from aerial photographs
taken 1965. Topography by planetable surveys 1967
Supersedes map dated 1938-51
Polyconic projection. 1927 North American datum
10,000-foot grid based on Louisiana coordinate system, south zone
1000-meter Universal Transverse Mercator grid ticks,
zone 16, shown in blue
Where omitted, land lines have not been established
or are not shown because of insufficient data
All or part of this quadrangle lies within a subsidence area
Bench marks have been adjusted to 1964 leveling unless otherwise
indicated by parenthetical dates

UTM GRID AND 1979 MAGNETIC NORTH
DECLINATION AT CENTER OF SHEET
To place on the predicted North American Datum 1983
move the projection lines 19 meters south and
7 meters east as shown by dashed corner ticks

SCALE 1:24,000
CONTOUR INTERVAL 5 FEET
NATIONAL GEODETIC VERTICAL DATUM OF 1929

THIS MAP COMPLIES WITH NATIONAL MAP ACCURACY STANDARDS
FOR SALE BY U.S. GEOLOGICAL SURVEY, DENVER, COLORADO 80225, OR RESTON, VIRGINIA 22092
AND STATE OF LOUISIANA, DEPARTMENT OF PUBLIC WORKS, BATON ROUGE, LOUISIANA 70804
A FOLDER DESCRIBING TOPOGRAPHIC MAPS AND SYMBOLS IS AVAILABLE ON REQUEST

Revisions shown in purple and woodland compiled
from aerial photographs taken 1972 and 1978. Map
edited 1979. This information not field checked

ROAD CLASSIFICATION
Medium-duty ——— Light-duty ———
Unimproved dirt ———
State Route

DELACROIX, LA.
SE/4 ST. BERNARD 15' QUADRANGLE
N2945-W8945/7.5
1967
PHOTOREVIEWED 1972 AND 1979
DMA 8043 IV SE-SERIES V885

15/16