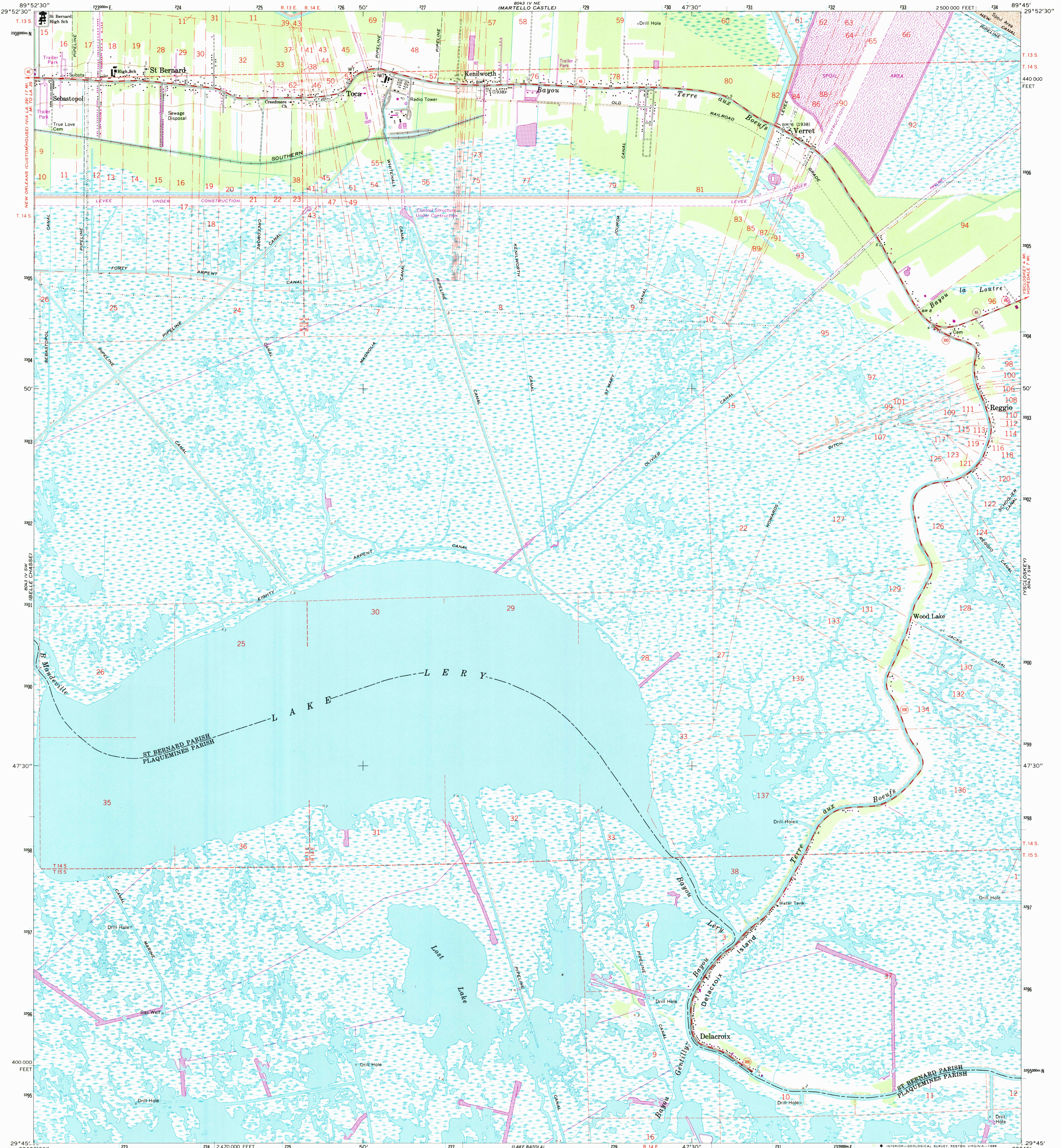


UNITED STATES
DEPARTMENT OF THE INTERIOR
GEOLOGICAL SURVEY

DELA CROIX QUADRANGLE
LOUISIANA
7.5 MINUTE SERIES (TOPOGRAPHIC)
SE/4 ST. BERNARD 15' QUADRANGLE



Mapped, edited, and published by the Geological Survey
Control by USGS, USC&GS, and Louisiana Geodetic Survey
Planimetry by photogrammetric methods from aerial photographs taken 1965. Topography by planetable surveys 1967
Supersedes map dated 1938-51
Polyconic projection. 1927 North American datum
10,000-foot grid based on Louisiana coordinate system, south zone
1000-meter Universal Transverse Mercator grid ticks, zone 16, shown in blue
Where omitted, land lines have not been established or are not shown because of insufficient data
All or part of this quadrangle lies within a subsidence area
Bench marks have been adjusted to 1964 leveling unless otherwise indicated by parenthetical dates
Map photoinspected 1983
No major culture or drainage changes observed

To place on the predicted North American Datum 1983
move the projection lines 19 meters south and
7 meters east as shown by dashed corner ticks

SCALE 1:24,000
CONTOUR INTERVAL 5 FEET
NATIONAL GEODETIC VERTICAL DATUM OF 1929

THIS MAP COMPLIES WITH NATIONAL MAP ACCURACY STANDARDS
FOR SALE BY U. S. GEOLOGICAL SURVEY, DENVER, COLORADO 80225, OR RESTON, VIRGINIA 22092
AND STATE OF LOUISIANA, DEPARTMENT OF PUBLIC WORKS, BATON ROUGE, LOUISIANA 70804
A FOLDER DESCRIBING TOPOGRAPHIC MAPS AND SYMBOLS IS AVAILABLE ON REQUEST

Revisions shown in purple and woodland corrected
from aerial photographs taken 1972 and 1978. Map
edited 1979. This information not field checked



QUADRANGLE LOCATION

ROAD CLASSIFICATION
Medium-duty
Light-duty
Unimproved dirt
State Route

OCT 11 1989
REC'D FILE COPY

DELA CROIX, LA.
SE/4 ST. BERNARD 15' QUADRANGLE
29089-G7-TF-024
PHOTOINSPECTED 1983
1967
PHOTOREVISED 1972 AND 1979
DMA 8043 IV SE-SERIES Y885