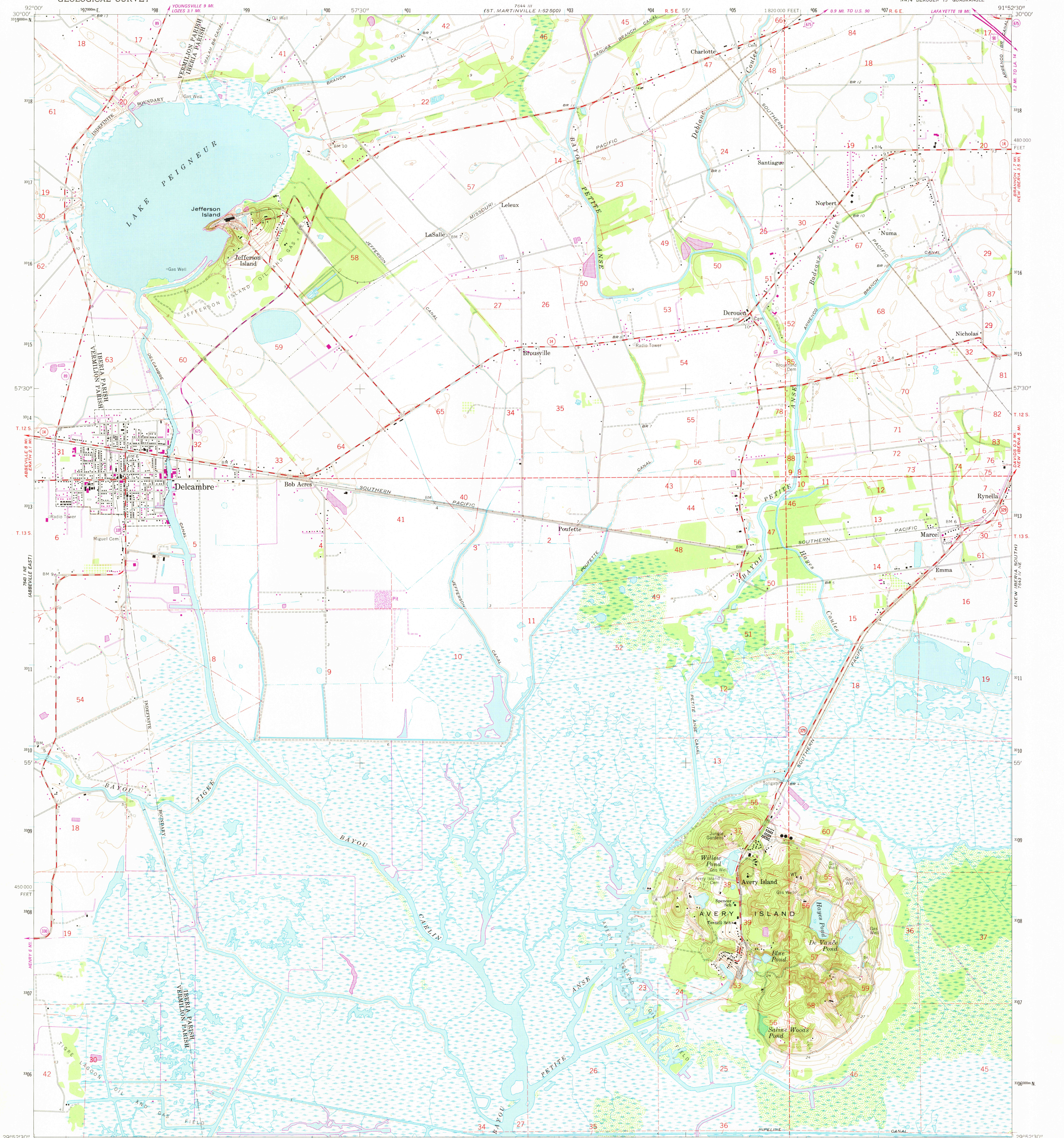


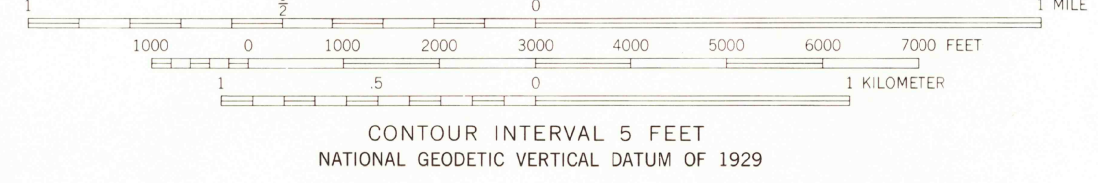
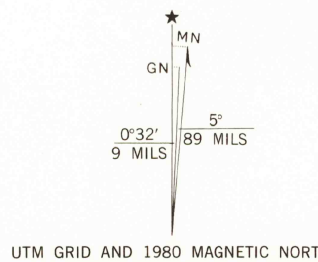
UNITED STATES  
DEPARTMENT OF THE INTERIOR  
GEOLOGICAL SURVEY

DEL CAMBRE QUADRANGLE  
LOUISIANA  
7.5 MINUTE SERIES (TOPOGRAPHIC)  
NW/4 DEROUEN 15' QUADRANGLE

744 III  
ST. MARTINVILLE  
1:62,500



Mapped, edited, and published by the Geological Survey  
Control by USGS, USC&GS, and Louisiana Geodetic Survey  
Topography by photogrammetric methods from aerial  
photographs taken 1962 and planetable surveys 1963  
Polyconic projection. 1927 North American datum  
10,000-foot grid based on Louisiana coordinate system, south zone  
1000-meter Universal Transverse Mercator grid ticks,  
zone 15, shown in blue  
Where omitted, land lines have not been established  
or are not shown because of insufficient data  
To place on the predicted North American Datum 1983  
move the projection lines 19 meters south and  
12 meters east as shown by dashed corner ticks  
All or part of this quadrangle lies within a subsidence area  
Revisions shown in purple compiled from aerial photographs  
taken 1978. Map edited 1980. This information not field checked



THIS MAP COMPLIES WITH NATIONAL MAP ACCURACY STANDARDS  
FOR SALE BY U. S. GEOLOGICAL SURVEY, DENVER, COLORADO 80225, OR RESTON, VIRGINIA 22092  
AND STATE OF LOUISIANA, DEPARTMENT OF PUBLIC WORKS, BATON ROUGE, LOUISIANA 70804  
A FOLDER DESCRIBING TOPOGRAPHIC MAPS AND SYMBOLS IS AVAILABLE ON REQUEST



ROAD CLASSIFICATION	
Primary highway, hard surface	Light-duty road, hard or improved surface
Secondary highway, hard surface	Unimproved road
Interstate Route	U. S. Route
	State Route

DEL CAMBRE, LA.  
NW/4 DEROUEN 15' QUADRANGLE  
N2952.5—W9152.5/7.5  
1963  
DMA 7643 IV NW—SERIES Y885

USGS  
HISTORICAL FILE  
NATIONAL MAPPING DIVISION

MAY 28 1981  
2250