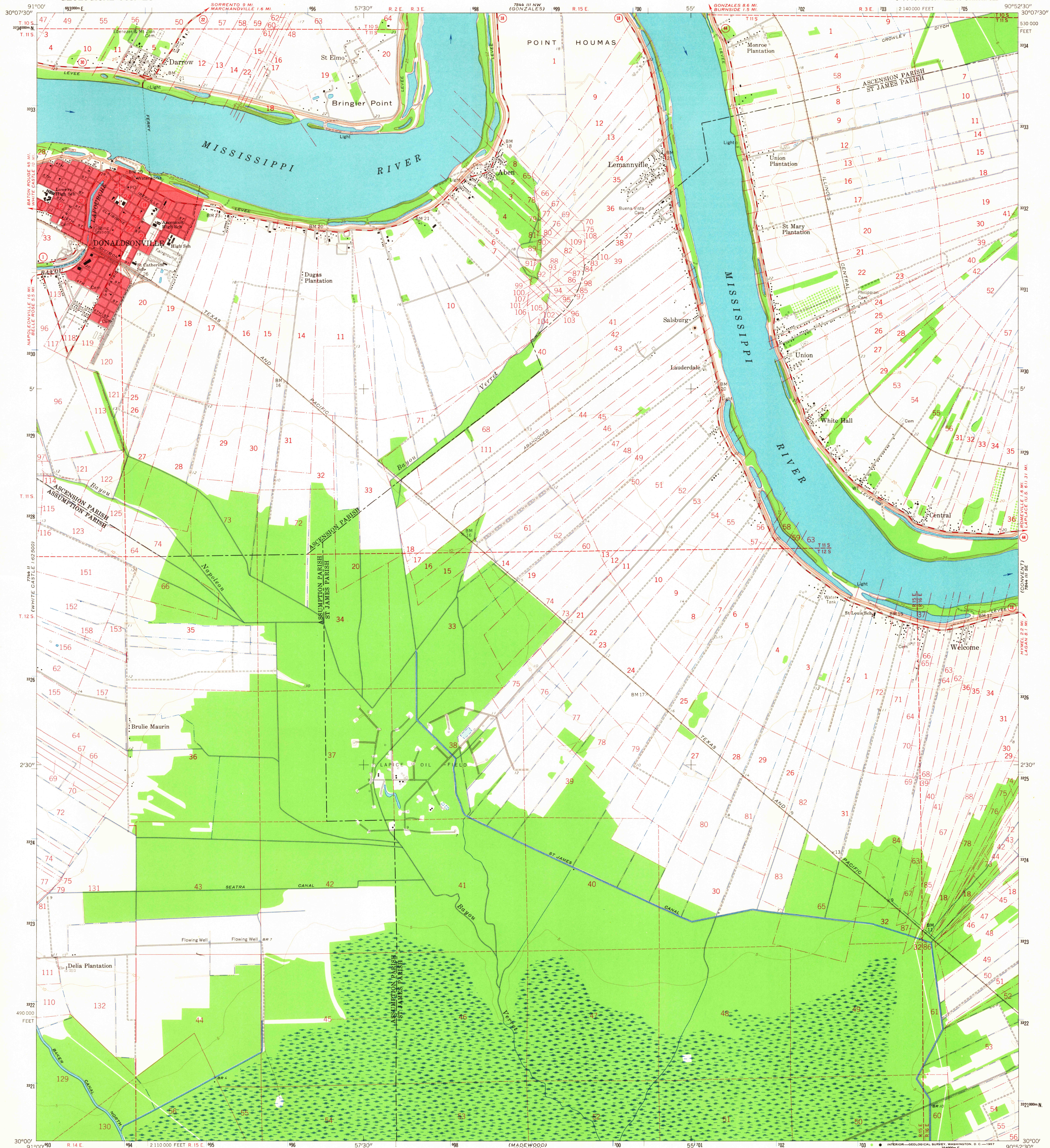


UNITED STATES
DEPARTMENT OF THE INTERIOR
GEOLOGICAL SURVEY

DONALDSONVILLE QUADRANGLE
LOUISIANA

7.5 MINUTE SERIES (TOPOGRAPHIC)

SW 1/4 DONALDSONVILLE 15' QUADRANGLE



Mapped, edited, and published by the Geological Survey

Control by USGS, USC&GS, and USCE

Planimetry by photogrammetric methods from aerial photographs

taken 1961. Topography by planetable surveys 1962

Polyconic projection. 1927 North American datum

10,000-foot grid based on Louisiana coordinate system, south zone

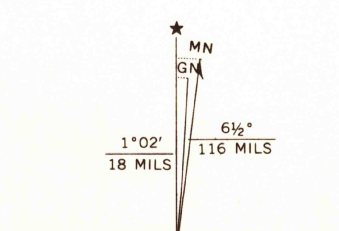
1000-meter Universal Transverse Mercator grid ticks,

zone 15, shown in blue

Red tint indicates area in which only landmark buildings are shown

Fine red dashed lines indicate selected fence and field lines where

generally visible on aerial photographs. This information is unchecked



THIS MAP COMPLIES WITH NATIONAL MAP ACCURACY STANDARDS
FOR SALE BY U. S. GEOLOGICAL SURVEY, DENVER, COLORADO 80225, OR WASHINGTON, D. C. 20242
AND BY THE STATE OF LOUISIANA, DEPARTMENT OF PUBLIC WORKS, BATON ROUGE, LOUISIANA 70804
A FOLDER DESCRIBING TOPOGRAPHIC MAPS AND SYMBOLS IS AVAILABLE ON REQUEST

USGS
Historical File
Topographic Division



ROAD CLASSIFICATION
Medium-duty — Light-duty
Unimproved dirt — State Route

DONALDSONVILLE, LA.
SW 1/4 DONALDSONVILLE 15' QUADRANGLE
N 3000—W 9052.5/7.5

1962

AMS 7844 III SW—SERIES V885