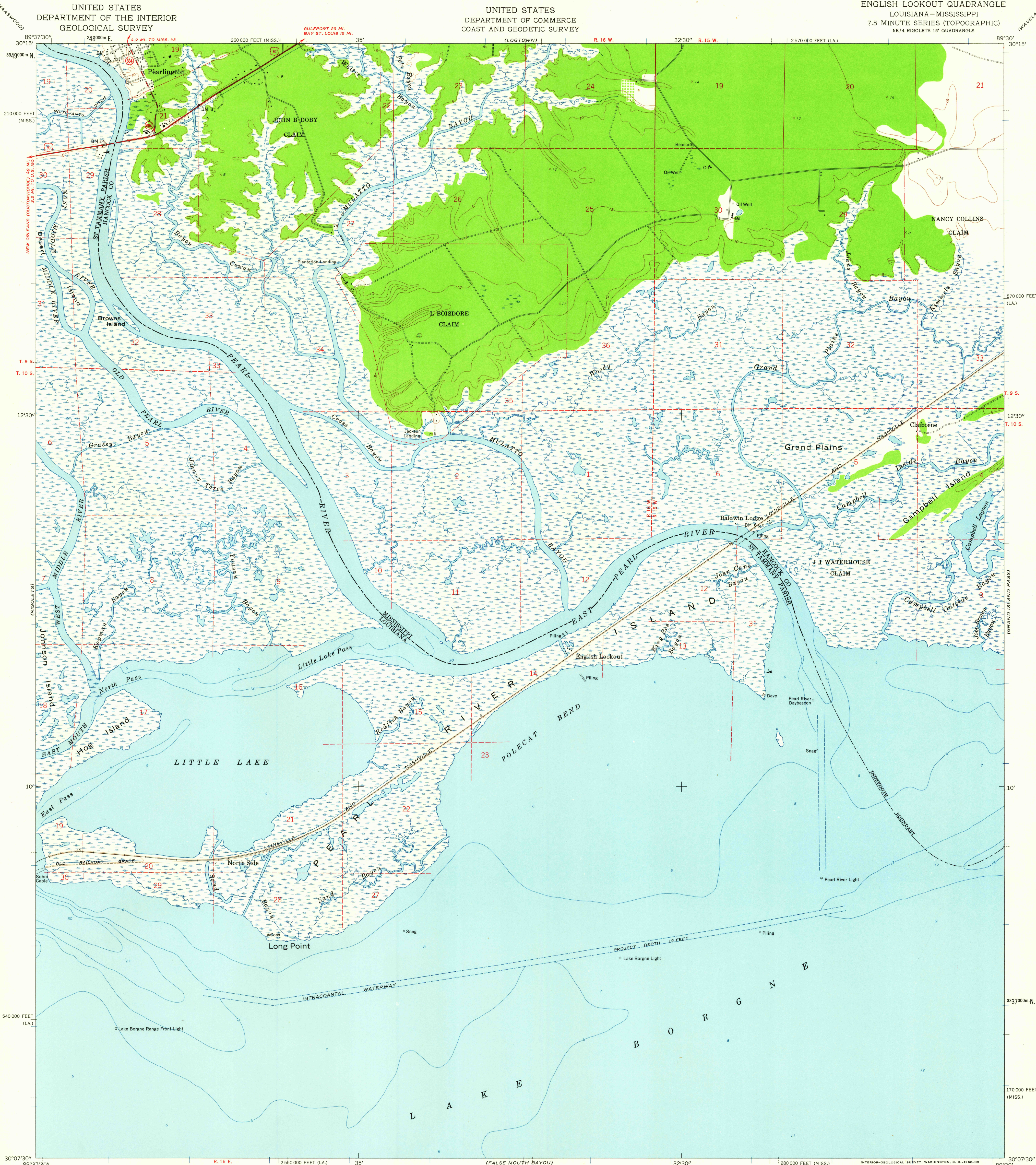


UNITED STATES  
DEPARTMENT OF THE INTERIOR  
GEOLOGICAL SURVEY

UNITED STATES  
DEPARTMENT OF COMMERCE  
COAST AND GEODETIC SURVEY

ENGLISH LOOKOUT QUADRANGLE  
LOUISIANA-MISSISSIPPI  
7.5 MINUTE SERIES (TOPOGRAPHIC)  
NE 1/4 RIGOLETS 15' QUADRANGLE



Maped by U.S. Coast and Geodetic Survey  
Edited and published by the Geological Survey  
Control by USC&GS and Louisiana Geodetic Survey  
Culture and drainage in part compiled from aerial photographs  
taken 1951 and 1955. Topography by planetable surveys 1952  
Field check 1956  
Hydrography compiled from USC&GS chart 878 (1957)  
Polyconic projection. 1927 North American datum  
10,000-foot grids based on Louisiana coordinate system, south zone,  
and Mississippi coordinate system, east zone  
1000-meter Universal Transverse Mercator grid ticks,  
zone 16, shown in blue  
Dashed land lines indicate approximate locations

TRUE NORTH  
MAGNETIC NORTH  
APPROXIMATE MEAN  
DECLINATION, 1956

SCALE 1:24000  
1 1000 0 1000 2000 3000 4000 5000 6000 7000 FEET  
1 5 10 15 20 KILOMETER  
CONTOUR INTERVAL 5 FEET  
DATUM IS MEAN SEA LEVEL  
DEPTH CURVES AND SOUNDINGS IN FEET—DATUM IS MEAN LOW WATER  
SHORELINE SHOWN REPRESENTS THE APPROXIMATE LINE OF MEAN HIGH WATER  
THE MEAN RANGE OF TIDE IS APPROXIMATE 1 FOOT

THIS MAP COMPLIES WITH NATIONAL MAP ACCURACY STANDARDS  
FOR SALE BY U. S. GEOLOGICAL SURVEY, DENVER 25, COLORADO OR WASHINGTON 25, D. C.  
AND BY THE STATE OF LOUISIANA, DEPARTMENT OF PUBLIC WORKS, BATON ROUGE 4, LOUISIANA  
A FOLDER DESCRIBING TOPOGRAPHIC MAPS AND SYMBOLS IS AVAILABLE ON REQUEST

USCS  
Historical File  
Topographic Division  
LOUISIANA  
QUADRANGLE LOCATION

U.S.G.S.  
FILE COPY  
TOPOGRAPHIC DIVISION

ROAD CLASSIFICATION USC&GS T-9790  
Heavy-duty ——— Light-duty ———  
Medium-duty ——— Unimproved dirt ———  
U. S. Route ——— State Route ———  
ENGLISH LOOKOUT, LA.—MISS.  
NE 1/4 RIGOLETS 15' QUADRANGLE  
N 3007.5—W 8930/7.5  
1956  
FEB - 4 1960