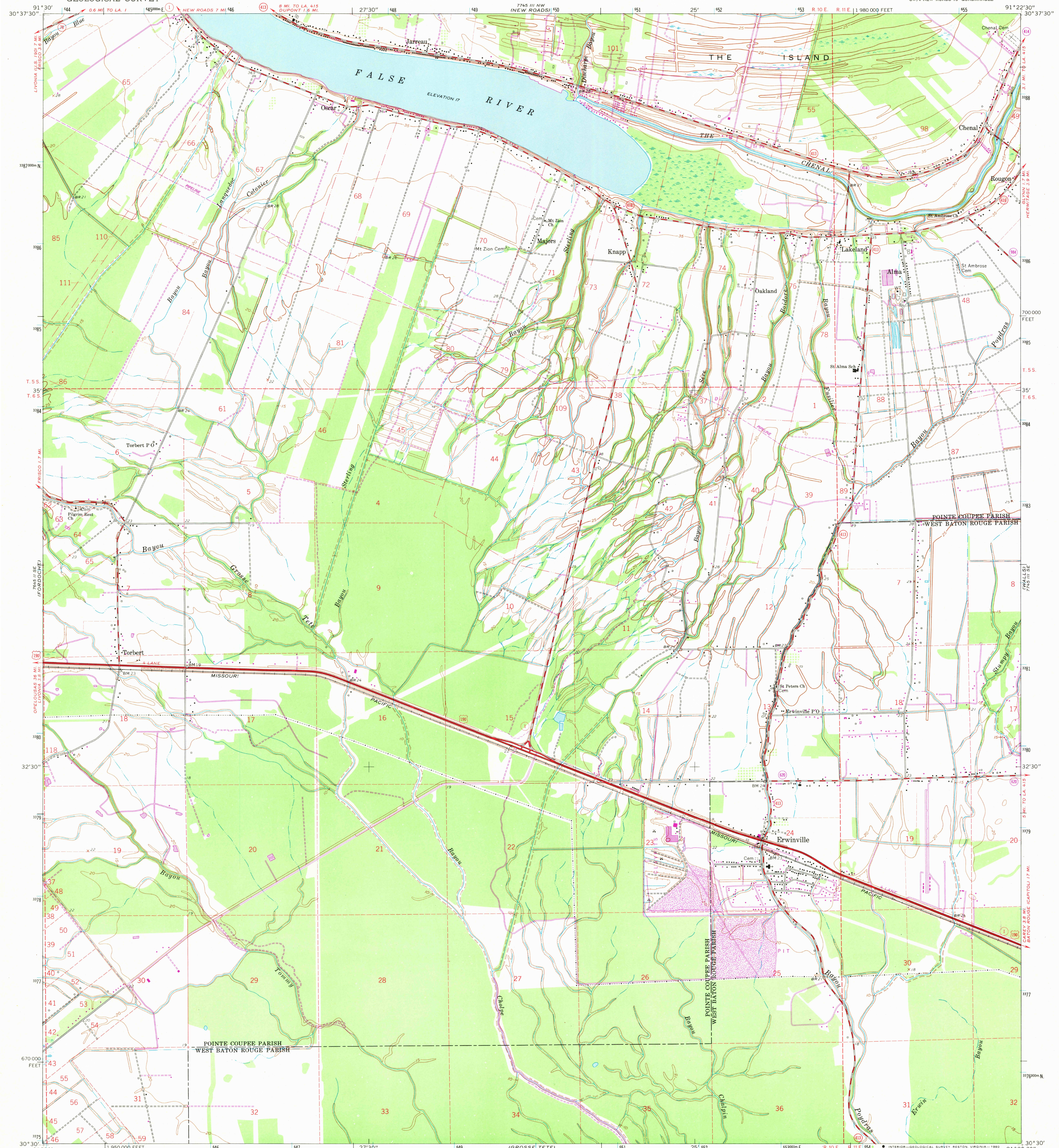


UNITED STATES
DEPARTMENT OF THE INTERIOR
GEOLOGICAL SURVEY

ERWINVILLE QUADRANGLE
LOUISIANA
7.5 MINUTE SERIES (TOPOGRAPHIC)
SW/4 NEW ROADS 15' QUADRANGLE



Mapped, edited, and published by the Geological Survey

Control by USGS and USC&GS

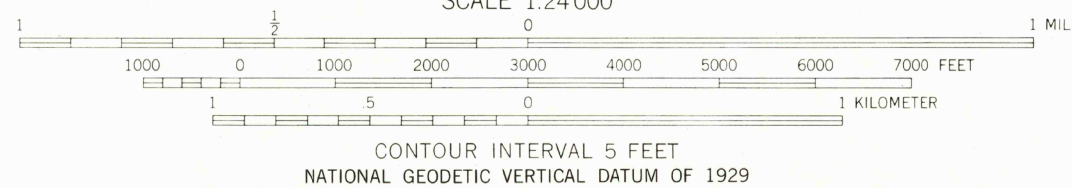
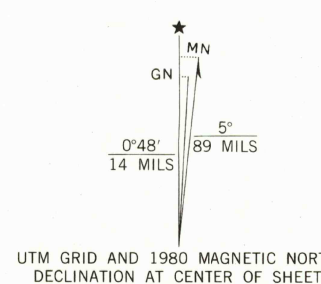
Planimetry by photogrammetric methods from aerial photographs taken 1952. Topography by planetable surveys 1954. Revised 1962

Polyconic projection. 1927 North American datum 10,000-foot grid based on Louisiana coordinate system, south zone 1000-meter Universal Transverse Mercator grid ticks, zone 15, shown in blue

Fine red dashed lines indicate selected fence and field lines where generally visible on aerial photographs. This information is unchecked

To place on the predicted North American Datum 1983 move the projection lines 17 meters south and 11 meters east as shown by dashed corner ticks

Revisions shown in purple and woodland compiled from aerial photographs taken 1978. Map edited 1980. This information not field checked



THIS MAP COMPLIES WITH NATIONAL MAP ACCURACY STANDARDS
FOR SALE BY U. S. GEOLOGICAL SURVEY, DENVER, COLORADO 80225, OR RESTON, VIRGINIA 22092
AND STATE OF LOUISIANA, DEPARTMENT OF PUBLIC WORKS, BATON ROUGE, LOUISIANA 70804
A FOLDER DESCRIBING TOPOGRAPHIC MAPS AND SYMBOLS IS AVAILABLE ON REQUEST



USGS
Historical File
Topographic Division

ROAD CLASSIFICATION
Heavy-duty ——— Light-duty ———
Medium-duty ——— Unimproved dirt ———
U.S. Route ——— State Route ———

ERWINVILLE, LA.
SW/4 NEW ROADS 15' QUADRANGLE
N3030—W9122.5/7.5

1962
PHOTOREVISED 1980
DMA 7745 III SW—SERIES V885

OCT 29 1980

1900