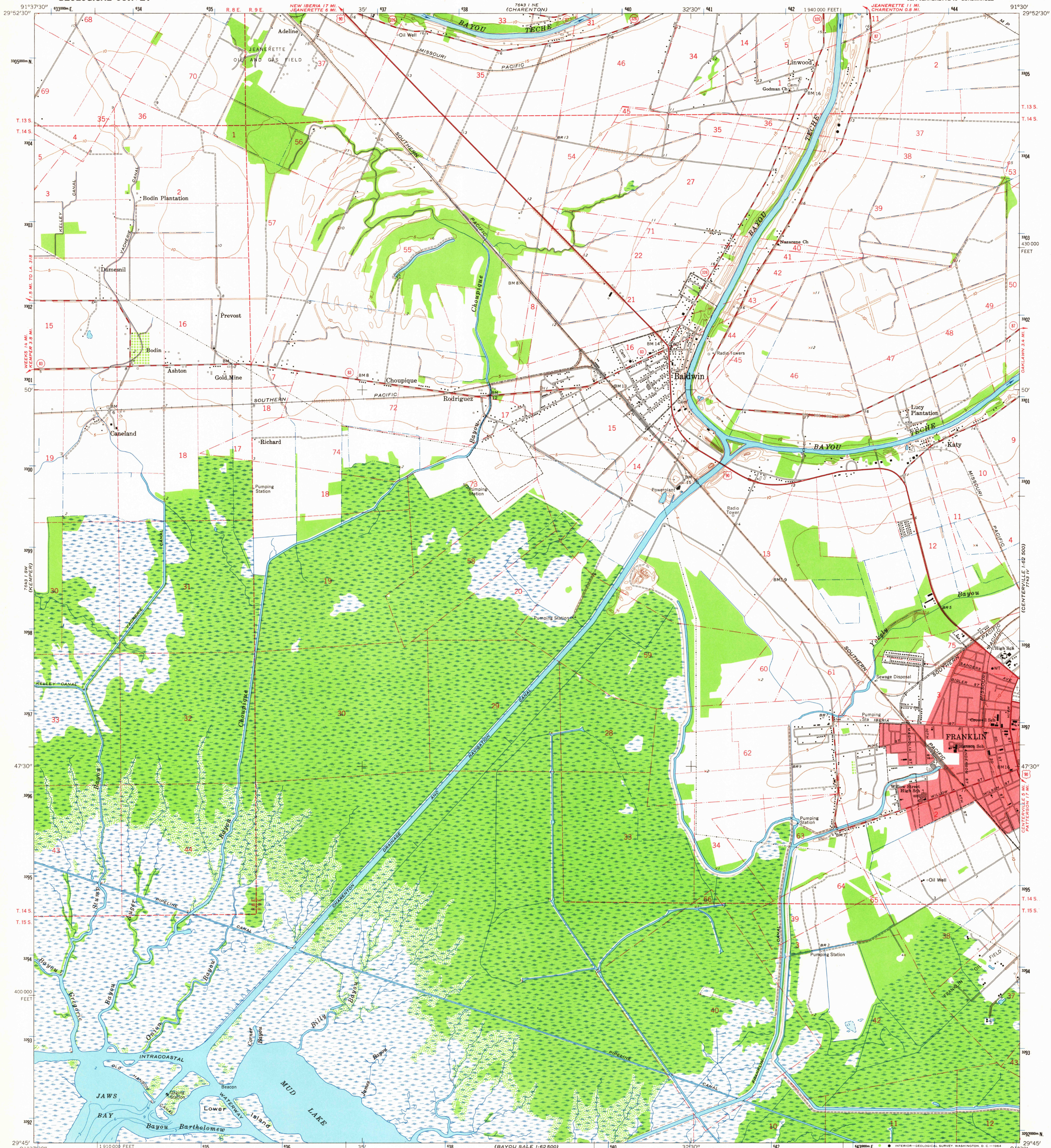
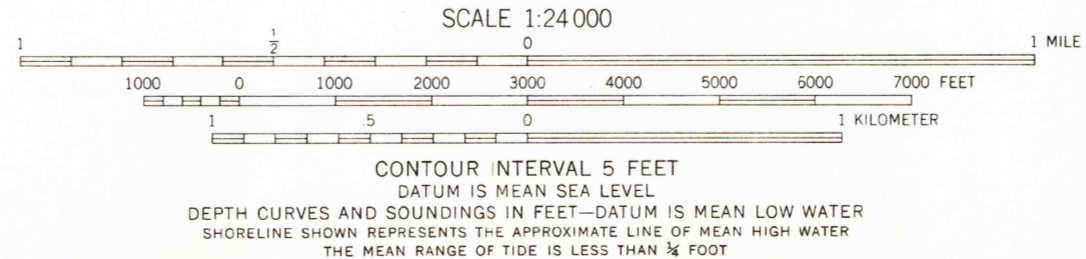
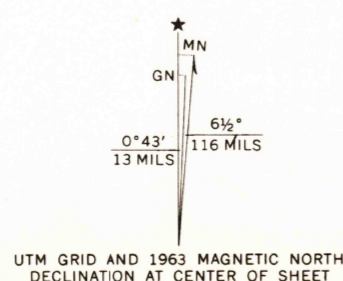


UNITED STATES
DEPARTMENT OF THE INTERIOR
GEOLOGICAL SURVEY

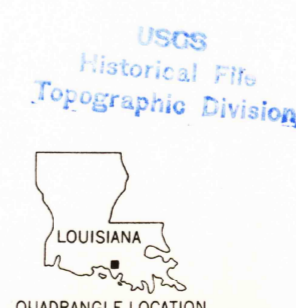
FRANKLIN QUADRANGLE
LOUISIANA—ST MARY PARISH
7.5 MINUTE SERIES (TOPOGRAPHIC)
SE/4 JEANERETTE 15' QUADRANGLE



Mapped, edited, and published by the Geological Survey
Control by USGS, USC&GS, and Louisiana Geodetic Survey
Planimetry by photogrammetric methods from aerial photographs
taken 1962. Topography by planetable surveys 1963
Selected hydrographic data compiled from USC&GS chart 882 (1954)
This information is not intended for navigational purposes
Polyconic projection. 1927 North American datum
10,000-foot grid based on Louisiana coordinate system, south zone
1000-meter Universal Transverse Mercator grid ticks,
zone 15, shown in blue
Red tint indicates area in which only landmark buildings are shown
Where omitted, land lines have not been established
Fine red dashed lines indicate selected fence and field lines where
generally visible on aerial photographs. This information is unchecked



THIS MAP COMPLIES WITH NATIONAL MAP ACCURACY STANDARDS
FOR SALE BY U.S. GEOLOGICAL SURVEY, DENVER 25, COLORADO OR WASHINGTON 25, D.C.
AND BY THE STATE OF LOUISIANA, DEPARTMENT OF PUBLIC WORKS, BATON ROUGE 4, LOUISIANA
A FOLDER DESCRIBING TOPOGRAPHIC MAPS AND SYMBOLS IS AVAILABLE ON REQUEST



ROAD CLASSIFICATION	
Heavy-duty	Light-duty
Medium-duty	Unimproved dirt
U. S. Route	State Route

U.S.G.S.
FILE COPY
TOPOGRAPHIC DIVISION

FRANKLIN, LA.
SE/4 JEANERETTE 15' QUADRANGLE
N2945—W9130/7.5
1963
AMS 7643 1 SE—SERIES V885

2640
JUN 25 1964