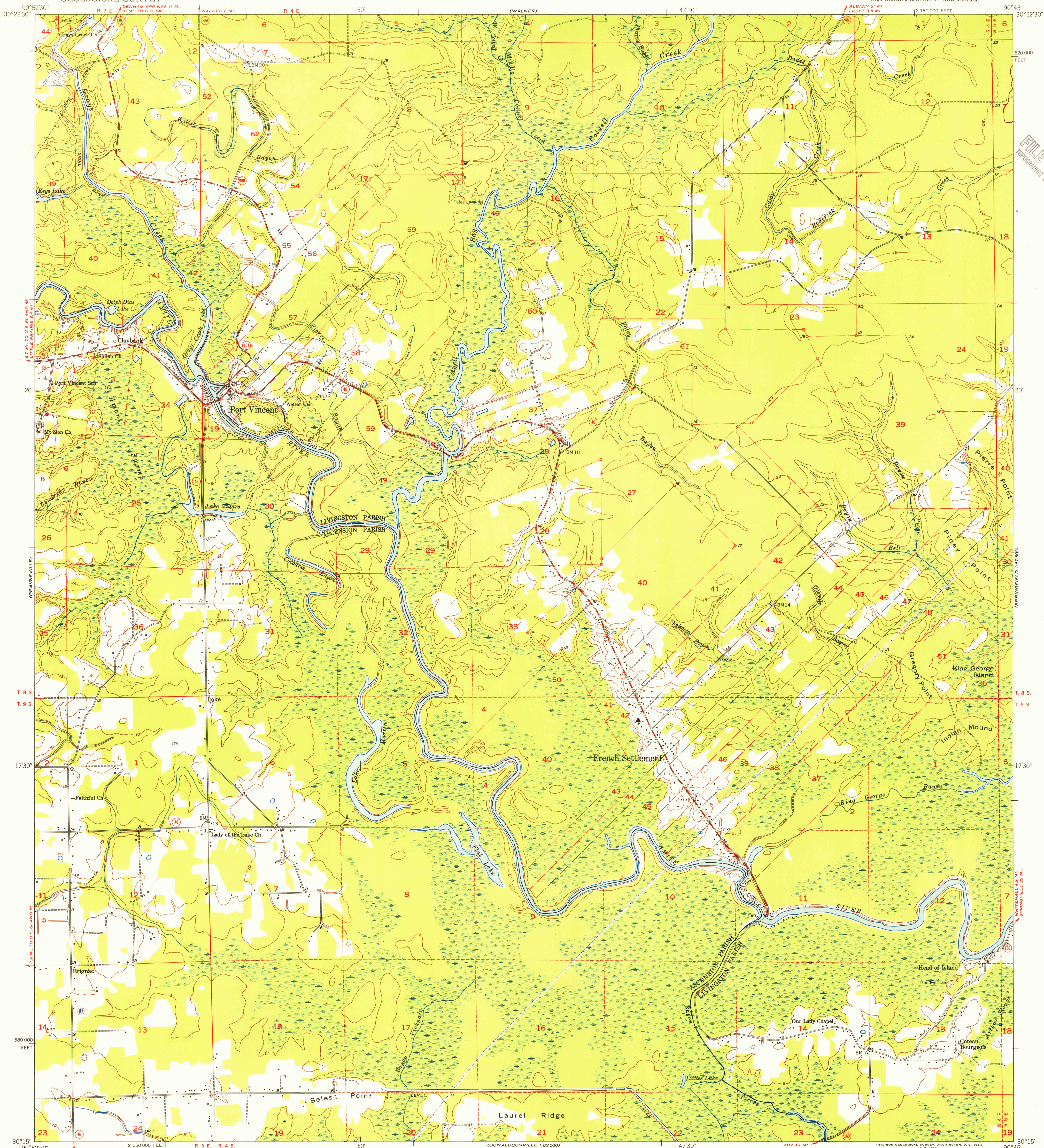


UNITED STATES
DEPARTMENT OF THE INTERIOR
GEOLOGICAL SURVEY

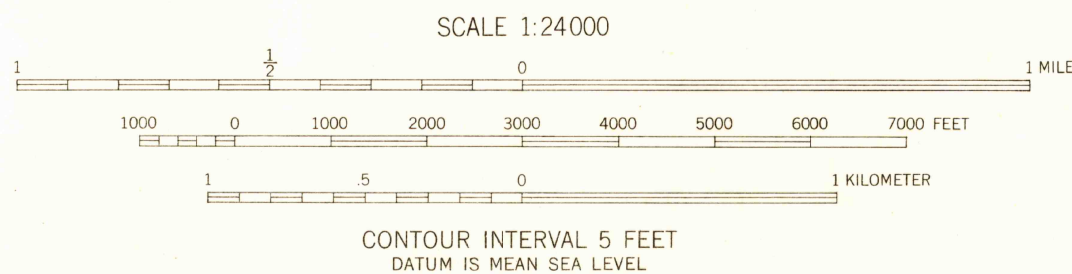
FRENCH SETTLEMENT QUADRANGLE

LOUISIANA
7.5 MINUTE SERIES (TOPOGRAPHIC)
SE/4 DENHAM SPRINGS 15' QUADRANGLE



Mapped, edited, and published by the Geological Survey
Control by USGS and USCGS
Culture and drainage in part compiled from aerial photographs
taken 1952. Topography by plane-table surveys 1952-1953
Polyconic projection. 1927 North American datum
10,000-foot grid based on Louisiana coordinate system,
south zone
Dashed land lines indicate approximate locations

TRUE NORTH
MAGNETIC NORTH
APPROXIMATE MEAN
DECLINATION, 1953



THIS MAP COMPLIES WITH NATIONAL MAP ACCURACY STANDARDS
FOR SALE BY U. S. GEOLOGICAL SURVEY, FEDERAL CENTER, DENVER, COLORADO OR WASHINGTON 25, D. C.
AND BY THE STATE OF LOUISIANA, DEPARTMENT OF PUBLIC WORKS, BATON ROUGE 4, LOUISIANA
A FOLDER DESCRIBING TOPOGRAPHIC MAPS AND SYMBOLS IS AVAILABLE ON REQUEST



QUADRANGLE LOCATION

ROAD CLASSIFICATION
Heavy-duty 4 LANE 16 LANE Light-duty
Medium-duty 4 LANE 16 LANE Unimproved dirt
U. S. Route State Route

U.S.G.S.
FILE COPY
TOPOGRAPHIC DIVISION

FRENCH SETTLEMENT, LA.
SE/4 DENHAM SPRINGS 15' QUADRANGLE
N3015-W9045/7.5

1953

SEP 21 1954
2595