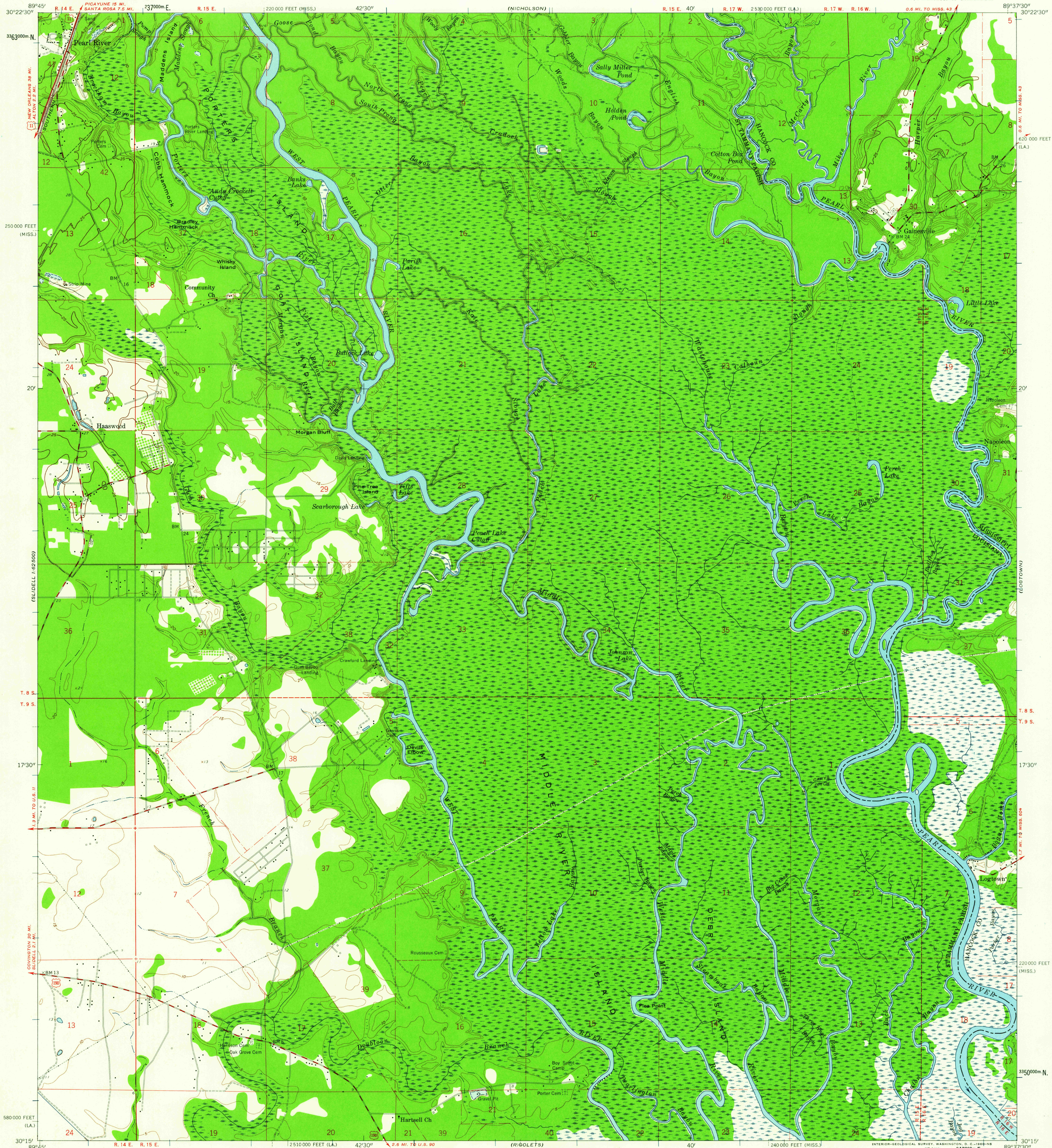


UNITED STATES
DEPARTMENT OF THE INTERIOR
GEOLOGICAL SURVEY

HAASWOOD QUADRANGLE
LOUISIANA—MISSISSIPPI
7.5 MINUTE SERIES (TOPOGRAPHIC)
SW/4 NICHOLSON 15' QUADRANGLE



Mapped, edited, and published by the Geological Survey

Control by USGS and USC&GS

Culture and drainage in part compiled from aerial photographs taken 1954. Topography by planimetric surveys 1955 and 1957-1959

Polycyclic projection. 1927 North American datum 10,000-foot grids based on Louisiana coordinate system, south zone, and Mississippi coordinate system, east zone 1000-meter Universal Transverse Mercator grid ticks, zone 16, shown in blue

Dashed land lines indicate approximate locations

TRUE NORTH
MAGNETIC NORTH
APPROXIMATE MEAN
DECLINATION, 1959

SCALE 1:24,000
1 0 1000 2000 3000 4000 5000 6000 7000 FEET
1 0 5 10 KILOMETER
CONTOUR INTERVAL 5 FEET
DATUM IS MEAN SEA LEVEL

THIS MAP COMPLIES WITH NATIONAL MAP ACCURACY STANDARDS
FOR SALE BY U. S. GEOLOGICAL SURVEY, DENVER 25, COLORADO OR WASHINGTON 25, D. C.
AND BY THE STATE OF LOUISIANA, DEPARTMENT OF PUBLIC WORKS, BATON ROUGE 4, LOUISIANA
A FOLDER DESCRIBING TOPOGRAPHIC MAPS AND SYMBOLS IS AVAILABLE ON REQUEST

USGS
Historical File
Topographic Division



ROAD CLASSIFICATION
Heavy-duty ——— Light-duty ———
Medium-duty ——— Unimproved dirt ———
U. S. Route

U.S.G.S.
FILE COPY
TOPOGRAPHIC DIVISION

HAASWOOD, LA.—MISS.

SW/4 NICHOLSON 15' QUADRANGLE
N 3015—W 8937.5/7.5

1959

JUN - 2 1959

2040