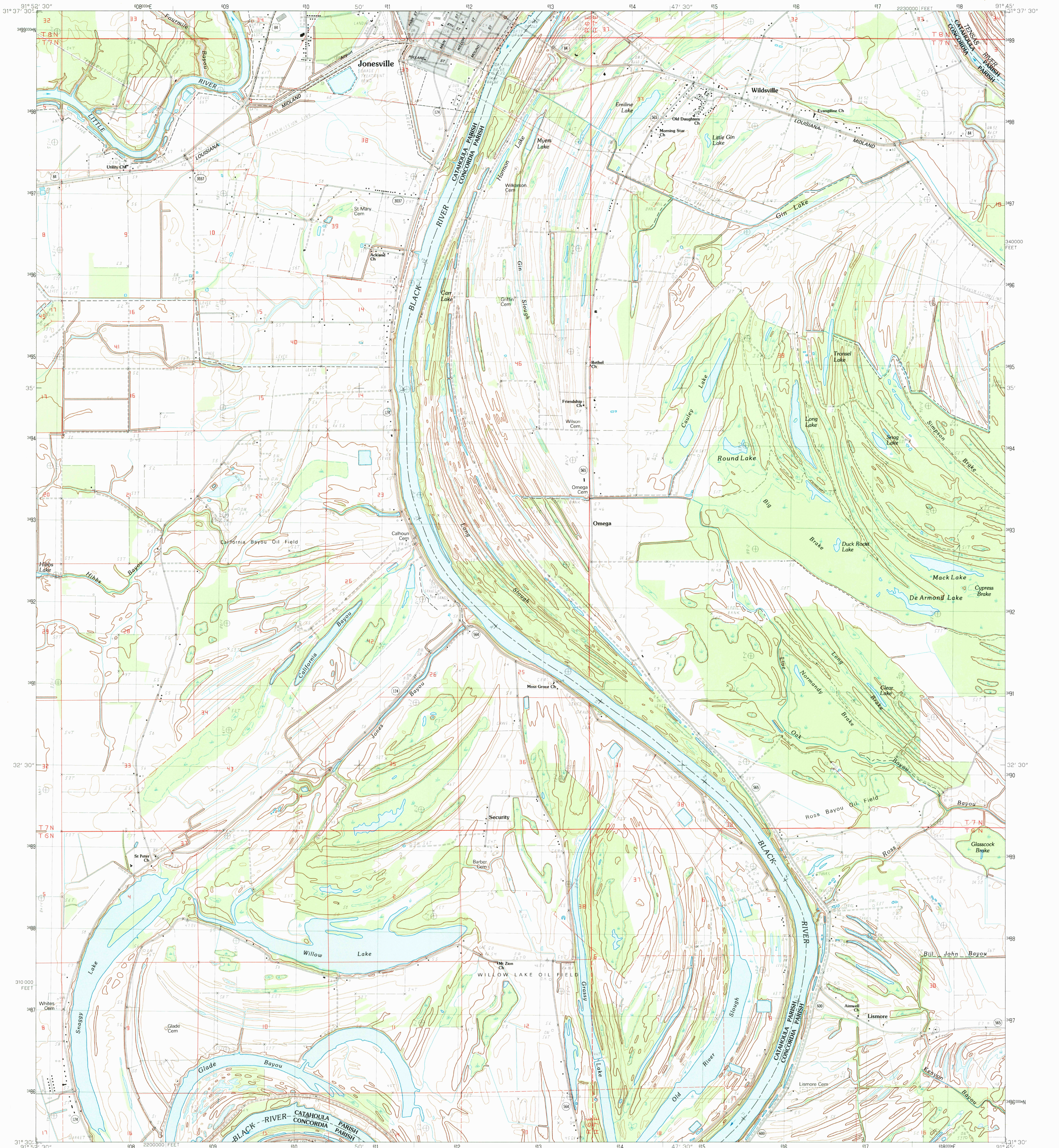


UNITED STATES
DEPARTMENT OF THE INTERIOR
GEOLOGICAL SURVEY

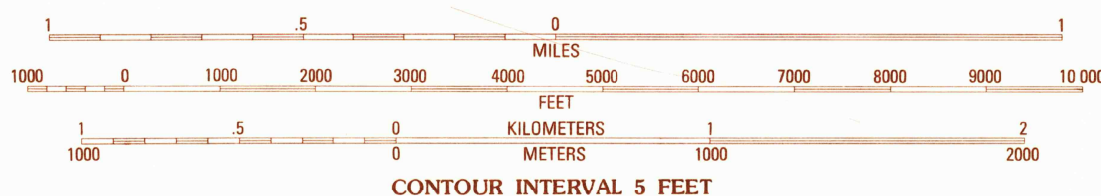
JONESVILLE SOUTH QUADRANGLE
LOUISIANA
7.5 MINUTE SERIES (TOPOGRAPHIC)



PRODUCED BY THE UNITED STATES GEOLOGICAL SURVEY
CONTROL BY USGS AND NOSNOAA
COMPILED FROM AERIAL PHOTOGRAPHS TAKEN 1977
FIELD CHECKED 1979. MAP EDITED 1983
PROJECTION LAMBERT CONFORMAL CONIC
GRID: 1000-METER UNIVERSAL TRANSVERSE MERCATOR ZONE 15
10,000-FOOT STATE GRID TICKS LOUISIANA, NORTH ZONE
UTM GRID DECLINATION 0°37' EAST
1983 MAGNETIC NORTH DECLINATION 4°30' EAST
VERTICAL DATUM NATIONAL GEODETIC VERTICAL DATUM OF 1929
HORIZONTAL DATUM 1927 NORTH AMERICAN DATUM
To place on the predicted North American Datum of 1983
move the projection lines as shown by dashed corner ticks
(15 meters south and 12 meters east)
There may be private inholdings within the boundaries of any
Federal and State reservations shown on this map
Gray tint indicates area in which selected buildings are shown

PROVISIONAL MAP
Produced from original
manuscript drawings. Informa-
tion shown as of date of
field check.

SCALE 1:24 000



CONTOUR INTERVAL 5 FEET

To convert feet to meters multiply by .3048
To convert meters to feet multiply by 3.2808

THIS MAP COMPLIES WITH NATIONAL MAP ACCURACY STANDARDS
FOR SALE BY U.S. GEOLOGICAL SURVEY, DENVER, COLORADO 80225 OR RESTON, VIRGINIA 22092
AND THE STATE OF LOUISIANA, DEPARTMENT OF PUBLIC WORKS, BATON ROUGE, LOUISIANA 70804



1	2	3	1 Manifest
			2 Jonesville North
			3 Dunbar
4		5	4 Walters
			5 Frogmore
			6 Larto Lake North
6	7	8	7 Mayna
			8 Monterey

ADJOINING 7.5 QUADRANGLE NAMES

ROAD LEGEND
Improved Road
Unimproved Road
Trail
Interstate Route U.S. Route State Route

JONESVILLE SOUTH, LOUISIANA
SE4 JONESVILLE 15' QUADRANGLE
PROVISIONAL EDITION 1983

31091-E7-TF-024

USGS AND HISTORICAL MAP
REC'D FILE COPY