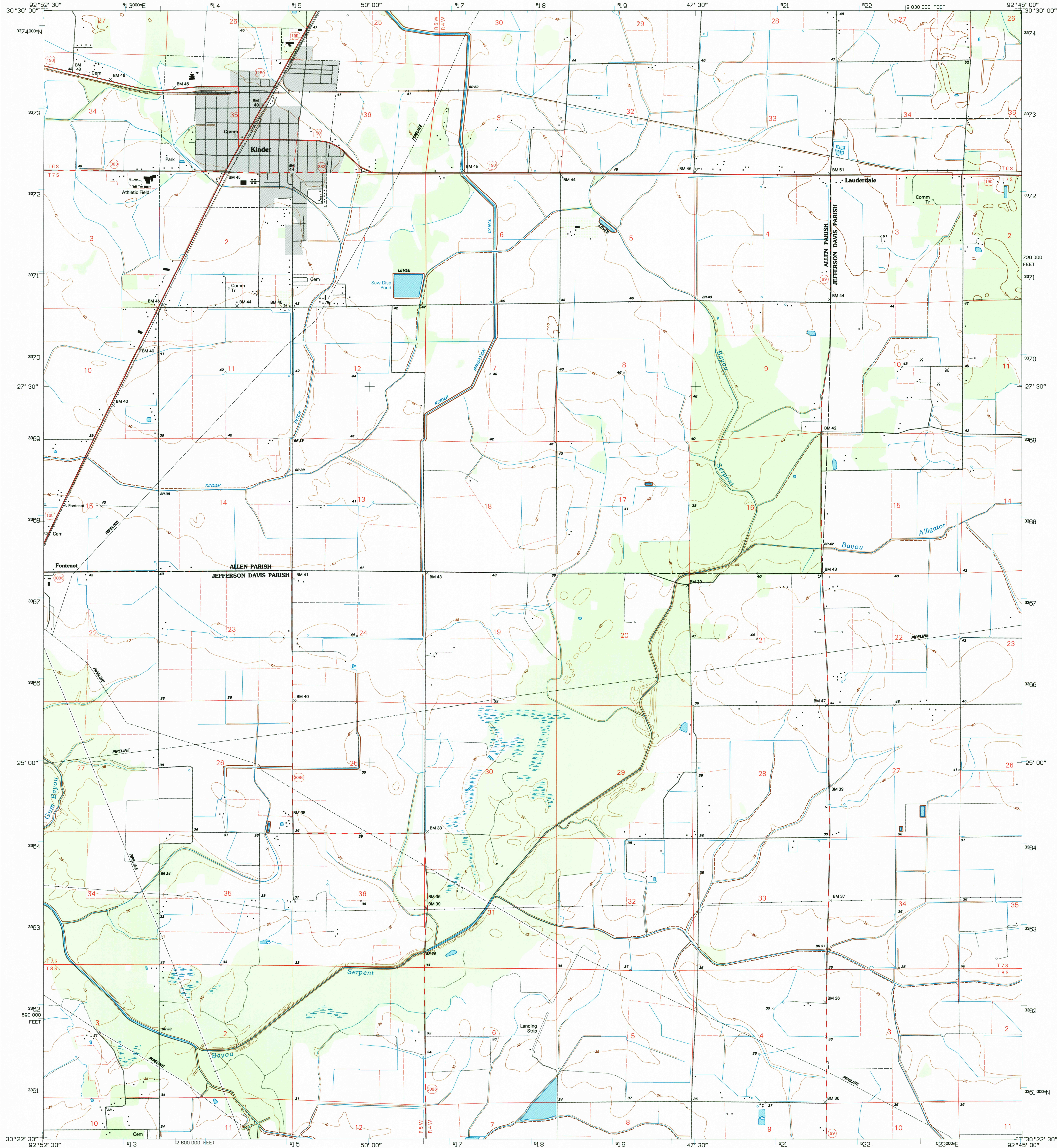


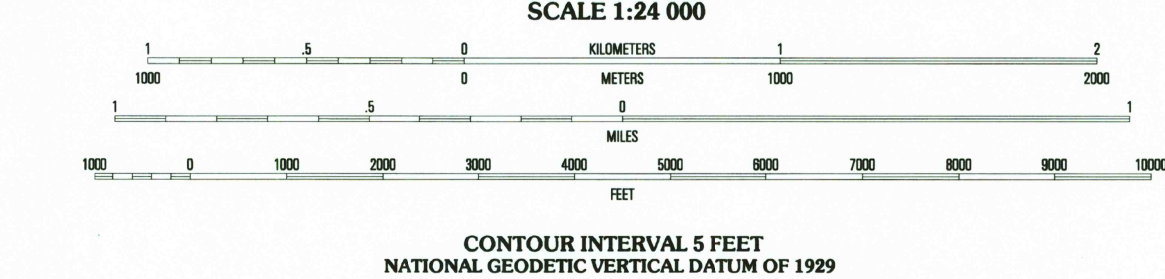
UNITED STATES  
DEPARTMENT OF THE INTERIOR  
GEOLOGICAL SURVEY

KINDER QUADRANGLE  
LOUISIANA  
7.5-MINUTE SERIES (TOPOGRAPHIC)

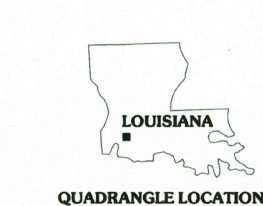


Produced by the United States Geological Survey  
in cooperation with State of Louisiana agencies  
Compiled by photogrammetric methods from imagery dated 1982  
Field checked 1983. Revised from imagery dated 1994  
PLSS and survey control current as of 1983. Map edited 1996  
Contours not revised  
North American Datum of 1983 (NAD 83). Projection and  
blue 1000-meter ticks: Universal Transverse Mercator, zone 15  
10 000-foot ticks: Louisiana Coordinate System of 1983 (south zone)  
North American Datum of 1927 (NAD 27) is shown by dashed  
corner ticks. The values of the shift between NAD 83 and NAD 27  
for 7.5-minute intersections are obtainable from National Geodetic  
Survey NADCON software

UTM GRID AND 1996 MAGNETIC NORTH  
DECLINATION AT CENTER OF SHEET



THIS MAP COMPLIES WITH NATIONAL MAP ACCURACY STANDARDS  
FOR SALE BY U.S. GEOLOGICAL SURVEY, DENVER, COLORADO 80225, OR RESTON, VIRGINIA 22092  
AND LOUISIANA DEPARTMENT OF TRANSPORTATION AND DEVELOPMENT, BATON ROUGE, LOUISIANA 70804  
A FOLDER DESCRIBING TOPOGRAPHIC MAPS AND SYMBOLS IS AVAILABLE ON REQUEST



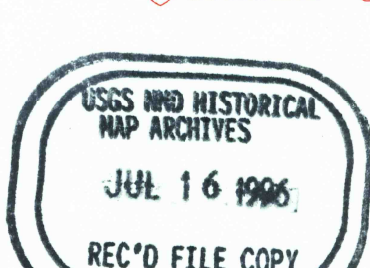
1	2	3
4	5	6
7	8	9

ADJOINING 7.5' QUADRANGLE NAMES

ROAD CLASSIFICATION

Primary highway	Light-duty road, hard or
hard surface .....	Improved surface .....
Secondary highway	Unimproved road .....
hard surface .....	

Interstate Route U.S. Route State Route



KINDER, LA  
30092-D7-TF-024  
1994

DMA 7444 IV NE-SERIES V885

