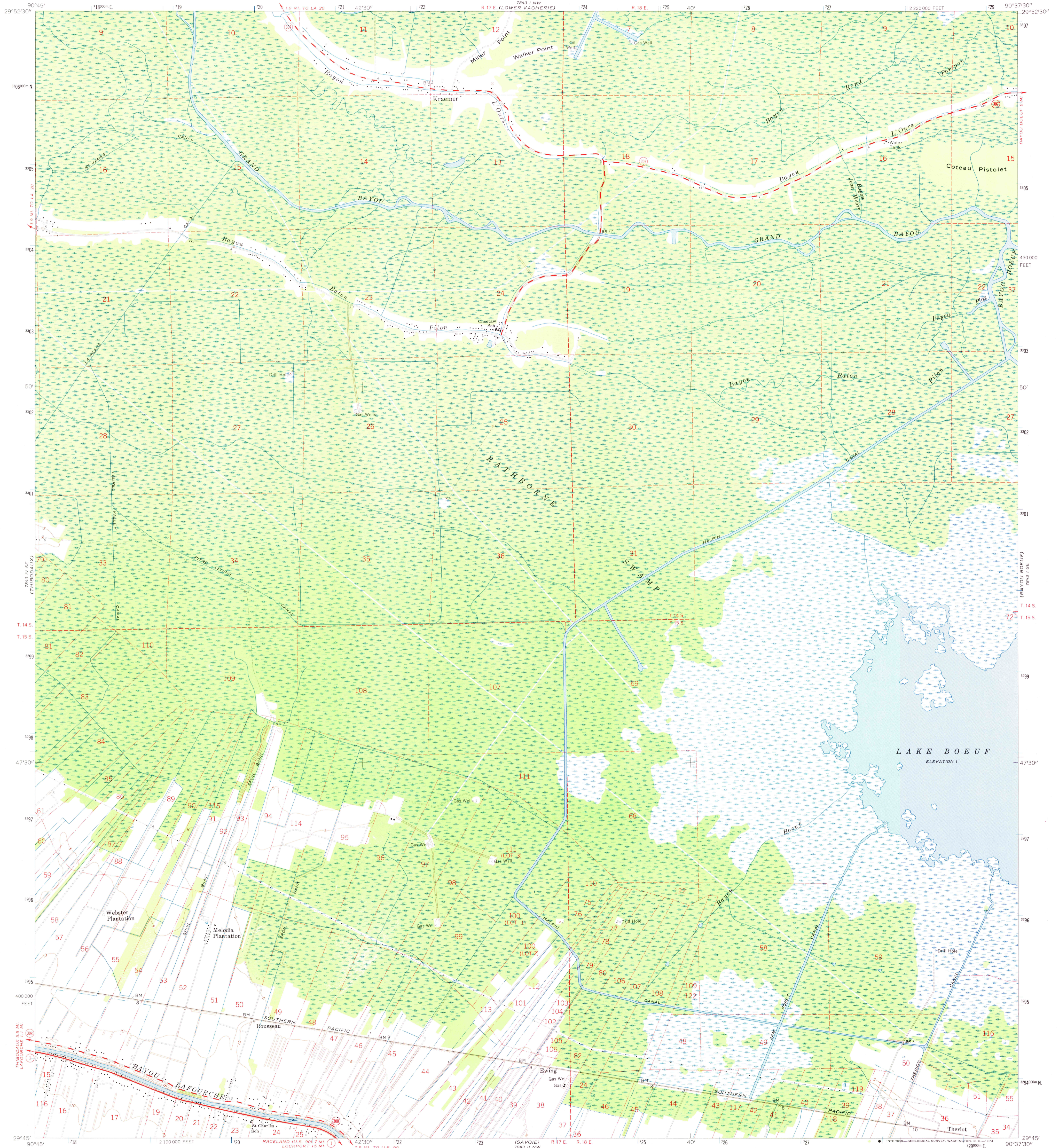


7843 I NE
(LACADY)

UNITED STATES
DEPARTMENT OF THE INTERIOR
GEOLOGICAL SURVEY

KRAEMER QUADRANGLE
LOUISIANA—LAFOURCHE PARISH
7.5 MINUTE SERIES (TOPOGRAPHIC)
SW 1/4 LAC DES ALLEMANDS 15' QUADRANGLE

7843 I NE
(LAC DES ALLEMANDS)



Mapped, edited, and published by the Geological Survey
Control by USGS and USC&GS
Planimetry by photogrammetric methods from aerial photographs
taken 1961. Topography by planetable surveys 1962
Polyconic projection. 1927 North American datum
10,000-foot grid based on Louisiana coordinate system, south zone
1000-meter Universal Transverse Mercator grid ticks,
zone 15, shown in blue
Where omitted, land lines have not been established
Fine red dashed lines indicate selected fence and field lines where
generally visible on aerial photographs. This information is unchecked

UTM GRID AND 1962 MAGNETIC NORTH
DECLINATION AT CENTER OF SHEET

THIS MAP COMPLIES WITH NATIONAL MAP ACCURACY STANDARDS
FOR SALE BY U.S. GEOLOGICAL SURVEY, DENVER, COLORADO 80225, OR WASHINGTON, D. C. 20242
AND BY THE STATE OF LOUISIANA, DEPARTMENT OF PUBLIC WORKS, BATON ROUGE, LOUISIANA 70804
A FOLDER DESCRIBING TOPOGRAPHIC MAPS AND SYMBOLS IS AVAILABLE ON REQUEST



HIS TOPOGRAPHIC
TOPOGRAPHIC DIVISION

ROAD CLASSIFICATION
Heavy-duty ——— Light-duty ———
Medium-duty - - - - - Unimproved dirt - - - - -
○ State Route

KRAEMER, LA.
SW 1/4 LAC DES ALLEMANDS 15' QUADRANGLE
N 2945—W 9037.5/7.5

FEB 22 1974

1962
AMS 7843 I SW—SERIES V885

2075