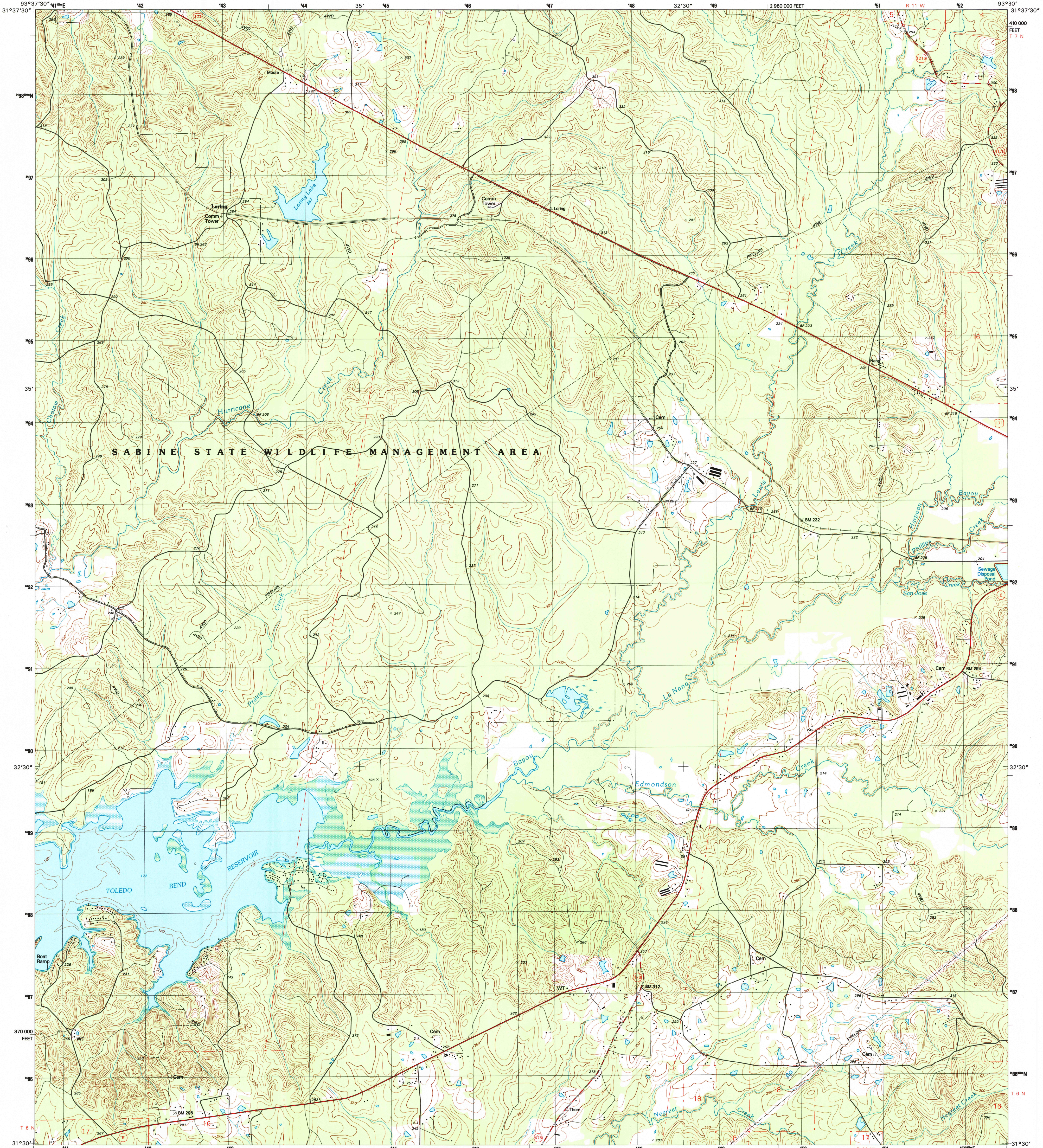


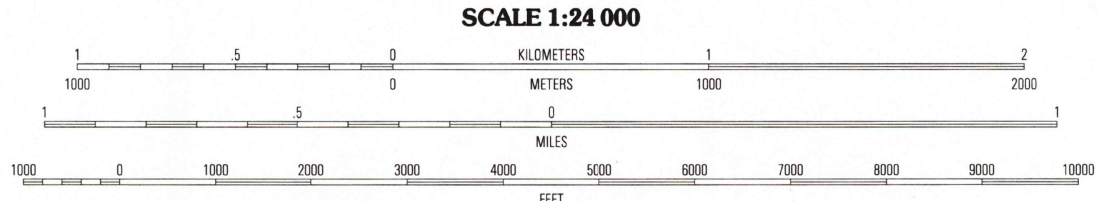
UNITED STATES  
DEPARTMENT OF THE INTERIOR  
GEOLOGICAL SURVEY

LORING QUADRANGLE  
LOUISIANA-SABINE PARISH  
7.5-MINUTE SERIES (TOPOGRAPHIC)



Produced by the United States Geological Survey  
in cooperation with State of Louisiana agencies  
Compiled by photogrammetric methods from imagery dated 1982  
Field checked 1985. Revised from imagery dated 1994  
PLSS and survey control current as of 1985. Map edited 1996  
Contours not revised. Contours that conflict with  
revised planimetry are dashed  
North American Datum of 1983 (NAD 83). Projection and  
1 000-meter grid: Universal Transverse Mercator, zone 15  
10 000-foot ticks: Louisiana Coordinate System of 1985 (north zone)  
North American Datum of 1927 (NAD 27) is shown by dashed  
corner ticks. The values of the shift between NAD 83 and NAD 27  
for 7.5-minute intersections are obtainable from National Geodetic  
Survey NADCON software  
There may be private inholdings within the boundaries of  
the National or State reservations shown on this map  
Area covered by dashed light-blue pattern  
is subject to controlled inundation

UTM GRID AND 1996 MAGNETIC NORTH  
DECLINATION AT CENTER OF SHEET



THIS MAP COMPLIES WITH NATIONAL MAP ACCURACY STANDARDS  
FOR SALE BY U.S. GEOLOGICAL SURVEY, DENVER, COLORADO 80225, OR RESTON, VIRGINIA 22092  
AND LOUISIANA DEPARTMENT OF TRANSPORTATION AND DEVELOPMENT, BATON ROUGE, LOUISIANA 70804  
A FOLDER DESCRIBING TOPOGRAPHIC MAPS AND SYMBOLS IS AVAILABLE ON REQUEST



QUADRANGLE LOCATION

1	2	3
4	5	6
7	8	

ADJOINING 7.5' QUADRANGLE NAMES

ROAD CLASSIFICATION

Primary highway  
hard surface .....  
Secondary highway  
hard surface .....  
Light-duty road, hard or  
improved surface .....  
Unimproved road .....

Interstate Route  
U.S. Route  
State Route

LOUISIANA  
JAN 3 1997  
REC'D FILE COPY

LORING, LA  
31093-E5-TF-024  
1994  
DMA 7247 II SE-SERIES V885

