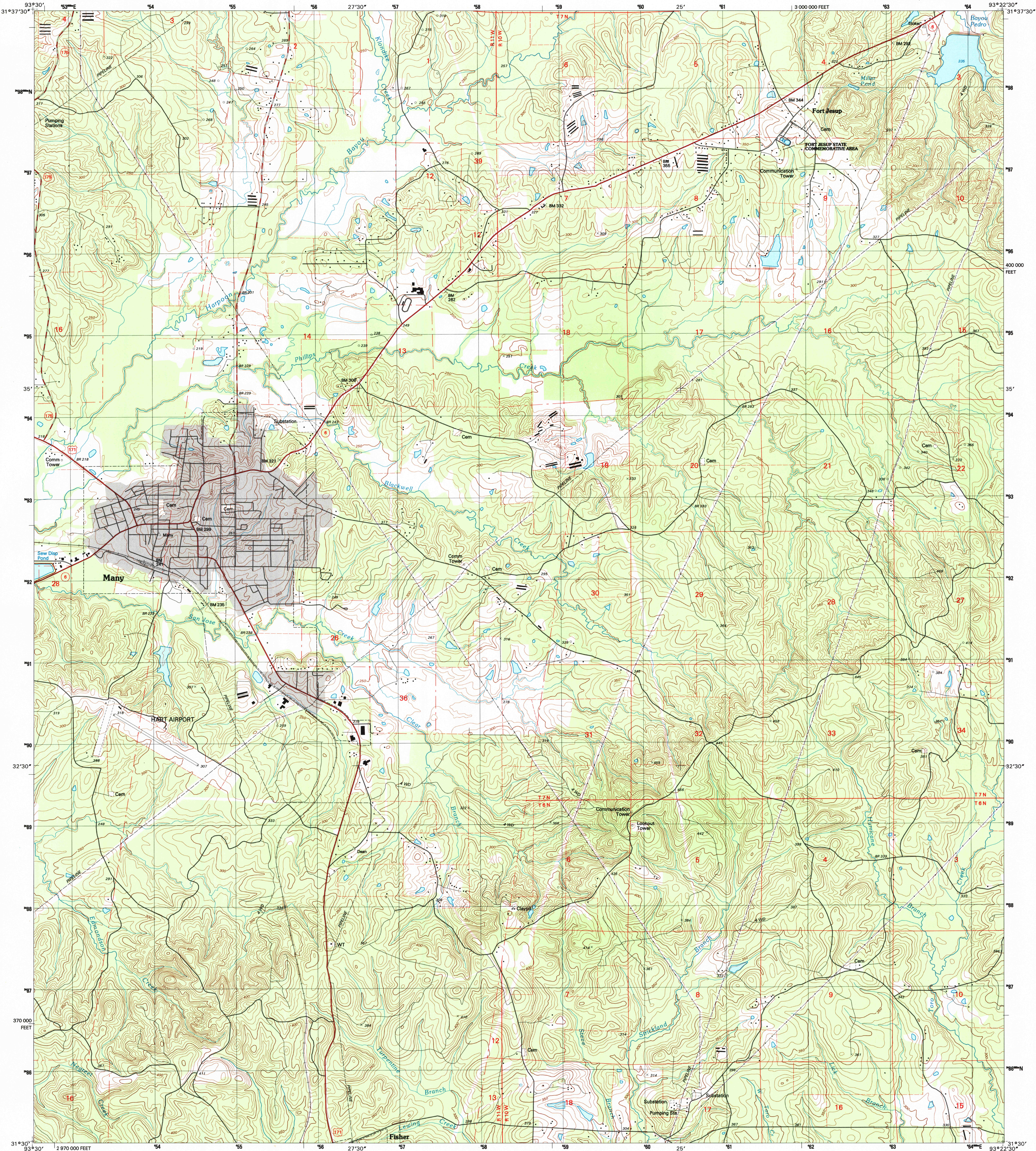


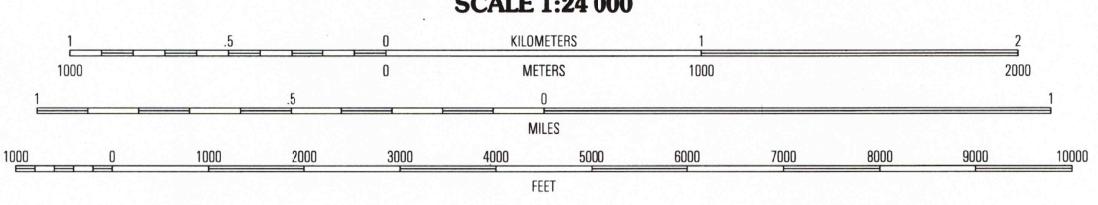
UNITED STATES
DEPARTMENT OF THE INTERIOR
GEOLOGICAL SURVEY

MANY QUADRANGLE
LOUISIANA-SABINE PARISH
7.5-MINUTE SERIES (TOPOGRAPHIC)



Produced by the United States Geological Survey
in cooperation with State of Louisiana agencies
Compiled by photogrammetric methods from imagery dated 1982
Field checked 1985. Revised from imagery dated 1994
PLSS and survey control current as of 1985. Map edited 1996
Contours not revised.
North American Datum of 1983 (NAD 83). Projection and
1 000-meter grid: Universal Transverse Mercator, zone 15
10 000-foot ticks: Louisiana Coordinate System of 1983 (north zone)
North American Datum of 1927 (NAD 27) is shown by dashed
corner ticks. The values of the shift between NAD 83 and NAD 27
for 7.5-minute intersections are obtainable from National Geodetic
Survey NADCON software
There may be private inholdings within the boundaries of
the National or State reservations shown on this map

UTM GRID AND 1996 MAGNETIC NORTH
DECLINATION AT CENTER OF SHEET



ROAD CLASSIFICATION

Primary highway hard surface	Light-duty road, hard or improved surface
Secondary highway hard surface	Unimproved road

Interstate Route U.S. Route State Route

QUADRANGLE LOCATION

1	2	3
4	5	6
7	8	9

1 Belmont
2 Marshville
3 Robeline
4 Loring
5 Vowells Mill
6 Nigmet
7 Florio
8 Person

ADJOINING 7.5' QUADRANGLE NAMES

MANY, LA
31093-E4-TF-024
1994
DMA 7347 III SW-SERIES V885