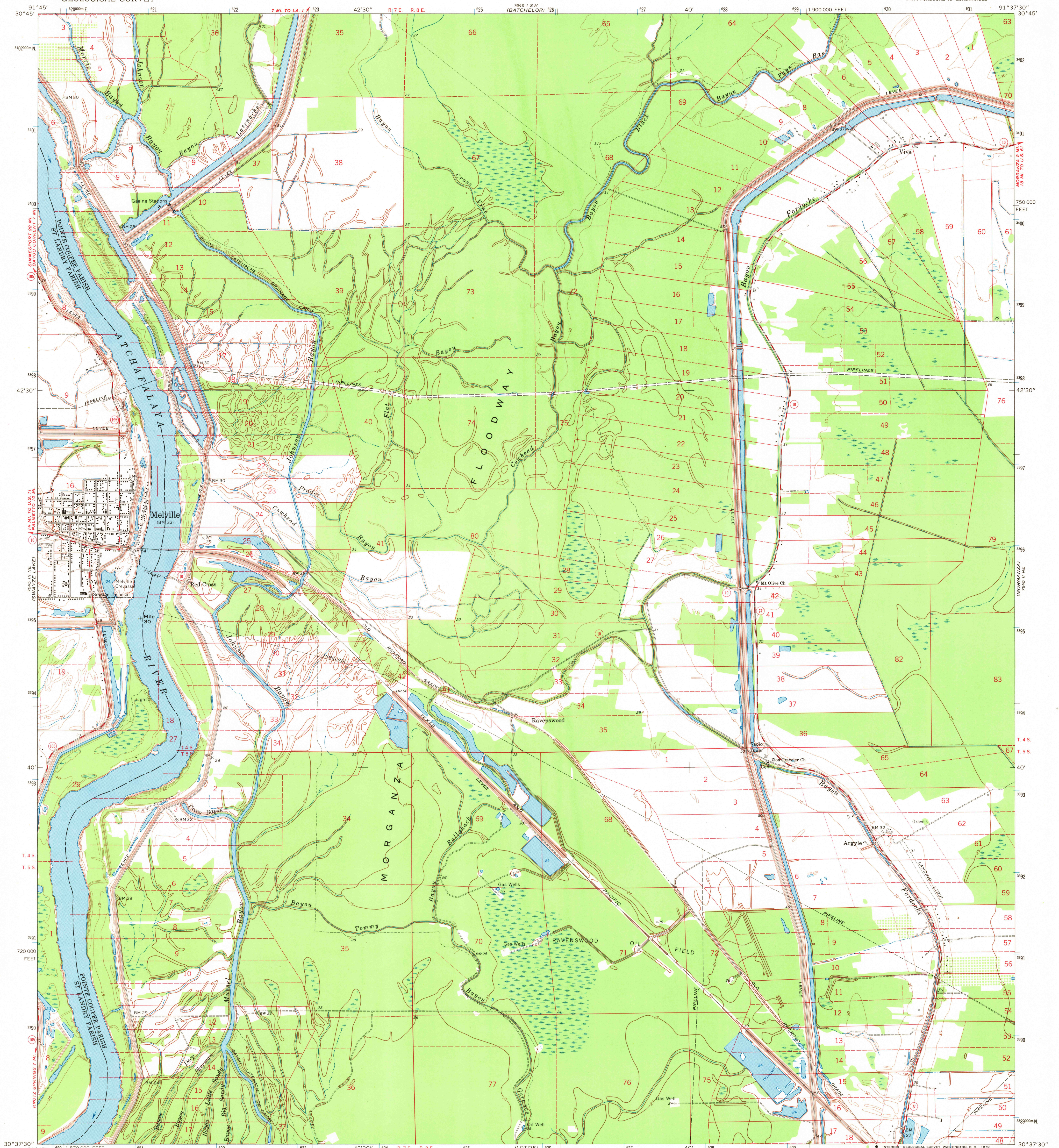


UNITED STATES
DEPARTMENT OF THE INTERIOR
GEOLOGICAL SURVEY

MELVILLE QUADRANGLE
LOUISIANA
7.5 MINUTE SERIES (TOPOGRAPHIC)
NW/4 FORDOCHE 15' QUADRANGLE



Mapped, edited, and published by the Geological Survey
Control by USGS, USC&GS, and USCE
Planimetry by photogrammetric methods from aerial photographs
taken 1966. Topography by planimetric surveys 1968
Polyconic projection. 1927 North American datum
10,000-foot grid based on Louisiana coordinate system, south zone
1000-meter Universal Transverse Mercator grid ticks,
zone 15, shown in blue
Fine red dashed lines indicate selected fence and field lines where
generally visible on aerial photographs. This information is unchecked

UTM GRID AND 1968 MAGNETIC NORTH
DECLINATION AT CENTER OF SHEET

SCALE 1:24,000
1 1000 2000 3000 4000 5000 6000 7000 FEET
1 KILOMETER
CONTOUR INTERVAL 5 FEET
DATUM IS MEAN SEA LEVEL

THIS MAP COMPLIES WITH NATIONAL MAP ACCURACY STANDARDS
FOR SALE BY U.S. GEOLOGICAL SURVEY, DENVER, COLORADO 80225, OR WASHINGTON, D.C. 20242
AND BY THE STATE OF LOUISIANA, DEPARTMENT OF PUBLIC WORKS, BATON ROUGE, LOUISIANA 70804
A FOLDER DESCRIBING TOPOGRAPHIC MAPS AND SYMBOLS IS AVAILABLE ON REQUEST

USGS
Historical File
Topographic Division



ROAD CLASSIFICATION
Medium-duty ——— Light-duty ———
Unimproved dirt ———
State Route ○

FILE COPY
TOPOGRAPHIC DIVISION

MELVILLE, LA.
NW/4 FORDOCHE 15' QUADRANGLE
N3037.5-W9137.5/7.5
1968

AMS 7645 11 NW-SERIES V885