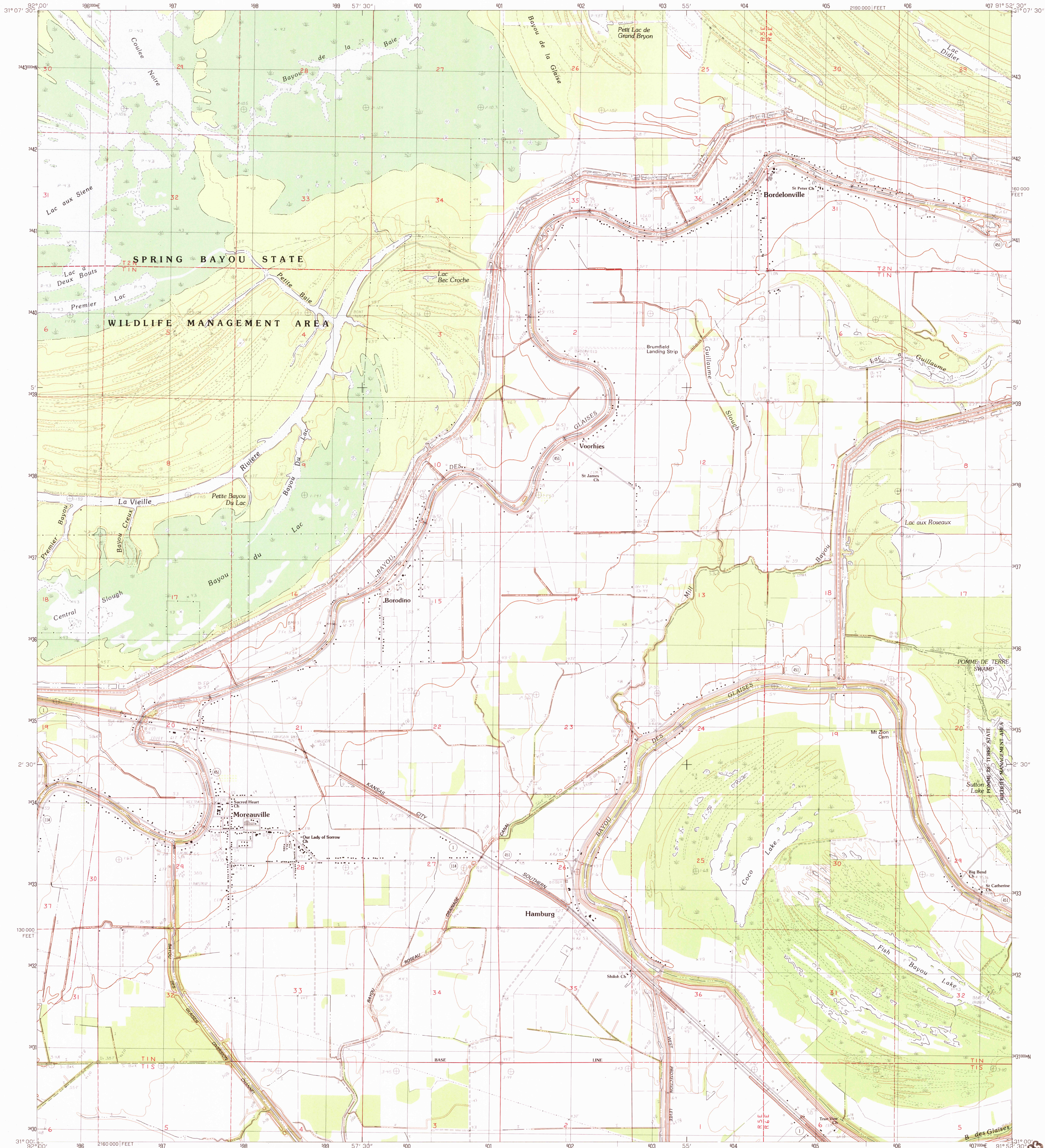


UNITED STATES
DEPARTMENT OF THE INTERIOR
GEOLOGICAL SURVEY

MOREAUVILLE QUADRANGLE
LOUISIANA-AVOYELLES PARISH
7.5 MINUTE SERIES (TOPOGRAPHIC)



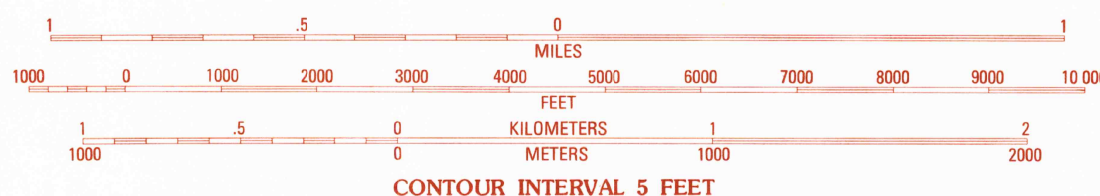
PRODUCED BY THE UNITED STATES GEOLOGICAL SURVEY
CONTROL BY: USGS AND NOS NOAA
COMPILED FROM AERIAL PHOTOGRAPHS TAKEN: 1975
FIELD CHECKED: 1977. MAP EDITED: 1982
PROJECTION: LAMBERT CONFORMAL CONIC
GRID: 1000-METER UNIVERSAL TRANSVERSE MERCATOR
ZONE 15
10,000-FOOT STATE GRID TICS: LOUISIANA, NORTH ZONE
UTM GRID DECLINATION: 0°33' EAST
1982 MAGNETIC NORTH DECLINATION: 4°30' EAST
VERTICAL DATUM: NATIONAL GEODETIC VERTICAL DATUM OF 1929
HORIZONTAL DATUM: 1927 NORTH AMERICAN DATUM
To place on the predicted North American Datum of 1983
move the projection lines as shown by dashed corner ticks
(16 meters south and 12 meters east)

There may be private inholdings within the boundaries of any
Federal and State reservations shown on this map

PROVISIONAL MAP
Produced from original
manuscript drawings. Infor-
mation shown as of date of
field check.

3

SCALE 1:24 000



TO convert feet to meters multiply by .3048
TO convert meters to feet multiply by 3.2808

THIS MAP COMPLIES WITH NATIONAL MAP ACCURACY STANDARDS
FOR SALE BY U. S. GEOLOGICAL SURVEY, DENVER, COLORADO 80225, OR RESTON, VIRGINIA 22092
AND THE STATE OF LOUISIANA, DEPARTMENT OF PUBLIC WORKS, BATON ROUGE, LOUISIANA 70804



1	2	3	1 Marksville North
			2 Lac Sainte Agne
4		5	3 Ile Natchitoches
			4 Marksville South
6	7	8	5 Big Bend
			6 Cottonport
			7 Plaquemine
			8 Simmesport

ADJOINING 3.5% QUADRANT NAMES

ADJOINING 7.5' QUADRANGLE NAMES

ROAD LEGEND

Improved Road
Unimproved Road
Trail
Interstate Route U.S. Route State Route

MOREAUVILLE, LOUISIANA
PROVISIONAL EDITION 1982

31091-A8-TF-024

MAP 2-1983