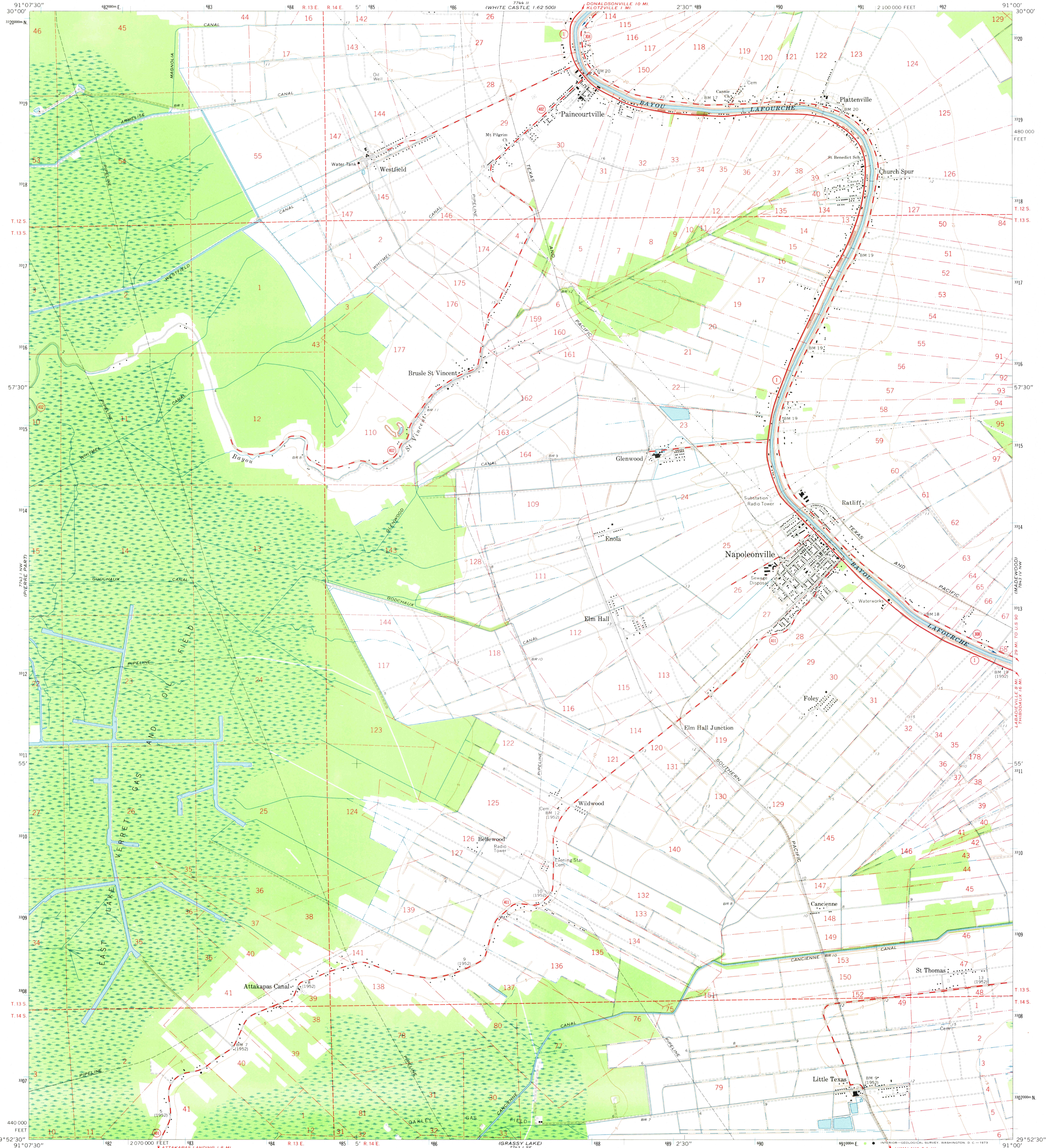


UNITED STATES
DEPARTMENT OF THE INTERIOR
GEOLOGICAL SURVEY

NAPOLEONVILLE QUADRANGLE
LOUISIANA—ASSUMPTION PARISH
7.5 MINUTE SERIES (TOPOGRAPHIC)
NE/4 NAPOLEONVILLE 15' QUADRANGLE

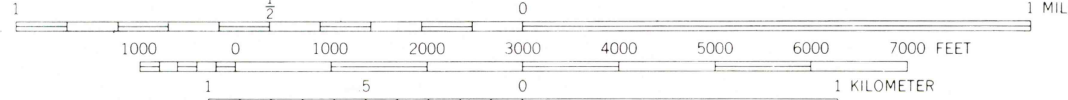
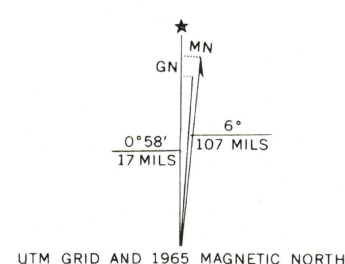


Maped, edited, and published by the Geological Survey
Control by USGS and USC&GS

Planimetry by photogrammetric methods from aerial photographs
taken 1963. Topography by planimetric surveys 1965

Polyconic projection. 1927 North American datum
10,000-foot grid based on Louisiana coordinate system, south zone
1000-meter Universal Transverse Mercator grid ticks,
zone 15, shown in blue

All or part of this quadrangle lies within a subsidence area
Bench marks have been adjusted to 1964 leveling unless
otherwise indicated by parenthetical dates



CONTOUR INTERVAL 5 FEET
DATUM IS MEAN SEA LEVEL

THIS MAP COMPLIES WITH NATIONAL MAP ACCURACY STANDARDS
FOR SALE BY U. S. GEOLOGICAL SURVEY, DENVER, COLORADO 80225, OR WASHINGTON, D. C. 20242
AND BY THE STATE OF LOUISIANA, DEPARTMENT OF PUBLIC WORKS, BATON ROUGE, LOUISIANA 70804
A FOLDER DESCRIBING TOPOGRAPHIC MAPS AND SYMBOLS IS AVAILABLE ON REQUEST

ROAD CLASSIFICATION
Heavy-duty ——— Light-duty ———
Medium-duty ——— Unimproved dirt ———
State Route



OCT 19 1973
NAPOLCONVILLE, LA.
NE/4 NAPOLCONVILLE 15' QUADRANGLE
N2952.5-W9100/7.5

1965
AMS 7743 I NE—SERIES V885