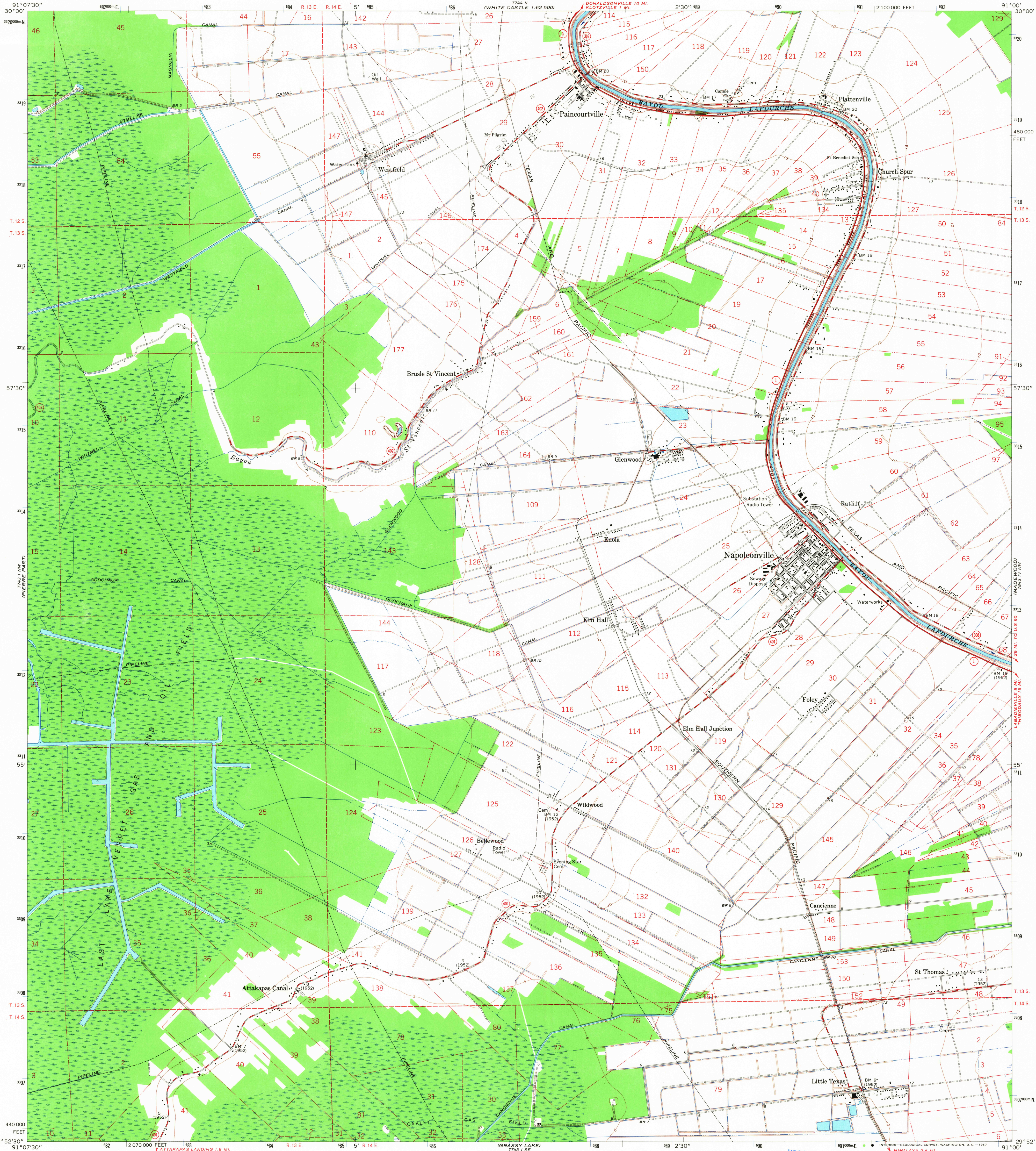
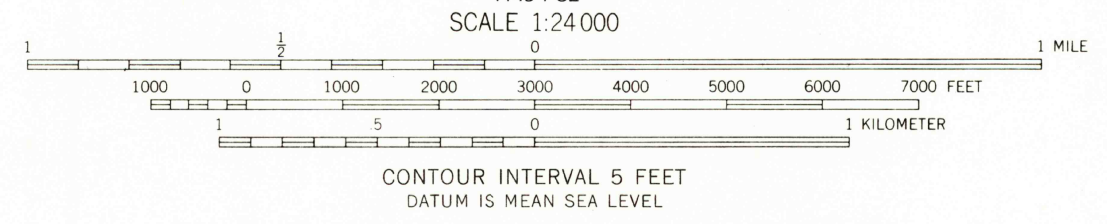
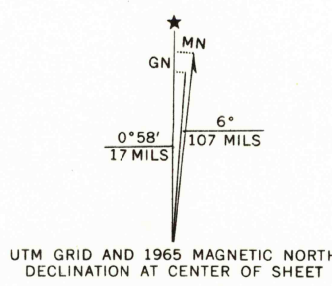


UNITED STATES
DEPARTMENT OF THE INTERIOR
GEOLOGICAL SURVEY

NAPOLEONVILLE QUADRANGLE
LOUISIANA—ASSUMPTION PARISH
7.5 MINUTE SERIES (TOPOGRAPHIC)
NE 1/4 NAPOLEONVILLE 15' QUADRANGLE



Mapped, edited, and published by the Geological Survey
Control by USGS and USC&GS
Panometry by photogrammetric methods from aerial photographs
taken 1963. Topography by planetable surveys 1965
Polyconic projection. 1927 North American datum
10,000-foot grid based on Louisiana coordinate system, south zone
1000-meter Universal Transverse Mercator grid ticks,
zone 15, shown in blue
All or part of this quadrangle lies within a subsidence area
Bench marks have been adjusted to 1964 leveling unless
otherwise indicated by parenthetical dates



USGS
Historical File
Topographic Division

ROAD CLASSIFICATION
Heavy-duty ——— Light-duty ———
Medium-duty ——— Unimproved dirt ———
State Route ———



U.S.G.S.
FILE COPY
TOPOGRAPHIC DIVISION

NAPOLEONVILLE, LA.
NE 1/4 NAPOLEONVILLE 15' QUADRANGLE
N2952.5—W9100/7.5

1965
AMS 7743 I NE—SERIES V885

APR 12 1967