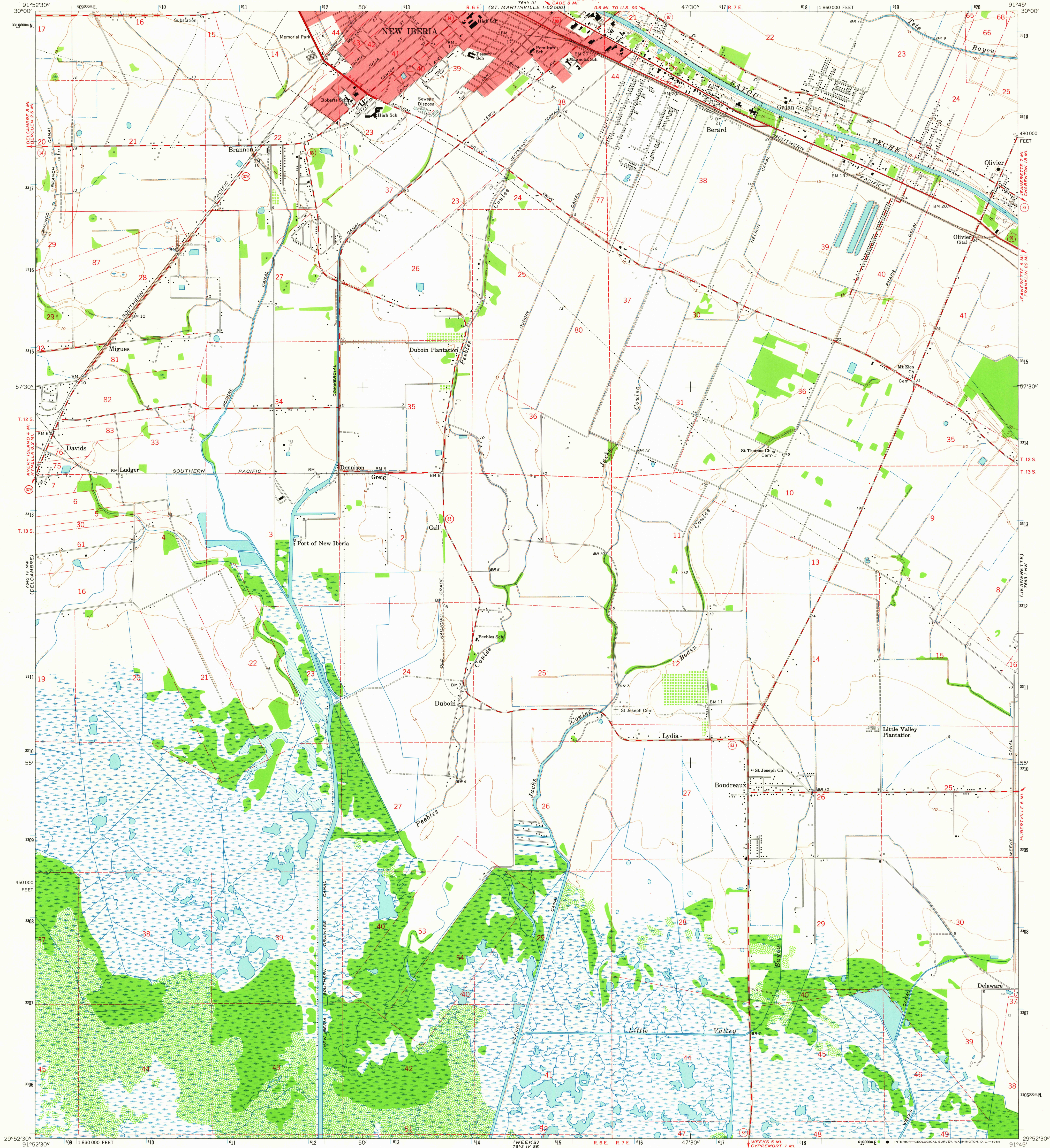


(ST. MARTINVILLE)
7643 IV NE
1:62,500

UNITED STATES
DEPARTMENT OF THE INTERIOR
GEOLOGICAL SURVEY

NEW IBERIA SOUTH QUADRANGLE
LOUISIANA—IBERIA PARISH
7.5 MINUTE SERIES (TOPOGRAPHIC)
NE 1/4 DEROUEN 15' QUADRANGLE

(LOREAUVILLE)
7643 IV NE
1:62,500



Mapped, edited, and published by the Geological Survey

Control by USGS, USC&GS, and Louisiana Geodetic Survey

Planimetry by photogrammetric methods from aerial photographs taken 1962. Topography by planimetric surveys 1963

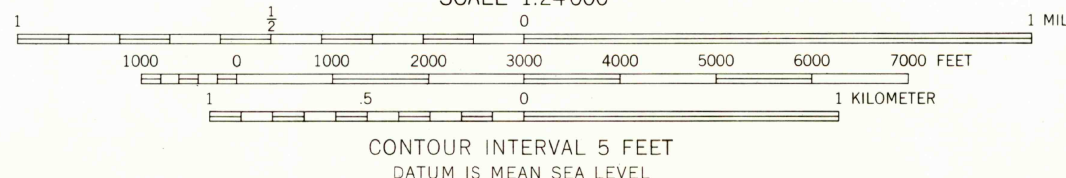
Polyconic projection. 1927 North American datum
10,000-foot grid based on Louisiana coordinate system, south zone
1000-meter Universal Transverse Mercator grid ticks,
zone 15, shown in blue

Red tint indicates area in which only landmark buildings are shown

Where omitted, land lines have not been established or
are not shown because of insufficient data

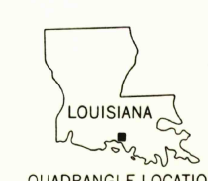
Fine red dashed lines indicate selected fence and field lines where
generally visible on aerial photographs. This information is unchecked

UTM GRID AND 1963 MAGNETIC NORTH
DECLINATION AT CENTER OF SHEET



THIS MAP COMPLIES WITH NATIONAL MAP ACCURACY STANDARDS
FOR SALE BY U.S. GEOLOGICAL SURVEY, DENVER 25, COLORADO OR WASHINGTON 25, D.C.
AND BY THE STATE OF LOUISIANA, DEPARTMENT OF PUBLIC WORKS, BATON ROUGE 4, LOUISIANA
A FOLDER DESCRIBING TOPOGRAPHIC MAPS AND SYMBOLS IS AVAILABLE ON REQUEST

USGS
Historical File
Topographic Division



U.S.G.S.
FILE COPY
TOPOGRAPHIC DIVISION

ROAD CLASSIFICATION
Heavy-duty ——— Light-duty ———
Medium-duty ——— Unimproved dirt ———
U.S. Route ——— State Route ———

NEW IBERIA SOUTH, LA.

NE 1/4 DEROUEN 15' QUADRANGLE
N2952.5—W9145.7.5

1963

AMS 7643 IV NE—SERIES V885

JUN 16 1964