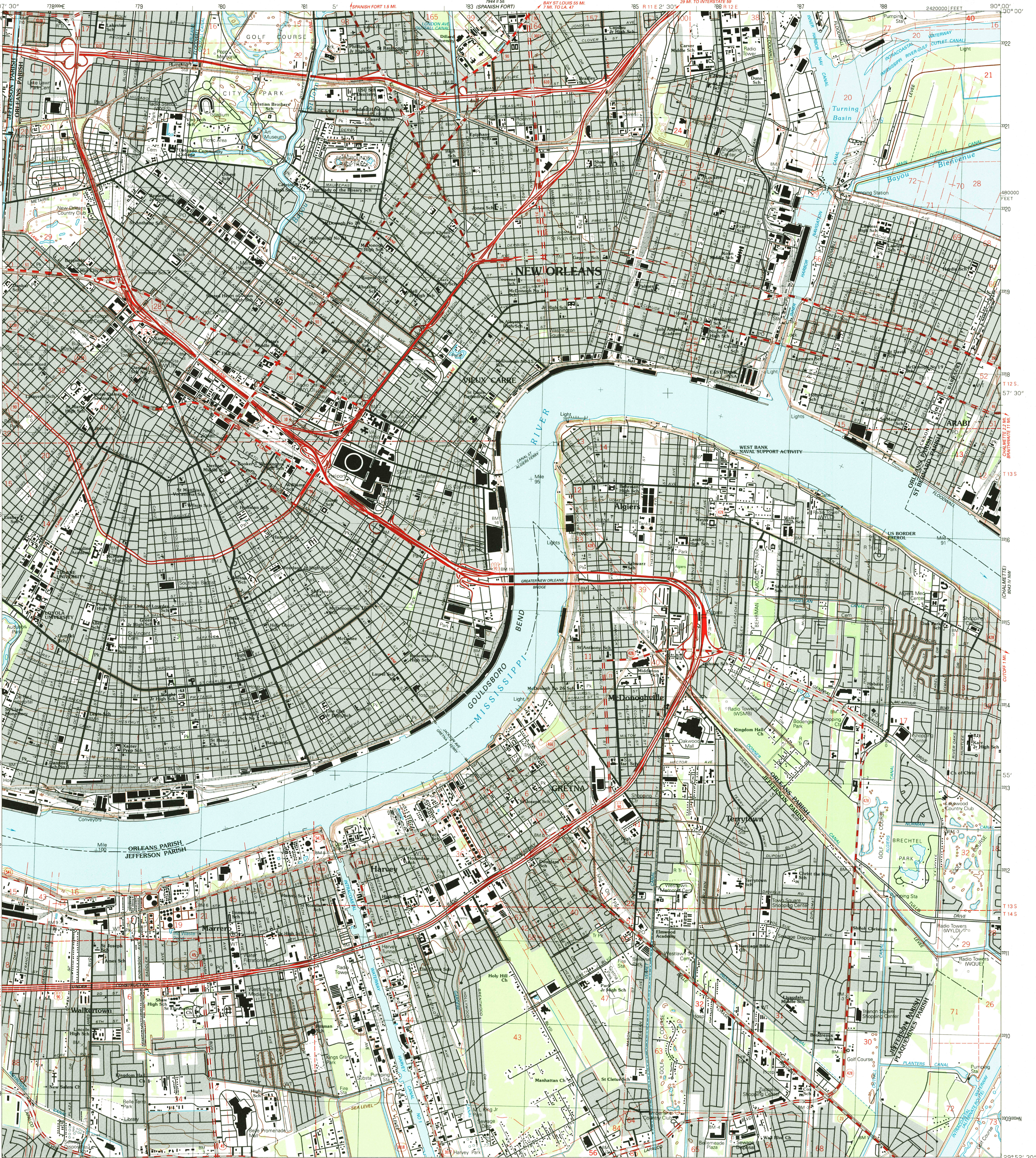
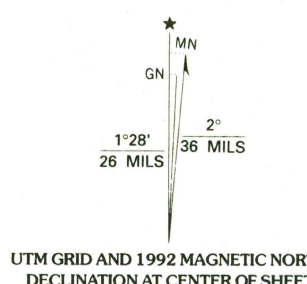


UNITED STATES  
DEPARTMENT OF THE INTERIOR  
GEOLOGICAL SURVEY

NEW ORLEANS EAST QUADRANGLE  
LOUISIANA  
7.5 MINUTE SERIES (TOPOGRAPHIC)  
NE/4 NEW ORLEANS 15 QUADRANGLE



Produced by the United States Geological Survey  
in cooperation with State of Louisiana agencies  
Control by USGS and NOS/NOAA  
Topography by photogrammetric methods from aerial photographs  
taken 1964 and planimetric surveys 1965-66. Revised from aerial  
photographs taken 1989. Field checked 1991. Map edited 1992  
Projection and 10,000-foot grid ticks: Louisiana coordinate  
system, south zone (Lambert conformal conic)  
1000-meter Universal Transverse Mercator grid, zone 15  
1927 North American Datum  
The difference between 1927 North American Datum and North  
American Datum of 1983 (NAD 83) for 7.5-minute intersections  
is given in USGS Bulletin 1875. The NAD 83 is shown by  
dashed corner ticks  
There may be private inholdings within the boundaries of  
the National or State reservations shown on this map  
Gray tint indicates areas in which only landmark buildings are shown  
All or part of this quadrangle lies within a subsidence area  
City of New Orleans and Orleans Parish are coextensive



SCALE 1:24 000  
KILOMETERS  
METERS  
MILES  
FOOT  
CONTOUR INTERVAL 5 FEET  
NATIONAL GEODETIC VERTICAL DATUM OF 1929  
THIS MAP COMPLIES WITH NATIONAL MAP ACCURACY STANDARDS  
FOR SALE BY U.S. GEOLOGICAL SURVEY, DENVER, COLORADO 80225, OR RESTON, VIRGINIA 22092  
AND LOUISIANA DEPARTMENT OF TRANSPORTATION AND DEVELOPMENT, BATON ROUGE, LOUISIANA 70804  
A FOLDER DESCRIBING TOPOGRAPHIC MAPS AND SYMBOLS IS AVAILABLE ON REQUEST

ROAD CLASSIFICATION  
Primary highway, hard surface  
Secondary highway, hard surface  
Interstate Route  
U. S. Route  
State Route  
Light-duty road, hard or improved surface  
Unimproved road

NEW ORLEANS EAST, LA.  
NE/4 NEW ORLEANS 15 QUADRANGLE  
29090H1-TF-024  
1992  
DMA 7943 1 NE-SERIES V885  
DEC 1 1995  
REC'D FILE COPY

NEW ORLEANS EAST, LA.  
NE/4 NEW ORLEANS 15 QUADRANGLE  
29090H1-TF-024  
1992  
DMA 7943 1 NE-SERIES V885  
ISBN 0-607-28652-0  
9 780607 228520