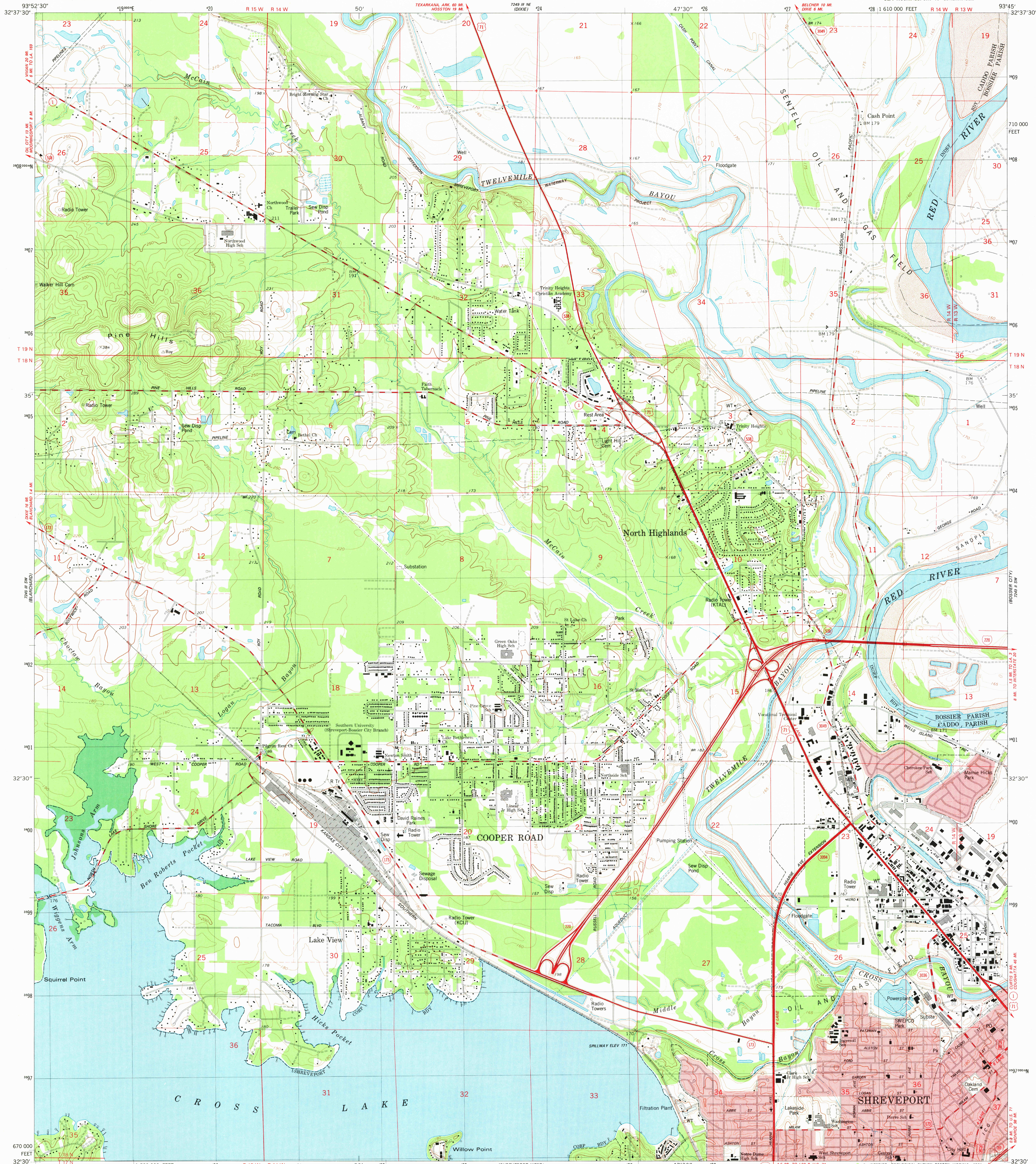


248 # NW
(MOORINGSPORT)

UNITED STATES
DEPARTMENT OF THE INTERIOR
GEOLOGICAL SURVEY

NORTH HIGHLANDS QUADRANGLE
LOUISIANA
7.5 MINUTE SERIES (TOPOGRAPHIC)

248 # NW
(MOORINGSPORT)



Mapped, edited, and published by the Geological Survey

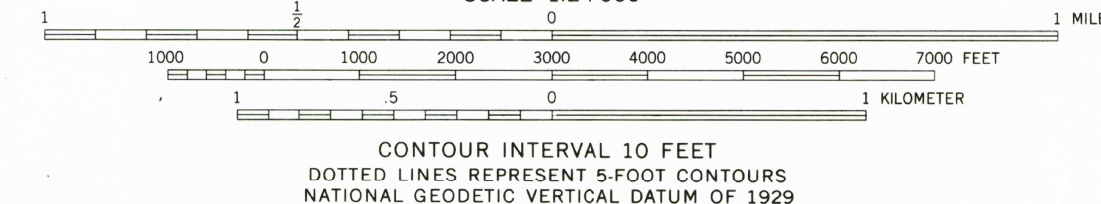
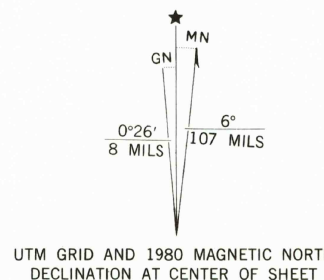
Control by USGS and NOS/NOAA

Planimetry by photogrammetric methods from aerial photographs taken 1954 and 1959. Topography by planetable surveys 1942-1943 and 1955. Revised from aerial photographs taken 1976. Field checked 1977. Map edited 1980.

Projection and 10,000-foot grid ticks: Louisiana coordinate system, north zone (Lambert conformal conic). 1000-meter Universal Transverse Mercator grid, zone 15 1927 North American Datum.

To place on the predicted North American Datum 1983 move the projection lines 12 meters south and 18 meters east as shown by dashed corner ticks.

Red tint indicates areas in which only landmark buildings are shown. Fine red dashed lines indicate selected fence and field lines where generally visible on aerial photographs. This information is unchecked.



THIS MAP COMPLIES WITH NATIONAL MAP ACCURACY STANDARDS
FOR SALE BY U. S. GEOLOGICAL SURVEY, DENVER, COLORADO 80225, OR RESTON, VIRGINIA 22092
AND STATE OF LOUISIANA, DEPARTMENT OF PUBLIC WORKS, BATON ROUGE, LOUISIANA 70804
A FOLDER DESCRIBING TOPOGRAPHIC MAPS AND SYMBOLS IS AVAILABLE ON REQUEST



Primary highway, hard surface
Secondary highway, hard surface
Light-duty road, hard or improved surface
Unimproved road
Interstate Route
U. S. Route
State Route

USGS
Historical File
Topographic Division

NORTH HIGHLANDS, LA.
SE/4 MOORINGSPORT 15' QUADRANGLE
N3230-W9345/7.5

1980

DMA 7249 III SE-SERIES V885

FEB 26 1981
2350