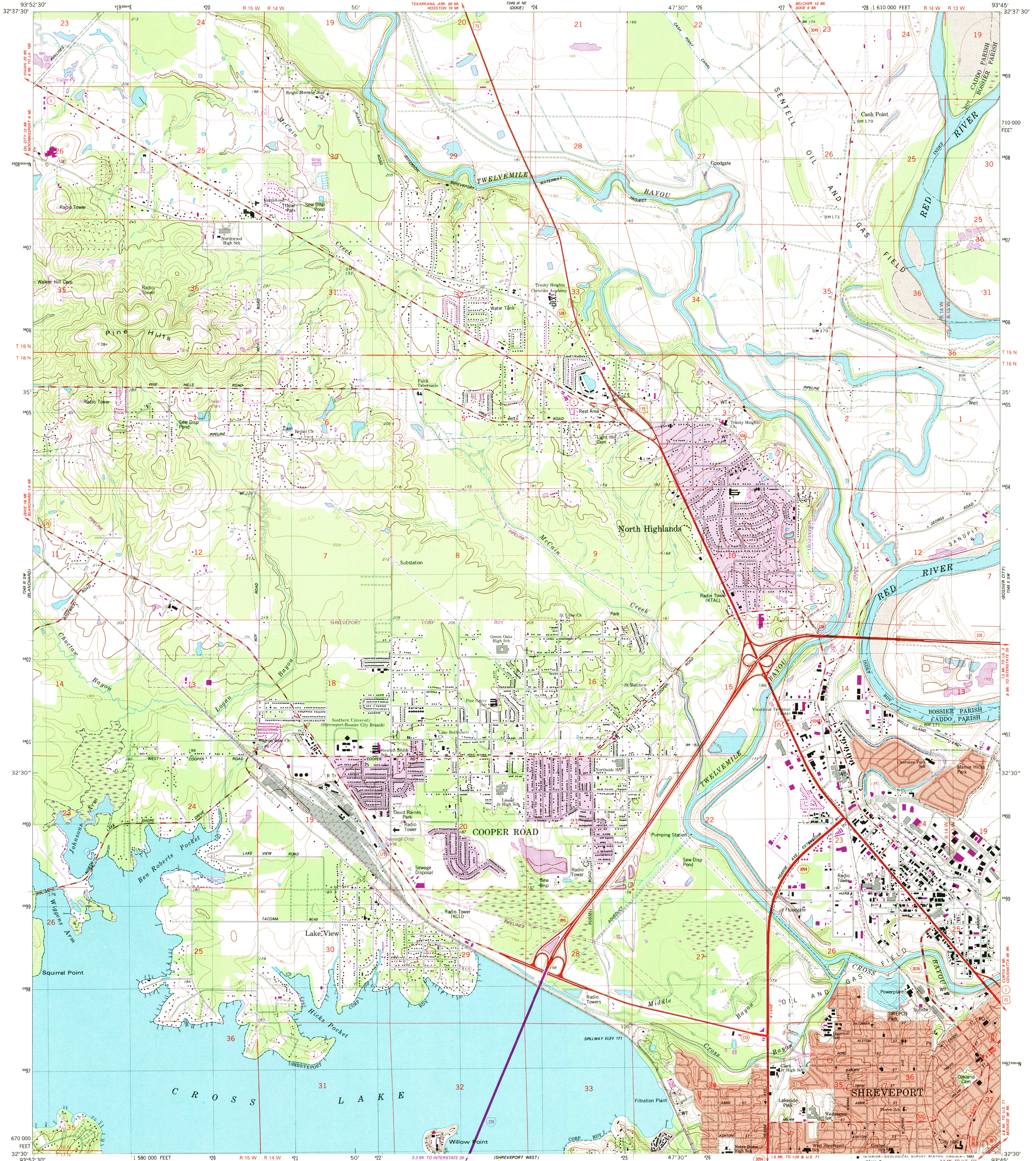


UNITED STATES
DEPARTMENT OF THE INTERIOR
GEOLOGICAL SURVEY

NORTH HIGHLANDS QUADRANGLE
LOUISIANA
7.5 MINUTE SERIES (TOPOGRAPHIC)
SE/4 MOORINGSPOINT 15' QUADRANGLE



Mapped, edited, and published by the Geological Survey

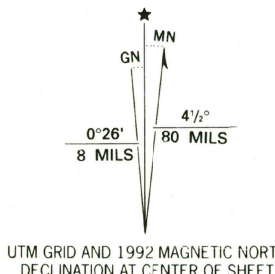
Control by USGS and NOS/NOAA

Planimetry by photogrammetric methods from aerial photographs taken 1954 and 1959. Topography by planetable surveys 1942-1943 and 1955. Revised from aerial photographs taken 1976. Field checked 1977. Map edited 1980.

Projection and 10,000-foot grid ticks: Louisiana coordinate system, north zone (Lambert conformal conic). 1000 meter Universal Transverse Mercator grid, zone 15. 1927 North American Datum. To place on the predicted North American Datum 1983 move the projection: lines 12 meters south and 18 meters east as shown by dashed corner ticks.

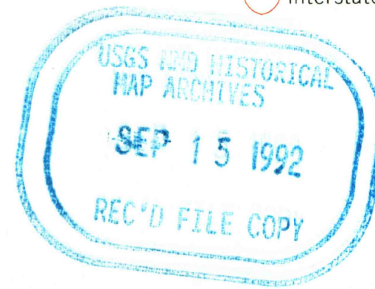
Red tint indicates areas in which only landmark buildings are shown. Fine red dashed lines indicate selected fence and field lines where generally visible on aerial photographs. This information is unchecked.

Revision shown in purple compiled in cooperation with State of Louisiana agencies from aerial photographs taken 1989 and other sources. Contours not revised. This information not field checked. Map edited 1992. Purple tint indicates extension of urban area.



SCALE 1:24 000
1 1000 0 1000 2000 3000 4000 5000 6000 7000 FEET
1 5 0 1 KILOMETER
CONTOUR INTERVAL 10 FEET
DOTTED LINES REPRESENT 5-FOOT CONTOURS
NATIONAL GEODETIC VERTICAL DATUM OF 1929

THIS MAP COMPLIES WITH NATIONAL MAP ACCURACY STANDARDS
FOR SALE BY U.S. GEOLOGICAL SURVEY, DENVER, COLORADO 80225, OR RESTON, VIRGINIA 22092
AND LOUISIANA DEPARTMENT OF TRANSPORTATION AND DEVELOPMENT, BATON ROUGE, LOUISIANA 70804
A FOLDER DESCRIBING TOPOGRAPHIC MAPS AND SYMBOLS IS AVAILABLE ON REQUEST



NORTH HIGHLANDS, LA.
SE/4 MOORINGSPOINT 15' QUADRANGLE
32093E7-TF-024

1980
REVISED 1992
DMA 7249 III SE-SERIES V885

ROAD CLASSIFICATION
Primary highway, hard surface
Secondary highway, hard surface
Unimproved road
Light duty road, hard or improved surface
Interstate Route
U.S. Route
State Route