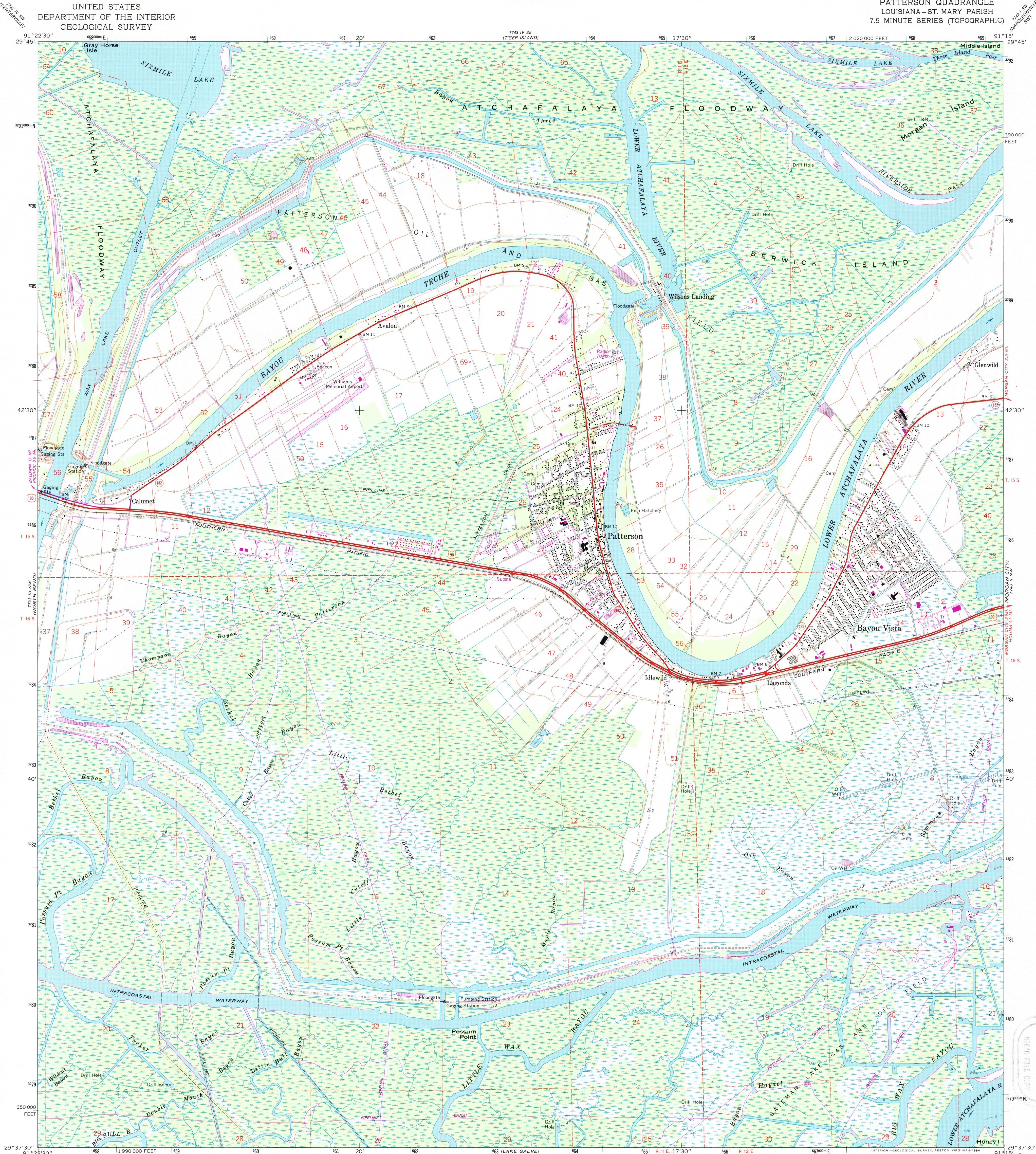


UNITED STATES
DEPARTMENT OF THE INTERIOR
GEOLOGICAL SURVEY

PATTERSON QUADRANGLE
LOUISIANA—ST. MARY PARISH
7.5 MINUTE SERIES (TOPOGRAPHIC)



Mapped, edited, and published by the Geological Survey

Control by USGS and USC&GS

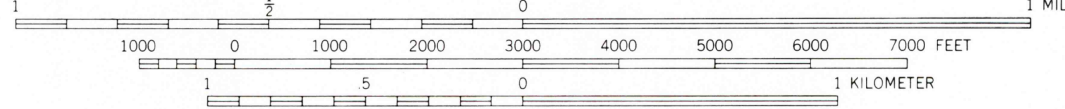
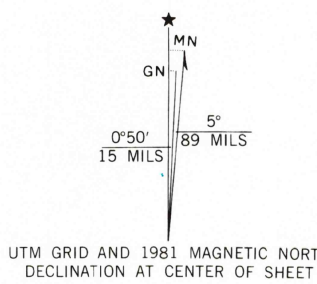
Planimetry by photogrammetric methods from aerial photographs taken 1964. Topography by planetable surveys 1966

Selected hydrographic data compiled from USC&GS Charts 880 (1966) and 1276 (1965). This information is not intended for navigational purposes

Polyconic projection. 1927 North American datum
10,000-foot grid based on Louisiana coordinate system, south zone
1000-meter Universal Transverse Mercator grid ticks, zone 15, shown in blue

All or part of this quadrangle lies within a subsidence area

Dotted land lines established by private survey
To place on the predicted North American Datum 1983
move the projection lines 19 meters south and
11 meters east as shown by dashed corner ticks



CONTOUR INTERVAL 5 FEET
NATIONAL GEODETIC VERTICAL DATUM OF 1929
DEPTH CURVES AND SOUNDINGS IN FEET—GULF COAST LOW WATER DATUM
THE RELATIONSHIP BETWEEN THE TWO DATUMS IS VARIABLE
SHORELINE SHOWN REPRESENTS THE APPROXIMATE LINE OF MEAN HIGH WATER
THE MEAN RANGE OF TIDE IS APPROXIMATELY 1/4 FOOT

THIS MAP COMPLIES WITH NATIONAL MAP ACCURACY STANDARDS
FOR SALE BY U. S. GEOLOGICAL SURVEY, DENVER, COLORADO 80225, OR RESTON, VIRGINIA, 22092
AND STATE OF LOUISIANA, DEPARTMENT OF PUBLIC WORKS, BATON ROUGE, LOUISIANA 70804
A FOLDER DESCRIBING TOPOGRAPHIC MAPS AND SYMBOLS IS AVAILABLE ON REQUEST



Revisions shown in purple and woodland compiled
from aerial photographs taken 1978. Map edited 1981
This information not field checked

ROAD CLASSIFICATION
Heavy-duty ——— Light-duty ———
Medium-duty ——— Unimproved dirt ———
U.S. Route ——— State Route ———

PATTERSON, LA.

N2937.5—W9115/7.5

1966
PHOTOREVISED 1981
DMA 7743 III NE—SERIES V885

U.S. GEOLOGICAL SURVEY
NOV 26 1996
REC'D FILE COPY

