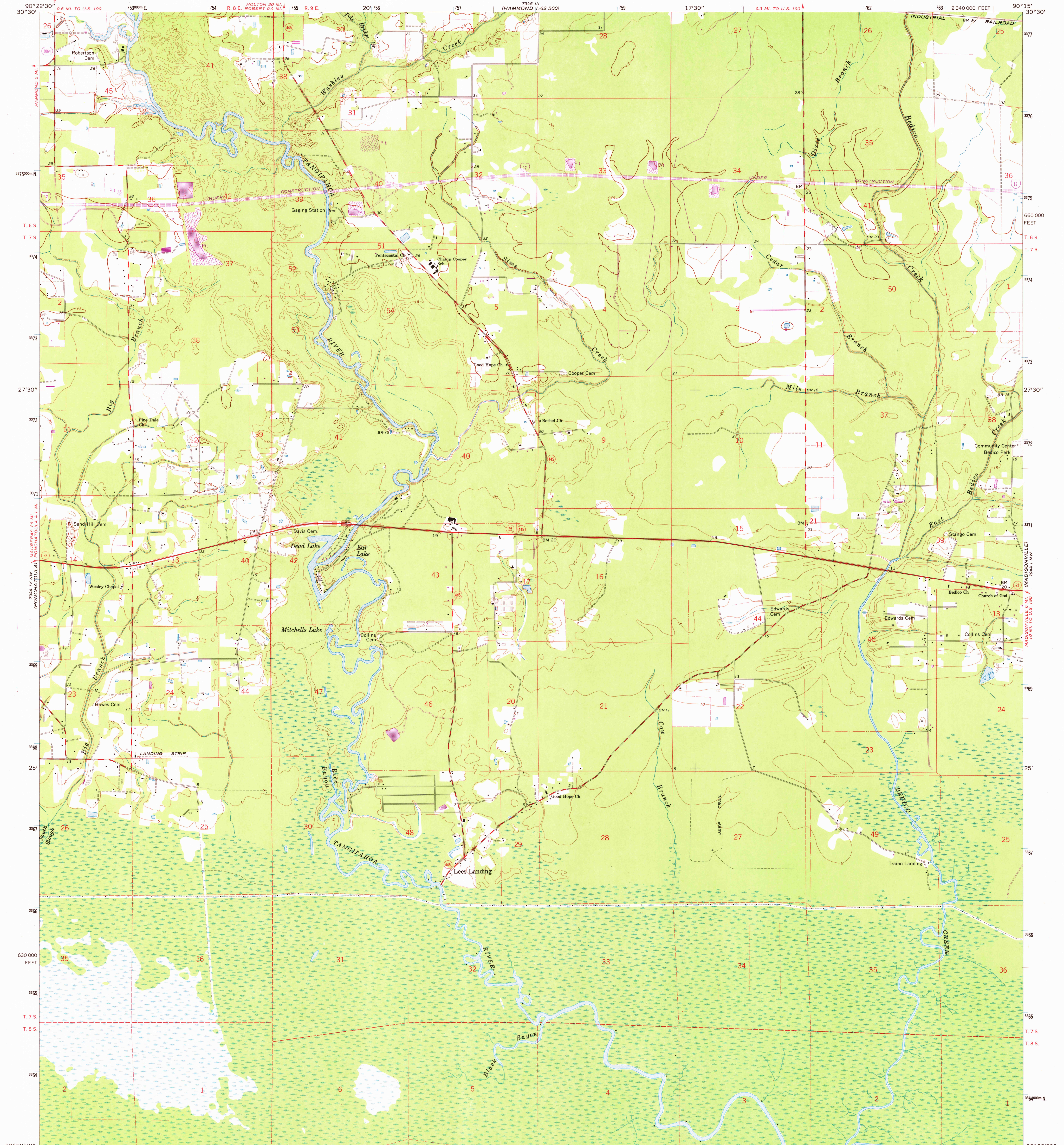


UNITED STATES
DEPARTMENT OF THE INTERIOR
GEOLOGICAL SURVEY

PONCHATOULA NE QUADRANGLE
LOUISIANA—TANGIPAHOA PARISH
7.5 MINUTE SERIES (TOPOGRAPHIC)
NE/4 PONCHATOULA 15' QUADRANGLE



Mapped, edited, and published by the Geological Survey

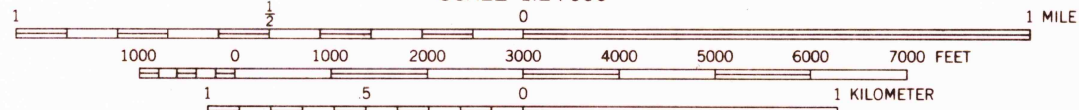
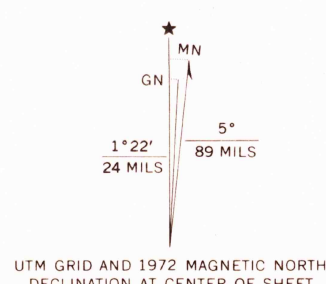
Control by USGS and USC&GS

Topography by photogrammetric methods from aerial photographs taken 1965 and planetable surveys 1968

Polyconic projection. 1927 North American datum
10,000-foot grid based on Louisiana coordinate system, south zone
1000-meter Universal Transverse Mercator grid ticks, zone 15, shown in blue

Fine red dashed lines indicate selected fence and field lines where generally visible on aerial photographs. This information is unchecked

Revisions shown in purple compiled from aerial photographs taken 1972. This information not field checked



CONTOUR INTERVAL 5 FEET
DATUM IS MEAN SEA LEVEL

THIS MAP COMPLIES WITH NATIONAL MAP ACCURACY STANDARDS
FOR SALE BY U.S. GEOLOGICAL SURVEY, DENVER, COLORADO 80225, OR WASHINGTON, D.C. 20242
AND BY THE STATE OF LOUISIANA, DEPARTMENT OF PUBLIC WORKS, BATON ROUGE, LOUISIANA 70804
A FOLDER DESCRIBING TOPOGRAPHIC MAPS AND SYMBOLS IS AVAILABLE ON REQUEST

ROAD CLASSIFICATION
Heavy-duty ——— Light-duty ———
Medium-duty ——— Unimproved dirt ———
Interstate Route ——— State Route ———



USGS
Historical File
Topographic Division

PONCHATOULA NE, LA.
NE/4 PONCHATOULA 15' QUADRANGLE
N3022.5—W9015/7.5

1968
PHOTOREVISED 1972
AMS 7944 IV NE—SERIES 9885

NOV 21 1973