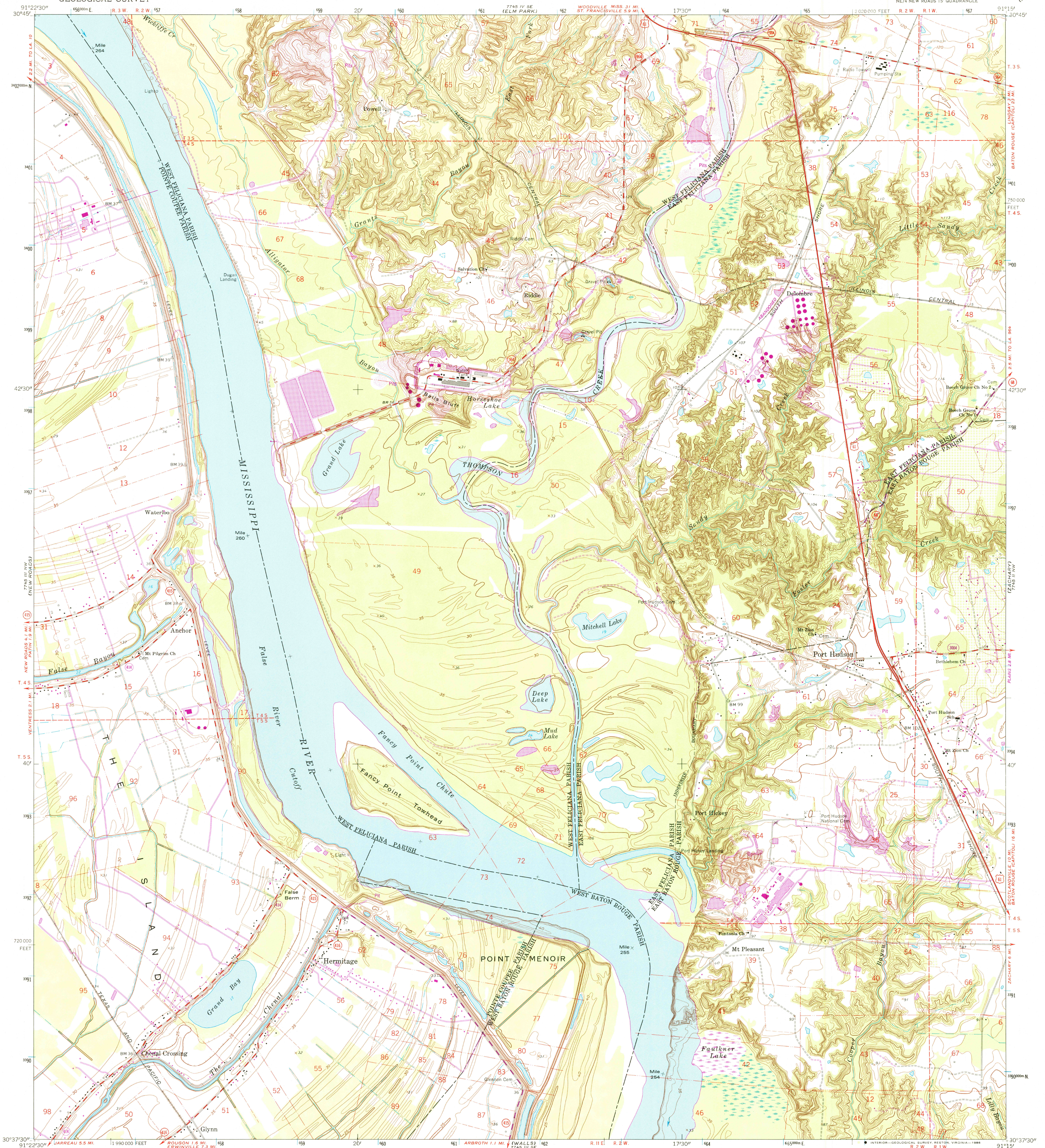


UNITED STATES
DEPARTMENT OF THE INTERIOR
GEOLOGICAL SURVEY

PORT HUDSON QUADRANGLE
LOUISIANA
7.5 MINUTE SERIES (TOPOGRAPHIC)
NE 1/4 NEW ROADS 15' QUADRANGLE



Mapped, edited, and published by the Geological Survey

Control by USGS, USC&GS, and USCE

Planimetry by photogrammetric methods from aerial photographs taken 1952. Topography by planetable surveys 1953-54. Revised 1963

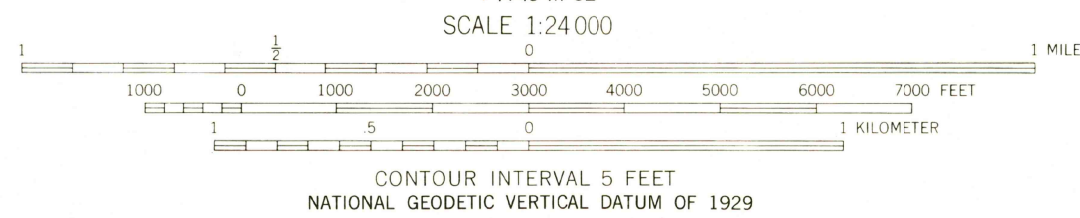
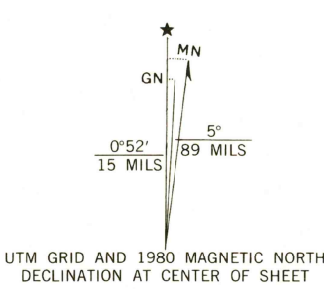
Polyconic projection. 1927 North American datum 10,000-foot grid based on Louisiana coordinate system, south zone 1000-meter Universal Transverse Mercator grid ticks, zone 15, shown in blue

Fine red dashed lines indicate selected fences and field lines where generally visible on aerial photographs. This information is unchecked

To place on the predicted North American Datum 1983 move the projection lines 17 meters south and 11 meters east as shown by dashed corner ticks

Revisions shown in purple and woodland compiled from aerial photographs taken 1978. Map edited 1980

This information not field checked



THIS MAP COMPLIES WITH NATIONAL MAP ACCURACY STANDARDS
FOR SALE BY U. S. GEOLOGICAL SURVEY, DENVER, COLORADO 80225, OR RESTON, VIRGINIA 22092
AND STATE OF LOUISIANA, DEPARTMENT OF PUBLIC WORKS, BATON ROUGE, LOUISIANA 70804
A FOLDER DESCRIBING TOPOGRAPHIC MAPS AND SYMBOLS IS AVAILABLE ON REQUEST



USGS NMD HISTORICAL MAP
APR 21 1986
REC'D FILE COPY

ROAD CLASSIFICATION
Heavy-duty ——— Light-duty ———
Medium-duty ——— Unimproved dirt ———
U. S. Route ——— State Route ———

PORT HUDSON, LA.
NE 1/4 NEW ROADS 15' QUADRANGLE
30091-F3-7F-024

1963
PHOTOREVISED 1980
DMA 7745 III NE—SERIES V885