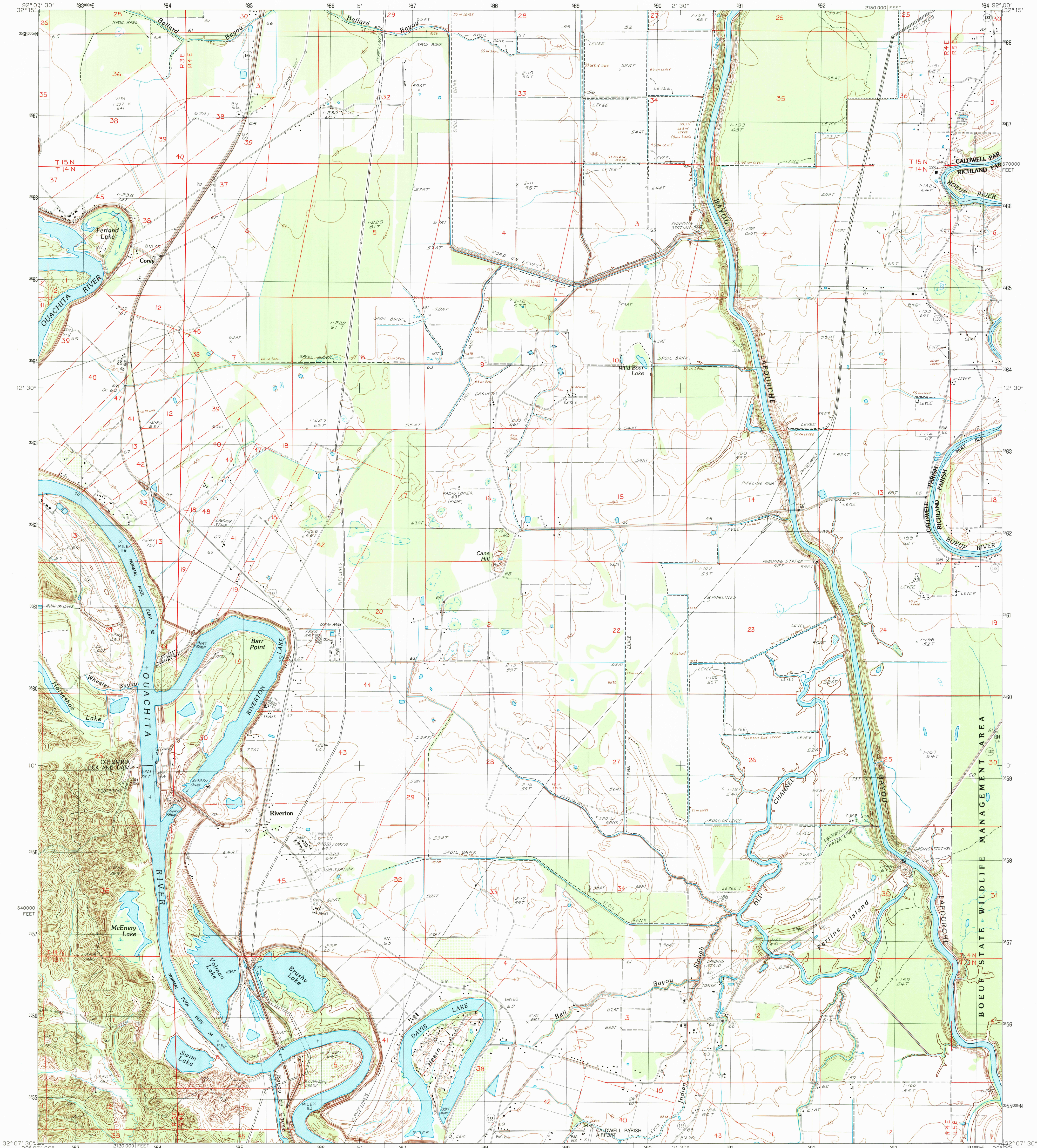


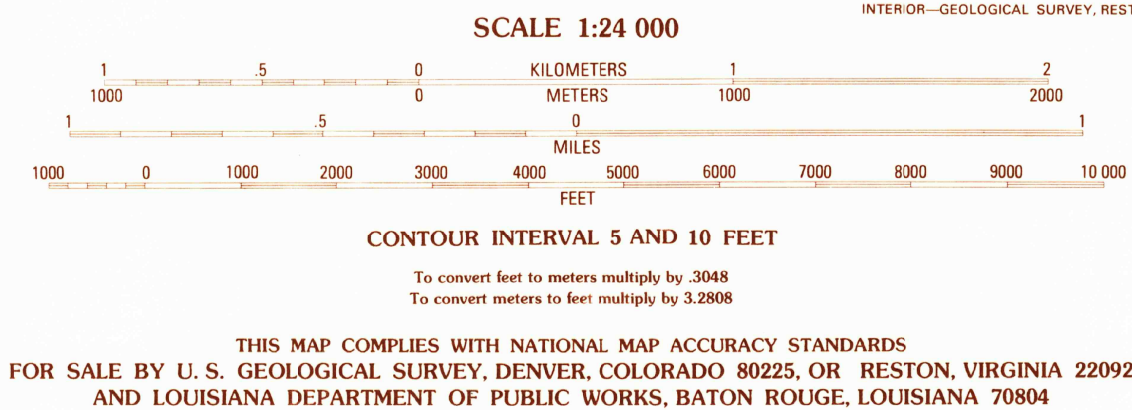
UNITED STATES
DEPARTMENT OF THE INTERIOR
GEOLOGICAL SURVEY

RIVERTON QUADRANGLE
LOUISIANA
7.5 MINUTE SERIES (TOPOGRAPHIC)



PRODUCED BY THE UNITED STATES GEOLOGICAL SURVEY
CONTROL BY USGS AND NOS/NOAA
COMPILED FROM AERIAL PHOTOGRAPHS TAKEN 1983-84
FIELD CHECKED 1986 MAP EDITED 1988
PROJECTION LAMBERT CONFORMAL CONIC
GRID: 1000-METER UNIVERSAL TRANSVERSE MERCATOR
ZONE 15
10,000-FOOT STATE GRID TICKS LOUISIANA, NORTH ZONE
UTM GRID DECLINATION 030° EAST
1989 MAGNETIC NORTH DECLINATION 390° EAST
VERTICAL DATUM NATIONAL GEODETIC VERTICAL DATUM OF 1929
HORIZONTAL DATUM 1927 NORTH AMERICAN DATUM
To place on the predicted North American Datum of 1983,
move the projection lines as shown by dashed corner ticks
(13 meters south and 13 meters east)
There may be private inholdings within the boundaries of any
Federal or State reservations shown on this map
No distinction made between houses, barns, and other buildings

PROVISIONAL MAP
Produced from original
manuscript drawings. Information
shown as of date of
photography.



RECD FILE COPY
SEP 26 1989
USGS NMU HISTORICAL MAP