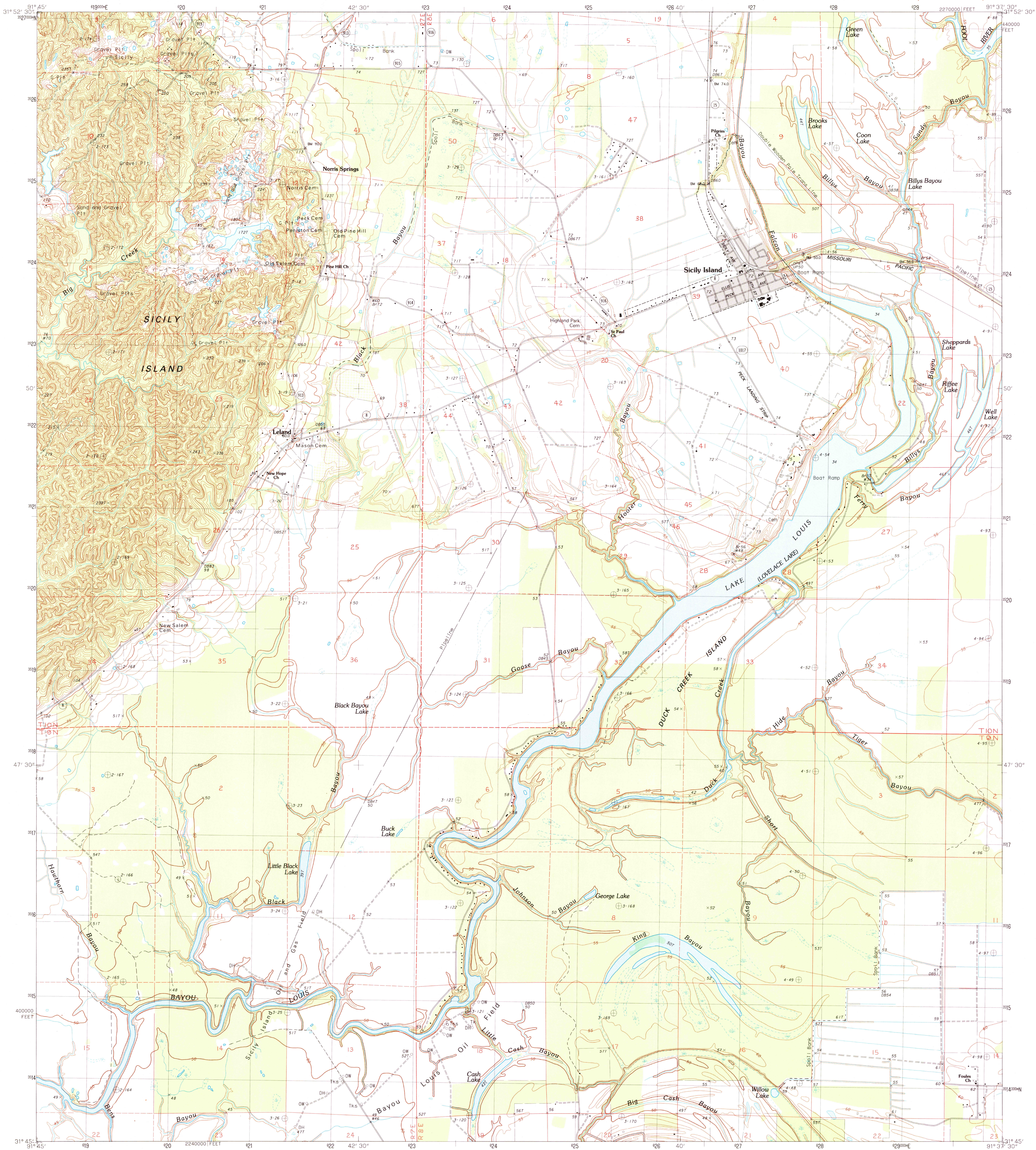


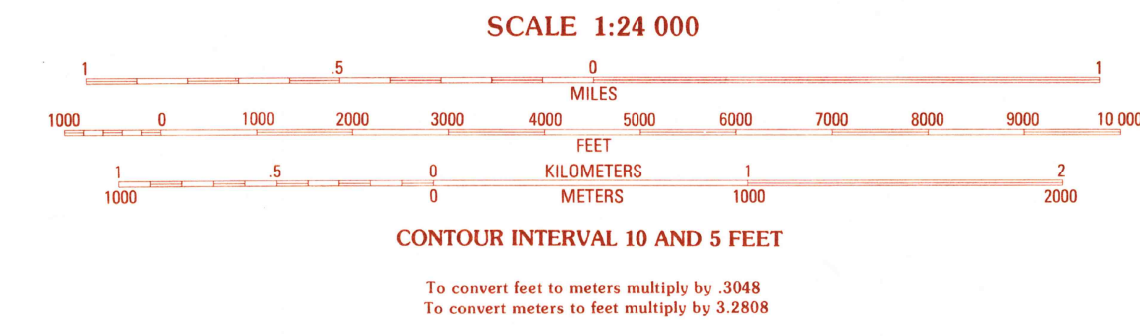
UNITED STATES
DEPARTMENT OF THE INTERIOR
GEOLOGICAL SURVEY

SICILY ISLAND QUADRANGLE
LOUISIANA-CATAHOULA PARISH
7.5 MINUTE SERIES (TOPOGRAPHIC)

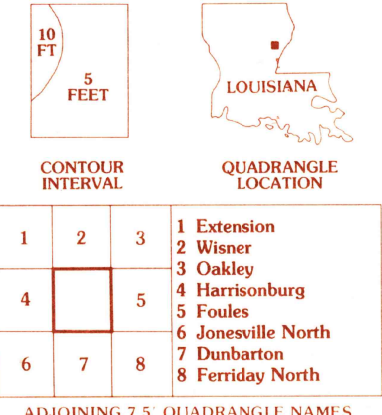


PRODUCED BY THE UNITED STATES GEOLOGICAL SURVEY
CONTROL BY USGS AND NOS-NOAA
COMPILED FROM AERIAL PHOTOGRAPHS TAKEN 1977
FIELD CHECKED 1979. MAP EDITED 1983
PROJECTION LAMBERT CONFORMAL CONIC
GRID: 1000-METER UNIVERSAL TRANSVERSE MERCATOR ZONE 15
10,000-FOOT STATE GRID TICS LOUISIANA, NORTH ZONE
UTM GRID DECLINATION 042° EAST
1983 MAGNETIC NORTH DECLINATION 4°30' EAST
VERTICAL DATUM NATIONAL GEODETIC VERTICAL DATUM OF 1929
HORIZONTAL DATUM 1927 NORTH AMERICAN DATUM
To place on the predicted North American Datum of 1983,
move the projection lines as shown by dashed corner ticks
(14 meters south and 12 meters east)
There may be private inholdings within the boundaries of any
Federal and State reservations shown on this map
Gray tint indicates area in which selected buildings are shown

PROVISIONAL MAP
Produced from original
manuscript drawings. Informa-
tion shown as of date of
field check.



THIS MAP COMPLIES WITH NATIONAL MAP ACCURACY STANDARDS
FOR SALE BY U.S. GEOLOGICAL SURVEY, DENVER, COLORADO 80225, OR RESTON, VIRGINIA 22092
AND THE STATE OF LOUISIANA, DEPARTMENT OF PUBLIC WORKS, BATON ROUGE, LOUISIANA 70804



ROAD LEGEND
Improved Road
Unimproved Road
Trail
Interstate Route U.S. Route State Route
SICILY ISLAND, LOUISIANA
SW4 SICILY ISLAND 15' QUADRANGLE
PROVISIONAL EDITION 1983
31091-G6-TF-024

